

EMSA Applications Exchange SSN System Interface Guide

Document version: 1.15

Document release date: 06/02/2019

SSN XSD version: 4.02

SSN XSD release date: 06/02/2019

Reference document of the IFCD defined in Annex III, paragraph 2.3 of Directive 2002/59/EC as amended by Directive 2009/17/EC establishing a community vessel traffic monitoring and Information system

Subject		
SSN System Interface Guide[1.15]		
Writer	Sign off and Date	Deadline for Comments
Intrasoft Intl	06/02/2019	

RECIPIENTS		
Name	Organization	Sign-off
Oscar RODRIGUEZ	EMSA	

Change Control History			
VERSION	DATE	AUTHOR	DESCRIPTION
1.10	12/01/2018	Intrasoft Intl.	Applicable to SSN version 4.0 release
1.11	06/02/2018	Intrasoft Intl.	EMSA comments incorporated
1.12	27/03/2018	Intrasoft Intl.	Further clarification onnotification attribute OriginatorID.
1.13	26/04/2018	Intrasoft Intl.	ES namespace reverted to eu.emsa.ssn.voyage – REST enrichment messages reverted to SSN2SEG
1.14	08/11/2018	Intrasoft Intl.	artf55980, artf54309
1.15	06/02/2019	Intrasoft Intl.	Updated sections 3.2.3.3, 3.2.4.1, 3.2.4.2 to depict updated SSN2ES_ShipCall_Res.xml message according to SSN_THETIS_draft (artf57114).

TABLE OF CONTENTS

1	INTRODUCTION.....	4
1.1	PURPOSE	4
1.2	SCOPE	4
1.3	REFERENCE AND APPLICABLE DOCUMENTS.....	4
1.4	ABBREVIATIONS AND ACRONYMS	5
2	SYSTEM INTERFACES	6
2.1	SERVICES OVERVIEW	6
2.2	DATA PROVIDER INTERFACE.....	7
2.2.1	<i>Send IncidentDetail notifications</i>	<i>7</i>
2.3	DATA REQUESTOR INTERFACE	7
2.3.1	<i>Get PortPlus Notification details.....</i>	<i>7</i>
2.3.2	<i>Get Ship (MRS) Notification details.....</i>	<i>7</i>
2.3.3	<i>Get IncidentReport Notification details</i>	<i>8</i>
2.3.4	<i>Get Vessel Enrichment and Exemption data.....</i>	<i>8</i>
3	DATAEXCHANGE MESSAGES	9
3.1	SEND INCIDENTDETAIL NOTIFICATIONS.....	9
3.1.1	<i>Introduction</i>	<i>9</i>
3.1.2	<i>Message Flow</i>	<i>9</i>
3.1.3	<i>ES2SSN_IncidentDetail_Not.xml message</i>	<i>10</i>
3.1.4	<i>ES2SSN_IncidentDetail_Not.xmlbusiness rules.....</i>	<i>17</i>
3.1.5	<i>ES2SSN_IncidentDetail_Not.xml example message(s).....</i>	<i>29</i>
3.1.6	<i>SSN2ES_IncidentDetail_Tx_Ack.xml message.....</i>	<i>30</i>
3.1.7	<i>SSN2ES_IncidentDetail_Tx_Ack.xml business rules.....</i>	<i>31</i>
3.1.8	<i>SSN2ES_IncidentDetail_Tx_Ack.xml example message(s)</i>	<i>32</i>
3.2	GET PORTPLUS NOTIFICATION DETAILS	32
3.2.1	<i>Introduction</i>	<i>32</i>
3.2.2	<i>Message Flow</i>	<i>33</i>
3.2.3	<i>ES2SSN_ShipCall_Req.xml message.....</i>	<i>33</i>
3.2.4	<i>SSN2ES_ShipCall_Res.xml message</i>	<i>44</i>
3.3	GET SHIP (MRS) NOTIFICATION DETAILS.....	63
3.3.1	<i>Introduction</i>	<i>63</i>
3.3.2	<i>Message Fow</i>	<i>63</i>
3.3.3	<i>ES2SSN_Ship_Req.xml message.....</i>	<i>63</i>
3.3.4	<i>SSN2ES_Ship_Res.xml message</i>	<i>66</i>
3.4	GET INCIDENTREPORT NOTIFICATION DETAILS	70
3.4.1	<i>Introduction</i>	<i>70</i>
3.4.2	<i>Message Fow</i>	<i>71</i>
3.4.3	<i>ES2SSN_IncidentReport_Req.xml message.....</i>	<i>71</i>
3.4.4	<i>SSN2ES_IncidentReport_Res.xml message</i>	<i>75</i>
3.5	GET VESSEL ENRICHMENT AND EXEMPTION DATA	90
3.5.1	<i>Introduction</i>	<i>90</i>
3.5.2	<i>Message flow.....</i>	<i>90</i>
3.5.3	<i>Enrichment and Exemption requests</i>	<i>91</i>
3.5.4	<i>SSN2SEG_Enrichment_Res.xml message</i>	<i>92</i>
3.5.5	<i>SSN2SEG_Exemption_Res.xml message</i>	<i>97</i>
	APPENDIX A: ATTRIBUTES AND SIMPLE TYPES USED IN MESSAGES EXCHANGED	101

1 INTRODUCTION

1.1 Purpose

The purpose of the system interface guide is to describe the interface between the SSN Central system and an EMSA maritime application external to SSN EIS (e.g. STIRES, SEG, and THETIS), hereafter referred to as External System (ES), for the exchange of:

- IncidentDetail notifications from ES to SSN Central.
- PortPlus notification details from SSN Central to ES upon request.
- Ship (MRS) notification details from SSN Central to ES upon request.
- IncidentReport notification details from SSN Central to ES upon request.
- Vessel Enrichment data related with the voyages, incidents and MRS notifications from SSN Central to ES upon request.
- Exemptions being active for all valid ships.

1.2 Scope

This document defines the general requirements of the interface between an external application (ES) and the traffic monitoring system SafeSeaNet (SSN) with the scope of exchanging notifications and requests for details concerning ship calldata

1.3 Reference and Applicable documents

Id	Reference	Title	Version
R1	SSN-SIG-PartA-ArcFuncServices	SSN System Interface Guide - SSN architecture and functional services overview	1.21
R2	SSN-SIG-PartB-DataTypesAttributesDefinitionsForXML-basedDataExchange-v1.00	SSN System Interface Guide -PartB: DataTypesAttributesDefinitionsForXML-basedDataExchange	1.21
R3	RFC artf21256	SC1/ EMSAOP182015- (Evolutive Maintenance) Requirement EIS_SSNv3.3_artf18943_2queryCriteriaChanges	n/a
R4	RFC artf21258	SC1/ EMSAOP182015- (Evolutive Maintenance) Requirement IS_SSNv3.3_artf18943_2addDetectedVoyagesExclusion (Desirable)	n/a
R5	SSN-SDD	SSN System Design Document	1.70
R6	SSN-EIS-SRS-OP18-2015-SC07	SSN EIS System Requirements Specifications OP18/2015 SC07	1.00

1.4 Abbreviations and acronyms

A list of the principal abbreviations and acronyms used in the document is provided here for a better understanding of this document.

Abbreviation	Definition
CSD	Central Ship Database
EMSA	European Maritime Safety Agency
ES	External System (to SafeSeaNet)
IMO	International Maritime Organisation
ISO	International Organization for Standardization
ITU	International Telecommunications Commission
MS	Member State
MMSI	Maritime Mobile Service Identity
MRS	Mandatory Ship Reporting System
N/A	Not Applicable or Not Available
NPR	National Proxy
OSD	Operational Ship Database
SSN	SafeSeaNet
URL	Unified Resource Locator
WADL	Web Application Description Language . It describes XML over HTTP interfaces
WSDL	Web Service Definition Language
XML	eXtensible Markup Language

2 SYSTEM INTERFACES

2.1 Services Overview

This process outlines the flow of activities performed when SSN Central pushes notification with ship call data to ESas well as when ES issues requests to SSN Central for specific PortPlus notification details.

The **sendIncidentDetail** notifications are used by ES to notify SSN Central of a new IncidentReport.

The **get PortPlus** notification details are used by ES to get from SSN Central detailed information about:

- Specific operational information related to the various stages of a ship call for a given vessel. Such information may relate, for instance, to the expected ship call on the basis of the ETA, the most recent departure of the ship or on the basis of ATDPortOfCall, etc.;
- The whole set of notifications concerning the current voyage of a specific ship (i.e. the pre-arrival, arrival, departure notifications and associated – if made available – Hazmat declarations);
- Ship calls at a specific EuropeanPort during a specific time frame;
- Confirmation that Hazmat material exist on board a ship during her current voyage;
- Confirmation of the security information before the ship's arrival in a EU port;
- Confirmation of the waste and cargo residues on board before the ship's arrival in a EU port;
- Confirmation that Bunkers exist on board a ship during her current voyage;
- A short summary of Hazmat declaration describing the dangerous good on board during her current voyage;
- The whole set of information made available upon request to a MS on dangerous goods carried on board a ship during her current voyage.
- A short summary of the security information before the ship's arrival in a EU port;
- The whole set of information made available upon request to a MS on the securityinformationbefore the ship's arrival in a EU port;
- A short summary of the waste and cargo residues before the ship's arrival in a EU port; The whole set of information made available upon request to a MS, if not already registered in SSN EIS notification database, on the waste and cargo residues on board before the ship's arrival in a EU port;
- The whole set of information made available upon request to a MS on bunkers carried on board a ship during her current voyage.

The **get Ship (MRS)** notification details are used by ES to get from SSN Central detailed information about a given ship notification. Upon receiving such request, SafeSeaNet will ask the actual data provider to send him the detailed information. SafeSeaNet will then send it back to the data requester.

The **get IncidentReport** notification details are used by ES to get from SSN Central detailed information about an Incident Report. SafeSeaNet stores all the Incident Details reported by the data providers in it's database. Upon receiving such request, SafeSeaNet will retrieve the Incident Report requested from the database and will send it back to the data requester.

The **get Vessel Enrichment and Exemption** data are used by ES to get from SSN Central information related with:

- The active voyage information for all the valid ships.
- The active incidents at the time of request for all the valid ships.
- The latest received MRS report for all the valid ships.
- The exemptions being active for for all the valid ships.

2.2 Data Provider Interface

2.2.1 Send IncidentDetail notifications

Both ends act as nodes capable of processing SOAP 1.2 and/or web based XML messages (over HTTP/s). The message types used are as follows:

- **ES2SSN_IncidentDetail_Not**
- SSN2ES_Receipt

For every notification, a synchronous one-way message connection is established to the SSN-EIS SOAP node.

2.3 Data Requestor Interface

2.3.1 Get PortPlus Notification details

Both ends act as nodes capable of processing SOAP 1.2 and/or web-based XML messages (over HTTP/s). The message types used are as follows:

- **ES2SSN_ShipCall_Req**
- **SSN2ES_ShipCall_Res**
- SSN2ES_Receipt

For the ShipCall request, two asynchronous, one-way connections are established.

2.3.2 Get Ship (MRS) Notification details

Both ends act as nodes capable of processing SOAP 1.2 and/or web-based XML messages (over HTTP/s). The message types used are as follows:

- **ES2SSN_Ship_Req**
- **SSN2ES_Ship_Res**
- SSN2ES_Receipt

For the Ship request, two asynchronous, one-way connections are established.

2.3.3 Get IncidentReport Notification details

Both ends act as nodes capable of processing SOAP 1.2 and/or web based XML messages (over HTTP/s). The message types used are as follows:

- **ES2SSN_IncidentReport_Req**
- **SSN2ES_IncidentReport_Res**
- SSN2ES_Receipt

For the IncidentReportrequest, two asynchronous, one-way connections are established.

2.3.4 Get Vessel Enrichment and Exemption data

Request is submitted to a single end-point using RESTful Services.

The request operation:

- **HTTP GET Method (RESTful services)**

The message types used are as follows:

SSN Enrichment details are provided in a synchronous response XML message:

- **SSN2SEG_Enrichment_Res**

SSN Exemption details are provided in a synchronous response XML message:

- **SSN2SEG_Exemption_Res**

3 DATAEXCHANGE MESSAGES

3.1 Send IncidentDetail notifications

3.1.1 Introduction

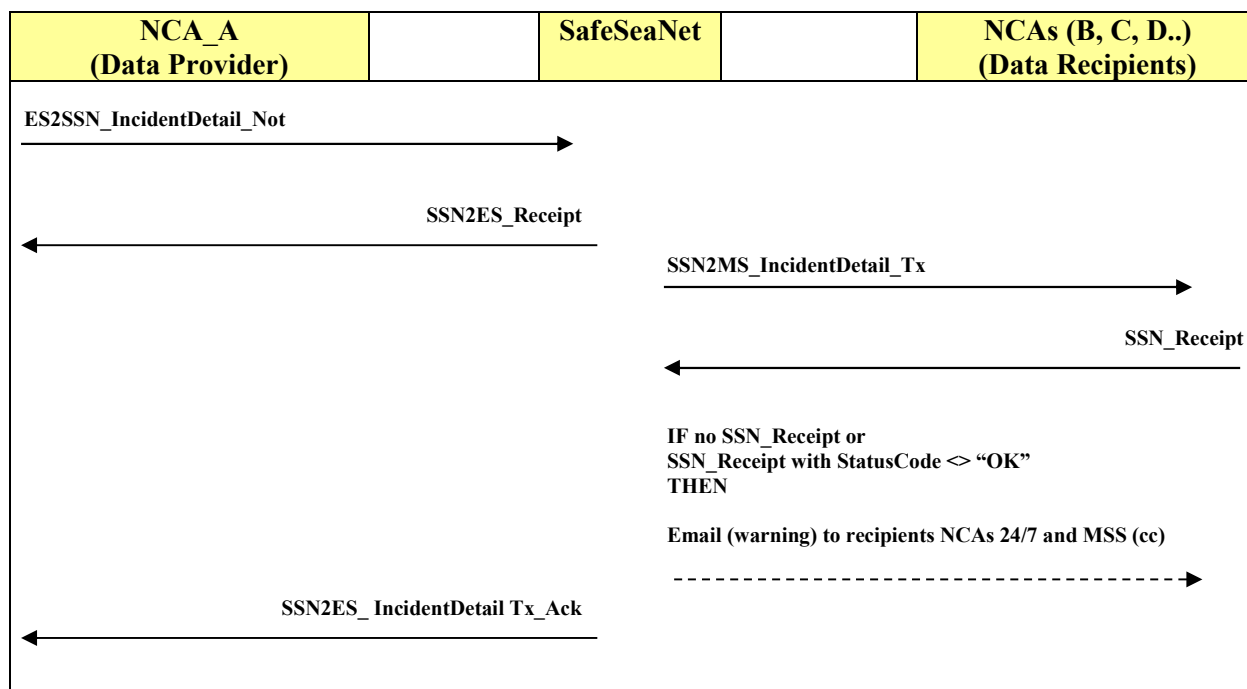
The **ES2SSN_IncidentDetail_Not.xml** message is sent by a maritime application external to SSN EIS (e.g. SEG or, if so decided, an MS application referred in this document as the data provider) to SafeSeaNet to notify SafeSeaNet that in turn will distribute to the recipient Member States information about a specific incident type.

The following types of incidents are supported by SafeSeaNet:

Incident Type	Description
Waste	Waste reporting Incident
SITREP	Situation report
POLREP	Pollution report
Lost/found Containers	Reporting containers or packages drifting at sea
FailedNotification	Failed Notification report
VTSRulesInfringement	VTIS Rules Infringement report
BannedShip	Banned Ship report
InsuranceFailure	InsuranceFailure report
PilotOrPortReport	Pilot orPort report
Other	Any other one not in the above list

3.1.2 Message Flow

The following figure outlines the expected asynchronous flow of XML messages related to this transaction:



HTTP status codes:
- 200 OK

3.1.3 ES2SSN_IncidentDetail_Not.xml message

The following table describes the XML message used for the transaction.

Entities	Attributes	Occ
Header		1
	Version	1
	TestId	0-1
	ESRefId	1
	SentAt	1
	From	1
	To	1
Body		1
NotificationOriginator		0-1
	OriginatorID	1
Notification		1
Incident		0-1
IncidentIdentification		1
	Type	1
	IncidentID	1
	ReportSequence	0-1
	AssociatedIncidentReport	0-99
	AssociatedIncidentID	1
IncidentNotificationStatus		1
	UpdateStatus	1
	UpdateNotifications	0-99
	UpdateMSRefId	1
IRDistributionDetails		1
	DistributionIR_yes_no	1
	IRDistributionToFlagState	0-1
	IRRecipient	0-99
	RecipientCountry	1
	ActionRequestedDetail	0-1
IRVesselIdentificationList		0-1
	IRVesselIdentification	1-99

Entities				Attributes	Occ
				IRVessel_IdentityVerified	0-1
				IMONumber	0-1
				MMSINumber	0-1
				CallSign	0-1
				ShipName	0-1
				Flag	0-1
				IRNumber_FishingVessel	0-1
				IRVessel_IdentityNotFullyVerified	0-1
				DescribeVessel	1
				IRVoyageInformation	0-1
				PortofDeparture	0-1
				PortOfDestination	0-1
				TotalPersonsOnBoard	0-1
				CargoManifest	0-1
				UrlDetails	0-1
				Url	1
				DocType	1
				ContactDetails	0-1
				LastName	0-1
				FirstName	0-1
				LoCode	1
				Phone	1
				Fax	1
				EMail	0-1
				ShipPositionAtTimeOfIncident	0-1
				GeoCoordinates	0-1
				Longitude	1
				Latitude	1
				Area	0-1
				GeographicalArea	1
				BearingDistance	0-1
				Bearing	1
				Distance	1
				Mark	1
				ShipPositionAtTimeOfReporting	0-1
				GeoCoordinates	0-1
				Longitude	1
				Latitude	1
				Area	0-1

Entities					Attributes	Occ
					GeographicalArea	1
					BearingDistance	0-1
					Bearing	1
					Distance	1
					Mark	1
					AuthorityReportingIncident	1
					SSNUserIdentifier	0-1
					SSNUserID	1
					IdentificationOfAuthority	0-1
					AuthorityName	1
					LoCode	1
					Phone	1
					Fax	1
					EMail	0-1
					IncidentDetailsDocument	0-1
					Base64Details	1
					DocType	1
					Base64Content	1
					IncidentDetails	0-1
					WasteIncidentInformation	0-1
					NonComplianceInformation	1
					WasteDeliveryDuePort	1
					ETD	1
					InspectionReason	1
					InspectionInformation	0-1
					Deficiencies	1
					ActionTaken	1
					InspectionAuthority	1
					Name	1
					Phone	1
					Fax	0-1
					EMail	0-1
					SITREPIncidentInformation	0-1
					SITREPIInformation	1
					C_Situation	1
					MessageType	1
					NotifiedAt	1
					Nature	1
					D_NumberOfPersonsAtRisk	0-1

Entities						Attributes	Occ
						E_AssistanceRequired	0-1
						F_CoordinatingAuthority	0-1
						G_CasualtyDescription	0-1
						H_WeatherOnScene	0-1
						J_InitialActionTaken	1
						K_SearchArea	0-1
						L_CoordinatingInstructions	0-1
						M_FuturePlans	0-1
						N_AdditionalInformation	0-1
						POLREPIncidentInformation	0-1
						POLREPIInformation	1
						POLWARN	0-1
						P1_DateTime	1
						P3_Incident	0-1
						P4_Outflow	0-1
						P5_Acknowledge	0-1
						P2_Position	1
						GeoCoordinates	0-1
						Longitude	1
						Latitude	1
						Area	0-1
						GeographicalArea	1
						BearingDistance	0-1
						Bearing	1
						Distance	1
						Mark	1
						POLINF	0-1
						P40_DateTime	0-1
						P41_PollutionPosition	0-1
						P42_PollutionChars	0-1
						P43_PollutionSource	0-1
						P44_Wind	0-1
						Speed	1
						Direction	1
						P45_Tide	0-1
						Speed	1
						Direction	1
						P46_SeaState	0-1
						WaveHeight	1

Entities						Attributes	Occ
						Visibility	0-1
						P47_PollutionDrift	0-1
						DriftCourse	1
						DriftSpeed	1
						P48_PollutionEffectForecast	0-1
						P49_ObserverIdentity	0-99
						Name	1
						HomePort	0-1
						Flag	0-1
						CallSign	0-1
						P50_ActionTaken	1
						P51_Photos	0-1
						P52_InformedStateOrg	0-99
						Name	1
						P53_OtherInformation	0-1
						P60_Acknowledge	0-1
						POLFAC	0-1
						P80_DateTime	0-1
						P81_RequestForAssistance	0-1
						Assistance	0-1
						P82_Cost	0-1
						P83_PreArrangements	0-1
						P84_Delivery	0-1
						P85_InformedStateOrg	0-99
						Name	1
						P86_ChangeOfCommand	0-1
						P87_ExchangeOfInformation	0-1
						P88_OtherInformation	0-1
						P99_Acknowledge	0-1
						LostFoundObjectIncidentInformation	0-1
						LostFoundObjectInformation	1
						DateTimeReportLostFoundObject	1
						P1_ReportType	1
						P2_ShipOrObserverIdentification	0-1
						IMONumber	0-1
						MMSINumber	0-1
						CallSign	0-1

Entities					Attributes	Occ
					ShipName	0-1
					Flag	0-1
					IRNumber_FishingVessel	0-1
					Other	0-1
					ObjectInformation	1
					P3_ObjectPosition	1
					GeoCoordinates	0-1
					Longitude	1
					Latitude	1
					Area	0-1
					GeographicalArea	1
					BearingDistance	0-1
					Bearing	1
					Distance	1
					Mark	1
					ObjectDetails	0-1
					P4_NumberOfObjects	0-1
					P5_TypeOfGoods	0-1
					Object	0-99
					Description	1
					CargoLeaking	0-1
					Wind	0-1
					Speed	1
					Direction	1
					Tide	0-1
					Speed	1
					Direction	1
					SeaState	0-1
					WaveHeight	1
					Visibility	0-1
					ObjectDrift	0-1
					DriftCourse	1
					DriftSpeed	1
					FailedNotificationIncidentInformation	0-1
					Description	1
					<TBD>	
					VTSRulesInfringementIncidentInformation	0-1
					Description	1

Entities					Attributes	Occ
					<TBD>	
					BannedShipIncidentInformation	0-1
					Description	1
					<TBD>	
					InsuranceFailureIncidentInformation	0-1
					Description	1
					<TBD>	
					PilotOrPortReportIncidentInformation	0-1
					Description	1
					<TBD>	
					OtherIncidentInformation	0-1
					Description	1
					<TBD>	
					<TBD>	
					Feedback	0-1
					FeedbackIdentification	1
					FeedbackID	1
					IncidentID	1
					FeedbackNotificationStatus	1
					UpdateStatus	1
					UpdateNotifications	0-99
					UpdateMSRefId	1
					FeedbackDistribution	1
					DistributionFeedback_yes_no	1
					FeedbackDistributionToFlagState	0-1
					FeedbackRecipient	0-99
					RecipientCountry	1
					AuthorityReportingAction	1
					SSNUserIdentifier	0-1
					SSNUserID	1
					IdentificationOfAuthority	0-1
					AuthorityName	1
					LoCode	1
					Phone	1
					Fax	1
					EMail	0-1
					ReportActionDocument	0-1
					Base64Details	1

Entities							Attributes	Occ
							DocType	1
							Base64Content	1
						ReportActionDetails		0-1
							DateTimeReportAction	1
							Details	1
						<TBD>		-

3.1.4 ES2SSN_IncidentDetail_Not.xmlbusiness rules

The following table describes the ES2SSN_IncidentDetail_Not XML message used for the transaction and the applicable business rules.

ES2SSN_IncidentDetail_Not - Item	Occ	Description
Header	1	Header Node
Version	1	none
TestId	0-1	none
ESRefId	1	The ESRefId must be unique
SentAt	1	Format "YYYY-MM-DDThh:mm:ssTZD" Where TZD = time zone designator (Z or +hh:mm or -hh:mm).
From	1	none
To	1	none
Body	1	Body Node
NotificationOriginator	0-1	
OriginatorID	1	The user ID of the end-user who is the actual originator of the notification submitted by SafeSeaNet Ecosystem GUI to EIS.
Notification	1	Notification Node
Incident	0-1	Incident Node. Not allowed if Feedback element is provided
IncidentIdentification	1	Incidentidentification Node
Type	1	The same "type" should be maintained during the overall updating process

ES2SSN_IncidentDetail_Not - Item	Occ	Description
IncidentID	1	The IncidentID must be unique per national SSN system (e.g. after an event such as a collision a SITREP and a POLREP are issued by the data provider. The two IRs will have two different IncidentID). Updates of information related to the same incident report message must be sent with the same IncidentID of the original message (e.g. after the collision, the reporting authority sends an update for the SITREP. In such a case the update will quote the same IncidentID of the original SITREP).
ReportSequence	0-1	none
AssociatedIncidentReport	0-99	AssociatedIncidentReport Node
AssociatedIncidentID	1	none
IncidentNotificationStatus	1	IncidentNotificationStatus element node
UpdateStatus	1	<p>Values of UpdateStatus are "N" for new incident reports, "U" for updates of incident reports, and "D" for deletion of incident reports.</p> <p>The first message regarding an incident must have UpdateStatus="N" (New). All messages with UpdateStatus="N" with an IncidentID already registered in SSN are rejected.</p> <p>The following rules should be considered whenever a message is sent with UpdateStatus="U" (Update):</p> <ol style="list-style-type: none"> 1. An update message should always include all the details of the Incident Report: <ul style="list-style-type: none"> - Elements to be updated with their attributes, - Additional elements, - Elements previously provided with their attributes. 2. Nonupdated elements and attributes will be kept unchanged in the SSN database. 3. To remove a non-mandatory text attribute, an empty string must be quoted (""). 4. If an update message is received by SSN before the original message has been registered in SSN (e.g. due to some error or technical delay), SSN nevertheless registers the update message and keeps it in its database. A warning is sent by e-mail to the NCA. 5. UpdateStatus="U" can only be used by the originator (attribute "OriginatorID" of NotificationOriginator) of the IncidentReport. <p>StatusReason="D" (delete) can only be used by the originator (attribute "OriginatorID" of NotificationOriginator) of the Incident Report.</p> <p>IncidentID of a deleted message cannot be reused.</p> <p>A "Deletion" of a previously sent message is distributed. If "D" is provided, SSN will automatically forward it to the recipients of the last update.</p>
UpdateNotifications	0-99	Mandatory in case of UpdateStatus="U" (update) or "D" (delete).

ES2SSN_IncidentDetail_Not - Item	Occ	Description
		Used to identify the list of message(s) that were previously sent regarding that Incident Report (same IncidentID).
UpdateMSRefId	1	None
IRDistributionDetails	1	DistributionDetails element node.
DistributionIR_yes_no	1	2 values "Y" or "N". If "Y" is quoted then IRDistributionToFlagState and/or at least one IRRecipient must be quoted.
IRDistributionToFlagState	0-1	If "Y", SSN automatically distributes the incident report to the flag States of ships involved in the incident and flying the flag of a SSN participant (SSN uses the Flag attribute in IRVessel_IdentityVerified).
IRRecipient	0-99	None
RecipientCountry	1	None
ActionRequestedDetail	0-1	Content of the action requested.
IRVesselIdentificationList	0-1	IRVesselIdentificationList element node. To be provided if one or several ships are involved in the incident. Mandatory if Incident Type is: <ul style="list-style-type: none"> - WasteIncident - FailedNotification - VTSRulesInfringement - BannedShip - InsuranceFailure - PilotOrPortReport
IRVesselIdentification	1-99	IRVesselIdentification element node. To be used to identify a single ship.
IRVessel_IdentityVerified	0-1	IRVessel_IdentityVerified element node. Mandatory if IRVessel_IdentityNotFullyVerified not provided. Not accepted if IRVessel_IdentityNotFullyVerified provided.
IMONumber	0-1	Mandatory if MMSINumber or IRNumber_FishingVessel not given.
MMSINumber	0-1	Mandatory if IMONumber or IRNumber_FishingVessel not given.
CallSign	0-1	none
ShipName	0-1	none
Flag	0-1	none
IRNumber_FishingVessel	0-1	Mandatory if IMONumber or MMSINumber not given.
IRVessel_IdentityNotFullyVerified	0-1	IRVessel_IdentityNotFullyVerified element node. Mandatory if IRVessel_IdentityVerified not provided. Not accepted if IRVessel_IdentityVerified provided. If only one ship is identified in the Incident Report and if IRVessel_IdentityNotFullyVerified, the Incident Report will be recorded in SSN as Incident Report with non identified vessel.
DescribeVessel	1	
IRVoyageInformation	0-1	VoyageInformation element node.

ES2SSN_IncidentDetail_Not - Item	Occ	Description
PortofDeparture	0-1	none
PortOfDestination	0-1	none
TotalPersonsOnBoard	0-1	none
CargoManifest	0-1	CargoManifest element node
UrlDetails	0-1	UrlDetails element node. Mandatory if ContactDetails not provided
Url	1	The Url must start with https://
DocType	1	Extensions are case insensitive
ContactDetails	0-1	ContactDetails element node. Mandatory if UrlDetails not provided.
LastName	0-1	none
FirstName	0-1	none
LoCode	1	Location code of the Maritime Authority. Can be any LOCODE listed in the UNECE LOCODE list (i.e. not only LOCODES of ports) or any LOCODE listed in the SSN specific LOCODE list of EMSA
Phone	1	Only numbers and the symbol "+" are allowed. No spaces allowed.
Fax	1	Only numbers and the symbol "+" are allowed. No spaces allowed.
EMail	0-1	Email address of the contact person.
ShipPositionAtTimeOfIncident	0-1	ShipPositionAtTimeOfIncident element node. Mandatory for Incident type is SITREP with vessel identified (element IRVessel_IdentityVerified is provided)
GeoCoordinates	0-1	GeoCoordinates element node. Mandatory if Area or BearingDistance not provided.
Longitude	1	none
Latitude	1	none
Area	0-1	Area element node. Mandatory if GeoCoordinates or BearingDistance not provided
GeographicalArea	1	none
BearingDistance	0-1	BearingDistance element node. Mandatory if Area or GeoCoordinates not provided
Bearing	1	Indicated in the 360 degrees notation from true north and shall be that of the position from the mark
Distance	1	Indicated in nautical miles.
Mark	1	none
ShipPositionAtTimeOfReporting	0-1	ShipPositionAtTimeOfReporting element node. Not required if the position is the same as ShipPositionAtTimeOfIncident
GeoCoordinates	0-1	GeoCoordinates element node. Mandatory if Area or BearingDistance not provided
Longitude	1	none
Latitude	1	none

ES2SSN_IncidentDetail_Not - Item	Occ	Description
Area	0-1	Area element node. Mandatory if GeoCoordinates or BearingDistance not provided
GeographicalArea	1	none
BearingDistance	0-1	BearingDistance element node. Mandatory if Area or GeoCoordinates not provided
Bearing	1	Indicated in the 360 degrees notation from true north and shall be that of the position from the mark
Distance	1	Indicated in nautical miles.
Mark	1	none
AuthorityReportingIncident	1	Defines the authority responsible for the reporting of the Incident Report (e.g. VTS, MRCC etc...). Recommendation: Identification should preferably be done with the SSNUserID.
SSNUserIdentifier	0-1	SSN user identification. Not allowed if IdentificationOfAuthority is provided.
SSNUserID	1	The authority ID or web-user ID as defined by the data provider in the SSN central management console.
IdentificationOfAuthority	0-1	Identification of authority. Not allowed if SSNUserIdentifier is provided.
AuthorityName	1	None
LoCode	1	None
Phone	1	Only numbers and the symbol "+" are allowed. No spaces allowed.
Fax	1	Only numbers and the symbol "+" are allowed. No spaces allowed.
EMail	0-1	Email address of the contact person.
IncidentDetailsDocument	0-1	IncidentDetailsDocument element node. Mandatory if IncidentDetails not provided. Can also be provided as complementary information of IncidentDetails.
Base64Details	1	Base64Details element node. Indicates the document containing the notification details.
DocType	1	Extensions are not case sensitive
Base64Content	1	none
IncidentDetails	0-1	IncidentDetails element node. Only 1 child element is allowed. Mandatory if IncidentDetailsDocument not provided.
<u>WasteIncidentInformation</u>	0-1	WasteIncidentInformation element node, child of IncidentDetails. Not allowed if another child element of IncidentDetails is specified. Only valid if IncidentIdentification / Type="Waste".
NonComplianceInformation	1	NonComplianceInformation element node.
WasteDeliveryDuePort	1	none
ETD	1	Format "YYYY-MM-DDThh:mm:ssTZD" Where TZD = time zone designator (Z or +hh:mm or -hh:mm).

ES2SSN_IncidentDetail_Not - Item	Occ	Description
InspectionReason	1	none
<i>InspectionInformation</i>	0-1	InspectionInformation element node.
Deficiencies	1	none
ActionTaken	1	none
<i>InspectionAuthority</i>	1	InspectionAuthority element node.
Name	1	none
Phone	1	Only numbers and the symbol "+" are allowed. No spaces allowed.
Fax	0-1	Only numbers and the symbol "+" are allowed. No spaces allowed.
E-Mail	0-1	Email address of the contact person.
<u>SITREPIncidentInformation</u>	0-1	SITREPIncidentInformation element node, child of IncidentDetails. Not allowed if another child element of IncidentDetails is specified. Only valid if IncidentIdentification / Type="SITREP".
<i>SITREPInformation</i>	1	SITREPInformation element node
<i>C_Situation</i>	1	C_Situation element node
MessageType	1	none
NotifiedAt	1	Format "YYYY-MM-DDThh:mm:ssTZD" Where TZD = time zone designator (Z or +hh:mm or -hh:mm). Date and time when the alert has been notified.
Nature	1	none
D_NumberOfPersonsAtRisk	0-1	Can be 'zero' when SITREP refers to a vessel that has been fully evacuated. If the number of persons at risk is unknown, the dummy value "99999" should be used.
E_AssistanceRequired	0-1	none
F_CoordinatingAuthority	0-1	If "AuthorityReportingIncident" is quoted then "F_CoordinatingAuthority" is not mandatory.
G_CasualtyDescription	0-1	none
H_WeatherOnScene	0-1	none
J_InitialActionTaken	1	none
K_SearchArea	0-1	none
L_CoordinatingInstructions	0-1	none
M_FuturePlans	0-1	none
N_AdditionalInformation	0-1	none
<u>POLREPIncidentInformation</u>	0-1	POLREPIncidentInformation element node, child of IncidentDetails. Not allowed if another child element of IncidentDetails is specified. Only valid if IncidentIdentification / Type="POLREP".
<i>POLREPInformation</i>	1	POLREPInformation element node. At Least one of the three elements POLWARN, POLINF or POLFAC has to be provided.

ES2SSN_IncidentDetail_Not - Item	Occ	Description
POLWARN	0-1	POLWARN element node. Initial notice (a first information or a warning of a casualty or the presence of oil slicks or harmful substances. Mandatory if POLINF or POLFAC not provided.
P1_DateTime	1	Format "YYYY-MM-DDThh:mm:ssTZD" Where TZD = time zone designator (Z or +hh:mm or -hh:mm). Date and time when the alert has been notified.
P3_Incident	0-1	none
P4_Outflow	0-1	none
P5_Acknowledge	0-1	none
P2_Position	1	P2_Position element node. Indicates the main position of the pollution.
GeoCoordinates	0-1	GeoCoordinates element node. Mandatory if Area or BearingDistance not provided.
Longitude	1	none
Latitude	1	none
Area	0-1	Area element node. Mandatory if GeoCoordinates or BearingDistance not provided
GeographicalArea	1	none
BearingDistance	0-1	BearingDistance element node. Mandatory if Area or GeoCoordinates not provided
Bearing	1	Indicated in the 360 degrees notation from true north and shall be that of the position from the mark
Distance	1	Indicated in nautical miles.
Mark	1	none
POLINF	0-1	POLINF element node. Detailed supplementary report. Mandatory if POLWARN or POLFAC not provided.
P40_DateTime	0-1	Format "YYYY-MM-DDThh:mm:ssTZD" Where TZD = time zone designator (Z or +hh:mm or -hh:mm). Date and time when the alert has been notified.
P41_PollutionPosition	0-1	Non-mandatory only if "P2_Position" is quoted
P42_PollutionChars	0-1	none
P43_PollutionSource	0-1	none
P44_Wind	0-1	Wind element node.
Speed	1	Indicates wind speed in m/sec.
Direction	1	The direction always indicates from where the wind is blowing.
P45_Tide	0-1	Tide element node.
Speed	1	Indicates current speed of the tide in knots and tenths of knots.
Direction	1	The direction always indicates the direction in which the current tide is flowing.
P46_SeaState	0-1	SeaState element node.

ES2SSN_IncidentDetail_Not - Item	Occ	Description
WaveHeight	1	none
Visibility	0-1	none
P47_PollutionDrift	0-1	PollutionDrift element node.
DriftCourse	1	Indicates the drift course of pollution in degrees
DriftSpeed	1	Indicates the drift speed of pollution in knots and tenths of knots. In cases of air pollution (gas cloud), drift speed should be indicated in m/sec
P48_PollutionEffectForecast	0-1	none
P49_ObserverIdentity	0-99	ObserverIdentity element node. Identifies who has reported the incident. If it is a ship, name, home port, flag and call sign must be given. Ships on-scene could also be indicated under this item by name, home port, flag and call sign, especially if the polluter cannot be identified and the spill is considered to be of recent origin.
Name	1	none
HomePort	0-1	none
Flag	0-1	none
CallSign	0-1	none
P50_ActionTaken	1	none
P51_Photographs	0-1	none
P52_InformedStateOrg	0-99	InformedStateOrg element node.
Name	1	Name of other states and organisations informed
P53_OtherInformation	0-1	none
P60_Acknowledge	0-1	When this number is used, the message (telefax) should be acknowledged as soon as possible by the competent national authority
POLFAC	0-1	POLFAC element node. For requests for assistance from other Contracting Parties, as well as for operational matters in the assistance situation. Mandatory if POLWARN or POLINF not provided.
P80_DateTime	0-1	If it varies from POLWARN and POLINF. Format "YYYY-MM-DDThh:mm:ssTZD" Where TZD = time zone designator (Z or +hh:mm or -hh:mm). Date and time when the alert has been notified.
P81_RequestForAssistance	0-1	none
Assistance	0-1	Assistance element node. If "Assistance" is quoted then at least one of the 3 attributes ("P82_Cost", "P83_PreArrangements", "P84_Delivery") is mandatory
P82_Cost	0-1	none
P83_PreArrangements	0-1	none
P84_Delivery	0-1	none
P85_InformedStateOrg	0-99	InformedStateOrg element node. Only if different from POLINF
Name	1	Name of other states and organisations informed
P86_ChangeOfCommand	0-1	none

ES2SSN_IncidentDetail_Not - Item	Occ	Description
P87_ExchangeOfInformation	0-1	none
P88_OtherInformation	0-1	none
P99_Acknowledge	0-1	When this number is used, the message (telefax) should be acknowledged as soon as possible by the competent national authority
<u>LostFoundObjectIncidentInformation</u>	0-1	LostFoundObjectIncidentInformation element node, child of IncidentDetails. Not allowed if another child element of IncidentDetails is specified. Only valid if IncidentIdentification / Type="LostFoundContainers".
LostFoundObjectInformation	1	LostFoundObjectInformation element node.
DateTimeReportLostFoundObject	1	none
P1_ReportType	1	none
P2_ShipOrObserverIdentification	0-1	P2_ShipOrObserverIdentification element node.
IMONumber	0-1	At least one of IMONumber, MMSINumber, CallSign, ShipName, IRNumber_FishingVessel or Other must be provided.
MMSINumber	0-1	
CallSign	0-1	
ShipName	0-1	
Flag	0-1	
IRNumber_FishingVessel	0-1	
Other	0-1	
ObjectInformation	1	ObjectInformation element node.
P3_ObjectPosition	1	P3_ObjectPosition element node. Last seen position of the object at sea, or last position of ship when the object has presumably been lost
GeoCoordinates	0-1	GeoCoordinates element node. Mandatory if Area or BearingDistance not provided.
Longitude	1	none
Latitude	1	none
Area	0-1	Area element node. Mandatory if GeoCoordinates or BearingDistance not provided
GeographicalArea	1	none
BearingDistance	0-1	BearingDistance element node. Mandatory if Area or GeoCoordinates not provided
Bearing	1	Indicated in the 360 degrees notation from true north and shall be that of the position from the mark.
Distance	1	Indicated in nautical miles.
Mark	1	none
ObjectDetails	0-1	ObjectDetails element node
P4_NumberOfObjects	0-1	
P5_TypeOfGoods	0-1	none

ES2SSN_IncidentDetail_Not - Item	Occ	Description
Object	0-99	Object element node.
Description	1	none
CargoLeaking	0-1	none
Wind	0-1	Wind element node.
Speed	1	Indicates wind speed in m/sec.
Direction	1	The direction always indicates from where the wind is blowing.
Tide	0-1	Tide element node.
Speed	1	Indicates current speed of the tide in knots and tenths of knots.
Direction	1	The direction always indicates the direction in which the current tide is flowing.
SeaState	0-1	SeaState element node.
WaveHeight	1	none
Visibility	0-1	none
ObjectDrift	0-1	ObjectDrift element node.
DriftCourse	1	Indicates the drift course of containers in degrees
DriftSpeed	1	Indicates the drift speed of containers in knots and tenths of knots. In cases of air pollution (gas cloud), drift speed should be indicated in m/sec
<u>FailedNotificationIncidentInformation</u>	0-1	FailedNotificationIncidentInformation element node, child of IncidentDetails. Not allowed if another child element of IncidentDetails is specified. Only valid if IncidentIdentification / Type="FailedNotification".
Description	1	Description of the incident (free text)
<TBD>		
<u>VTSRulesInfringementIncidentInformation</u>	0-1	VTSRulesInfringementIncidentInformation element node, child of IncidentDetails. Not allowed if another child element of IncidentDetails is specified. Only valid if IncidentIdentification / Type="VTSRulesInfringement".
Description	1	Description of the incident (free text)
<TBD>		
<u>BannedShipIncidentInformation</u>	0-1	BannedShipIncidentInformation element node, child of IncidentDetails. Not allowed if another child element of IncidentDetails is specified. Only valid if IncidentIdentification / Type="BannedShip".
Description	1	Description of the incident (free text)
<TBD>		
<u>InsuranceFailureIncidentInformation</u>	0-1	InsuranceFailureIncidentInformation element node, child of IncidentDetails. Not allowed if another child element of IncidentDetails is specified. Only valid if IncidentIdentification / Type="InsuranceFailure".

ES2SSN_IncidentDetail_Not - Item	Occ	Description
Description	1	Description of the incident (free text)
<TBD>		
<u>PilotOrPortReportIncidentInformation</u>	0-1	PilotOrPortReportIncidentInformation element node, child of IncidentDetails. Not allowed if another child element of IncidentDetails is specified. Only valid if IncidentIdentification / Type="PilotOrPortReport".
Description	1	Description of the incident (free text)
<TBD>		
<u>OtherIncidentInformation</u>	0-1	OtherIncidentInformation element node, child of IncidentDetails. Not allowed if another child element of IncidentDetails is specified. Only valid if IncidentIdentification / Type="Others".
Description	1	Description of the incident (free text)
<TBD>		
<TBD>		
Feedback	0-1	Feedback element node. Not allowed if Incidentelement is provided.
FeedbackIdentification	1	FeedbackIdentification element node.
FeedbackID	1	The FeedbackID must be unique per national SSN system.
IncidentID	1	Feedback of information related to an incident report message must be sent with the IncidentID of the original Incident.
FeedbackNotificationStatus	1	FeedbackNotificationStatus element note.
UpdateStatus	1	<p>Values of UpdateStatus are "N" for new feedback, "U" for updates of feedback, and "D" for deletion of feedback.</p> <p>The first message regarding a feedback must have the UpdateStatus="N" (New). All messages with UpdateStatus="N" with a FeedbackID already registered in SSN are rejected.</p> <p>The following rules should be considered whenever a message is sent with UpdateStatus="U" (Update)</p> <ol style="list-style-type: none"> 1. An update message should always include all the details of the feedback: <ul style="list-style-type: none"> -Elements to be updated with their attributes, - Additional elements, - Elements previously provided with their attributes. 2. Non updated elements and attributes will be kept unchanged in the SSN database. 3. To remove a non-mandatory text attribute, an empty string must be quoted (""). 4. If an update message is received by SSN before the original message has been registered in SSN (e.g. due to some error or technical delay), SSN nevertheless registers the update message and keeps it in its database. A warning is sent by e-mail to the NCA. 5. UpdateStatus="U" can only be used by the originator (attribute "From" of Header) of the Feedback.

ES2SSN_IncidentDetail_Not - Item	Occ	Description
		StatusReason="D" (delete) can only be used by the originator (attribute "From" of Header) of the Feedback. The deletion of a feedback does not delete the original Incident Report and its updates. FeedbackID of a deleted message cannot be reused.
UpdateNotifications	0-99	Mandatory in case of UpdateStatus="U" (update) or "D" (delete). Used to identify the list of message(s) that were previously sent regarding that Feedback (same FeedbackID).
UpdateMSRefId	1	None
FeedbackDistribution	1	FeedbackDistribution element node.
DistributionFeedback_yes_no	1	2 values Y or N. If "Y" is quoted then FeedbackDistributionToFlagState and/or at least one FeedbackRecipient must be quoted.
FeedbackDistributionToFlagState	0-1	If "Y", SSN automatically distributes the incident report to the flag States of ships involved in the incident and flying the flag of a SSN participant (SSN uses the Flag attribute in IRVessel_IdentityVerified from the Incident element).
FeedbackRecipient	0-99	None
RecipientCountry	1	None
AuthorityReportingAction	1	Defines the authority responsible for the reporting of the feedback. Recommendation: identification should preferably be done with the SSNUserID.
SSNUserIdentifier	0-1	SSN user identification. Not allowed if IdentificationOfAuthority is provided.
SSNUserID	1	The authority ID or web-user ID as defined by the data provider in the SSN central management console.
IdentificationOfAuthority	0-1	Identification of authority. Not allowed if SSNUserIdentifier is provided.
AuthorityName	1	none
LoCode	1	Location code of the Maritime Authority. Can be any LOCODE listed in the UNECE LOCODE list (i.e. not only LOCODES of ports) or any LOCODE listed in the SSN specific LOCODE list of EMSA
Phone	1	Only numbers and the symbol "+" are allowed. No spaces allowed.
Fax	1	Only numbers and the symbol "+" are allowed. No spaces allowed.
EEmail	0-1	Email address of the contact person.
ReportActionDocument	0-1	ReportActionDocument element node
Base64Details	1	Base64Details element node. Indicates the location of the document containing the details.
DocType	1	Extensions are not case sensitive
Base64Content	1	none
ReportActionDetails	0-1	ReportActionDetails element node
DateTimeReportAction	1	none

ES2SSN_IncidentDetail_Not - Item	Occ	Description
Details	1	Description of the reported action (free text)
<TBD>		

3.1.5 ES2SSN_IncidentDetail_Not.xml example message(s)

The following examples illustrate the details of a notification message of the ES2SSN_IncidentDetail_Not.xml type:

```
<?xml version="1.0" encoding="UTF-8"?>
<ES2SSN_IncidentDetail_Not xmlns="urn:eu.emsa.ssn.voyage" xmlns:ssn="urn:eu.emsa.ssn"
xmlns:xsi="http://www.w3.org/2001/XMLSchema-instance" xsi:schemaLocation="urn:eu.emsa.ssn.voyage
seg_4_0.xsd">
  <Header ESRefId="MS2SSN_IR_Not_20180112_1" From="SEG" SentAt="2018-01-08T10:30:00Z" To="SafeSeaNet"
Version="4.0"/>
  <Body>
    <NotificationOriginator OriginatorID="thanosId"/>
    <Notification>
      <ssn:Incident>
        <ssn:IncidentIdentification IncidentID="GRInAmOB1u6l8Hpb9" Type="POLREP"/>
        <ssn:IncidentNotificationStatus UpdateStatus="U">
          <ssn:UpdateNotifications UpdateMSRefId="MS2SSN_IR_Not_20150605_08"/>
        </ssn:IncidentNotificationStatus>
        <ssn:IRDistributionDetails DistributionIR_yes_no="Y" IRDistributionToFlagState="Y">
          <ssn:IRRecipient RecipientCountry="DE"/>
        </ssn:IRDistributionDetails>
        <ssn:IRVesselIdentificationList>
          <ssn:IRVesselIdentification>
            <ssn:IRVessel_IdentityVerified CallSign="LMTR" IMONumber="8022913"
MMSINumber="258319000" ShipName="GAYSER SENIOR"/>
            <ssn:ShipPositionAtTimeOfIncident>
              <ssn:GeoCoordinates Latitude="12" Longitude="12"/>
            </ssn:ShipPositionAtTimeOfIncident>
          </ssn:IRVesselIdentification>
        </ssn:IRVesselIdentificationList>
        <ssn:AuthorityReportingIncident>
          <ssn:SSNUserIdentifier SSNUserID="SSNADMIN"/>
        </ssn:AuthorityReportingIncident>
        <ssn:IncidentDetails>
          <ssn:POLREPIncidentInformation>
            <ssn:POLREPIInformation>
              <ssn:POLINF P50_ActionTaken="taken">
                <ssn:P49_ObserverIdentity CallSign="csign1" Flag="GR" HomePort="port1" Name="name1"/>
                <ssn:P49_ObserverIdentity HomePort="port3" Name="name3"/>
                <ssn:P52_InformedStateOrg Name="1"/>
              </ssn:POLINF>
            </ssn:POLREPIInformation>
          </ssn:POLREPIncidentInformation>
        </ssn:IncidentDetails>
      </ssn:Incident>
    </Notification>
  </Body>
```

</ES2SSN_IncidentDetail_Not>

3.1.6 SSN2ES_IncidentDetail_Tx_Ack.xml message

The **SSN2ES_IncidentDetail_Tx_Ack.xml** message is sent by SafeSeaNet to the requestor URL, configured for the ES interface, of the data provider (attribute "From" of Header, i.e. SEG system) of the ES2SSN_IncidentDetail_Not as a receipt message indicating the consolidated status of the distribution to the list of recipient Member States.

The following table describes the _IncidentDetail_Tx_Ack XML message used for the transaction.

SSN2ES_IncidentDetail_Tx_Ack - Elements		Attributes	Occ
Header			1
		Version	1
		TestId	0-1
		SSNRefId	1
		SentAt	1
		From	1
		To	1
Body			1
NotificationOriginator			0-1
	OriginatorID		1
IncidentReportAcknowledged			1
	IncidentID		1
	MsRefIDofIRupdate		0-1
IRorFeedbackRecipients_Ack_list			1
SSNparticipant_asIRorFeedbackRecipient			1-99
	RecipientCountry		1
SSN_AuthorityXML			0-1
	SSN_ID_AuthorityXML		1
	RecipientXML_Ack		1
EmailUserslist_Recipient_list			0-99
	RecipientUser_Email		1
	RecipientEmail_Ack		1
IRorFeedbackFlagStateRecipient_Ack_list			0-1
SSNparticipant_asIRorFeedbackRecipient			1-99
	RecipientCountry		1
SSN_AuthorityXML			0-1
	SSN_ID_AuthorityXML		1
	RecipientXML_Ack		1
EmailUserslist_Recipient_list			0-99

SSN2ES_IncidentDetail_Tx_Ack - Elements				Attributes	Occ
				RecipientUser_Email	1
				RecipientEmail_Ack	1

3.1.7 SSN2ES_IncidentDetail_Tx_Ack.xml business rules

The following table describes the SSN2ES_IncidentDetail_Tx_Ack XML message used for the transaction and the applicable business rules.

SSN2ES_IncidentDetail_Tx_Ack - Item	Occ	Description
Header	1	Header Node
Version	1	none
TestId	0-1	none
SSNRefId	1	The SSNRefId must be unique
SentAt	1	Format "YYYY-MM-DDThh:mm:ssTZD" Where TZD = time zone designator (Z or +hh:mm or -hh:mm).
From	1	none
To	1	none
Body	1	Body Node
NotificationOriginator	0-1	
OriginatorID	1	The user ID of the end-user who is the actual originator of the notification submitted by SafeSeaNet Ecosystem GUI to EIS.
IncidentReportAcknowledged	1	None
IncidentID	1	From original ES2SSNIncidentDetail_Not
MsRefIDofIRupdate	0-1	MsRefID of updates. Mandatory if updates are distributed The message related to this MsRefId could take the following "UpdateStatus" values: "N" or "U" If an Incident Report quotes "N" or "U" in the attribute "UpdateStatus" then the distribution list is the list provided under the element "IRRecipientList" of the notification plus the flag state if it is quoted If a feedback quotes "N" or "U" in the attribute "UpdateStatus" then the distribution list is the list provided under the element "FeedbackRecipient" of the notification plus the flag state if it is quoted
IRorFeedbackRecipients_Ack_list	1	IRorFeedbackRecipients_Ack_list element node.
SSNparticipant_asIRorFeedbackRecipient	1-99	SSNparticipant_asRecipient element node
RecipientCountry	1	Identification of the recipient MS
SSN_AuthorityXML	0-1	Mandatory in case of XML recipient
SSN_ID_AuthorityXML	1	Identification of the XML recipient Authority
RecipientXML_Ack	1	XML ack status
EmailUserslist_Recipient_list	0-99	Mandatory in case of email recipients
RecipientUser_Email	1	Identification of the email recipient user
RecipientEmail_Ack	1	eMail ack status

SSN2ES_IncidentDetail_Tx_Ack - Item	Occ	Description
IRorFeedbackFlagStateRecipient_Ack_list	0-1	IRorFeedbackFlagStateRecipient_Ack_list element node.
SSNparticipant_asIRorFeedbackRecipient	1-99	SSNparticipant_asIRorFeedbackRecipient element node
RecipientCountry	1	Identification of the recipient MS
SSN_AuthorityXML	0-1	Mandatory in case of XML recipients
SSN_ID_AuthorityXML	1	Identification of the XML recipient Authority
RecipientXML_Ack	1	XML ack status
EmailUserslist_Recipient_list	0-99	Mandatory in case of email recipients
RecipientUser_Email	1	Identification of the email recipient user
RecipientEmail_Ack	1	eMail ack status

3.1.8 SSN2ES_IncidentDetail_Tx_Ack.xml example message(s)

```
<?xml version="1.0" encoding="UTF-8"?>
<SSN2ES_IncidentDetail_Tx_Ack xmlns="urn:eu.emsa.ssn.voyage"
  xmlns:ssn="urn:eu.emsa.ssn" xmlns:xsi="http://www.w3.org/2001/XMLSchema-instance"
  xsi:schemaLocation="urn:eu.emsa.ssn.voyage seg_4_0.xsd">
  <Header Version="4.0" SentAt="2018-01-23T12:46:04Z" From="SafeSeaNet" To="SEG"
  SSNRefId="ES2SSN_IR_Not_20180123_1"/>
  <Body>
    <Notification OriginatorOriginatorID="thanosId"/>
    <IncidentReportAcknowledged IncidentID="GRInAmOB1u6l8Hpb9"
  MsRefIDofIRupdate="ES2SSN_IR_Not_20180123_1"/>
    <IRorFeedbackRecipients_Ack_list>
      <ssn:SSNparticipant_asIRorFeedbackRecipient RecipientCountry="GR">
        <ssn:EmailUserslist_Recipient_list RecipientUser_Email="test@intrasoft-intl.com"
  RecipientEmail_Ack="OK"/>
      </ssn:SSNparticipant_asIRorFeedbackRecipient>
      <ssn:SSNparticipant_asIRorFeedbackRecipient RecipientCountry="GR">
        <ssn:SSN_AuthorityXML SSN_ID_AuthorityXML="GRPIR01"
  RecipientXML_Ack="OK"/>
      </ssn:SSNparticipant_asIRorFeedbackRecipient>
    </IRorFeedbackRecipients_Ack_list>
  </Body>
</SSN2ES_IncidentDetail_Tx_Ack>
```

3.2 Get PortPlus Notification details

3.2.1 Introduction

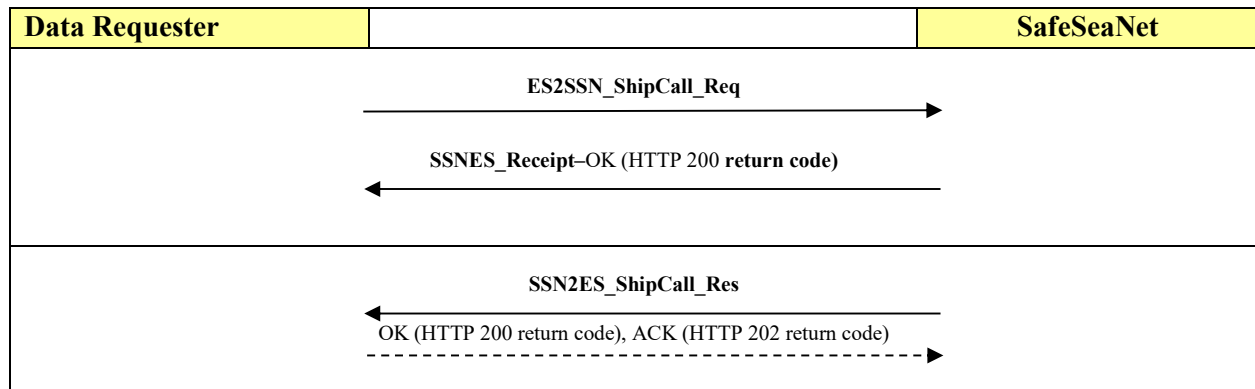
The **ES2SSN_ShipCall_Req.xml** message is sent by a maritime application external to SSN EIS (e.g. STIRES, SEG or, if so decided, an MS application) (*data requester*) to SSN EIS application to request the operational information (ship specific/ ship call specific/ port of call specific).

The **SSN2ES_ShipCall_Res.xml** message is the final response sent by SSNEIS to an external (to SSN EIS) application requesting the operational information stored in SSN (at EIS or

national level;) about a given vessel, a given port, a specified time period and/or a combination of the three (*data requester*).

3.2.2 Message Flow

The following figure outlines the expected asynchronous flow of XML messages related to this transaction:



3.2.3 ES2SSN_ShipCall_Req.xml message

3.2.3.1 Message description

The following table describes the XML message used for the transaction.

Entities		Attributes	Occ
Header			1
		Version	1
		TestId	0-1
		ESRefId	1
		SentAt	1
		TimeoutValue	1
		From	1
		To	1
Body			1
	RequestOriginator		0-1
		OriginatorID	1
	RequiredResponseCriteria		1
		ShipCallResp	1
		GetDetails	1
		GetHazmat	0-1
		GetWaste	0-1
		GetSecurity	0-1
		GetBunkers	0-1
	SearchCriteria		1
	TimePeriodCriteria		0-1

Entities				Attributes	Occ
				StartDateTime	0-1
				EndDateTime	0-1
			ShipIdentificationCriteria		0-1
				CSDID	0-1
				IMONumber	0-1
				MMSINumber	0-1
			PortOfCallIdentificationCriteria		0-1
				PortOfCall	1
			AdditionalVoyageCriteria		0-1
				ShipCallId	0-1
				SSNVoyageID	0-1
				NumberOfCalls	0-1
				NumberOfExpectedAndLastCalls	0-1
				ExcludeDetectedVoyagesYes	0-1

3.2.3.2 Business rules

The following table describes the XML message used for the transaction and the applicable business rules.

Item (element or sub-element or specific attribute)	Occ	Description
Header	1	
Version	1	
TestId	0-1	
ESRefId	1	The ESRefId must be unique. If the ESRefId was already used in a message sent to the Central SSN System, the message is rejected.
SentAt	1	
TimeoutValue	1	
From	1	
To	1	
Body	1	
RequestOriginator	0-1	
OriginatorID	1	The user ID of the end-user who is the actual originator of the request submitted by SafeSeaNet Ecosystem GUI to EIS.
RequiredResponseCriteria	1	
ShipCallResp	1	Defines the type of query and its options.

<i>Item (element or sub-element or specific attribute)</i>	<i>Occ</i>	<i>Description</i>
GetDetails	1	Type of query. Refer to the table below for possible values and description of queries, parameters and business rules. Only one of the four attributes GetHazard, GetWaste, GetSecurity, GetBunkers is allowed.
GetHazard	0-1	<ul style="list-style-type: none"> - May be used depending on the type of query (value of GetDetails). See table below. - Use "HazardSummary" if response should be limited to information from notifications as stored in SSN - Use "HazardDetails" if response should provide detailed information from the notification of dangerous and polluting goods obtained from the relevant MS. - If not provided but required for the type of query, "HazardSummary" will be considered.
GetWaste	0-1	<ul style="list-style-type: none"> - May be used depending on the type of query (value of GetDetails). See table below. - Use "WasteSummary" if response should provide only the WasteSummary information - Use "WasteDetails" if response should provide detailed information of waste and cargo residues. - If not provided but required for the type of query, "WasteSummary" will be considered.
GetSecurity	0-1	<ul style="list-style-type: none"> - May be used depending on the type of query (value of GetDetails). See table below. - Use "SecuritySummary" if response should be limited to information from notifications as stored in SSN - Use "SecurityDetails" if response should provide detailed information from the notification of security information obtained from the relevant MS. - If not provided but required for the type of query, "SecuritySummary" will be considered.
GetBunkers	0-1	<ul style="list-style-type: none"> - May be used depending on the type of query (value of GetDetails). See table below. - Only "BunkersDetails" may be used. Gets the information from the notification of bunkers obtained from the relevant MS.
SearchCriteria	1	Defines the query parameters. Elements and attributes to be provided within this element and business rules depend on type of query (value of GetDetails). See table 4 below.
TimePeriodCriteria	0-1	
StartDateTime	0-1	
EndDateTime	0-1	

Item (element or sub-element or specific attribute)	Occ	Description
<i>ShipIdentificationCriteria</i>	0-1	If defined then at least one of CSDID, IMONumber or MMSINumber must be defined.
CSDID	0-1	
IMONumber	0-1	
MMSINumber	0-1	
<i>PortOfCallIdentificationCriteria</i>	0-1	
PortOfCall	1	
<i>AdditionalVoyageCriteria</i>	0-1	AdditionalVoyageCriteria - Child to SearchCriteria element. If defined then at least one of ShipCallId or SSNVoyageID must be defined.
ShipCallId	0-1	Refer to business rules in the following subsection identifying when this attribute has to be provided by the data requester
SSNVoyageID	0-1	Refer to business rules 3.2.3.3 the following subsection identifying when this attribute has to be provided by the data requester
NumberOfCalls	0-1	Refer to business rules 3.2.3.3 the following subsection identifying when this attribute has to be provided by the data requester
NumberOfExpectedAndLastCalls	0-1	Default value is 10, if not defined. Number of last and planned ship calls for a vessel (if available information exists in EIS).
ExcludeDetectedVoyagesYes	0-1	The following definitions are applicable for voyages registered in the SSN EIS database: <ul style="list-style-type: none"> - Type A: "Reported voyages": All the voyages reported by MS (those that in the voyage record is consolidated (or not) detected entry and/ or detected exit information) - Type B: "Detected voyages": All the voyages solely detected by position data injected to SSN (those voyages whose sole information in the voyage record is the detected entry and/ or exit information) Notes: a. For those queries listed in the next section where the "Exclude Detected voyages" criterion is defined (value Yes) the system shall return the Type A voyages as defined above. b. For those queries listed below where the "Exclude Detected voyages" criterio is not included or it is included with value "N" shall return the Type A and Type B voyages as defined above

3.2.3.3 Business rules for the queries identified by the GetDetails attribute

Value of GetDetails (Type of query)	Parameters & Options Optional parameters are in brackets ()	Result of query	Business rules on parameters
ExpectedCallOfSelectedShip	CSDID or IMONumber or MMSINumber (StartDateTime) (GetHazmat) (GetWaste) (GetSecurity) (GetBunkers)	Central SSN will provide the ship call: - Without ATAPortOfCall, and - With ETAToPortOfCallafter and closest to StartDateTIme. Hazmat or Bunkers information in results is as reported before arrival to the port.	- CSDID or IMONumber or MMSINumber must be provided. - StartDateTIme must be between [SentAt – 30 days] and [SentAt + 30 days] - If StartDateTIme is not provided, SentAt value is considered
MostRecentArrivalOfSelectedShip	CSDID or IMONumber or MMSINumber (StartDateTime) (GetHazmat) (GetWaste) (GetSecurity) (GetBunkers) (ExcludeDetected voyagesYes)	Central SSN will provide the ship call: - With ATAPortOfCallbefore and closest to StartDateTIme, and - With ATDPortOfCall, if available, after StartDateTIme. Hazmat or bunkers information in results is as reported before arrival to the port.	- CSDID or IMONumber or MMSINumber must be provided. - StartDateTIme must be between [SentAt – 30 days] and [SentAt] - If StartDateTIme is not provided, SentAt value is considered Notes: This query should use reported and detected entries. The response should differentiate reported and detected information.
MostRecentDepartureOfSelectedShip	CSDID or IMONumber or MMSINumber (StartDateTime) (GetHazmat) (GetWaste) (GetSecurity) (GetBunkers) (ExcludeDetected voyagesYes)	Central SSN will provide the ship call with ATDPortOfCallbefore and closest to StartDateTIme. Hazmat or Bunkers information in results is as reported before departure from the port.	- CSDID or IMONumber or MMSINumber must be provided. - StartDateTIme must be between [SentAt – 30 days] and [SentAt] - If StartDateTIme is not provided, SentAt value is considered Notes: This query should use reported and detected entries. The response should differentiate reported and detected information.
RecentAndCurrentShipCallsOfSelectedShip	CSDID or IMONumber or MMSINumber (StartDateTime) (EndDateTime) (NumberOfCalls)	Central SSN will provide the list of ship calls with ATAPortOfCallwithin the time period defined by StartDateTIme and EndDateTIme.	- CSDID or IMONumber or MMSINumber must be provided. - StartDateTIme and EndDateTIme may be used in any order (Start before End or End before Start).

Value of GetDetails (Type of query)	Parameters & Options Optional parameters are in brackets ()	Result of query	Business rules on parameters
	(ExcludeDetected voyagesYes)	If no time period is defined, Central SSN will provide the list of latest [NumberOfCalls] consolidated PortPlus messages with ATAPortOfCall before SentAt. Hazmat information in results is as reported before arrival to the port.	Central SSN will consider the time period defined between the closest date and the farthest date. - Time period must be before SentAt, cannot be older than [SentAt – 60 days] and cannot be longer than 30 days. - If only StartDateTime or EndDateTime is provided, then SentAt value is considered for the missing one. - If none is provided, then NumberOfCalls is considered. - If NumberOfCalls is not provided, then default value "10" is considered. - NumberOfCalls cannot be more than 50. - If StartDateTime or EndDateTime is provided, then NumberOfCalls is not considered. Notes: This query should use reported and detected entries. The response should differentiate reported and detected information.
ExpectedShipCallsAtEUPort	PortOfCall (StartDateTime) (EndDateTime) (NumberOfCalls)	Central SSN will provide the list of ship calls: - With ETAToPortOfCallwithin the time period defined by StartDateTime and EndDateTime, and - Without ATAPortOfCall. If no time period is defined, Central SSN will provide the list of [NumberOfCalls] correlated voyages: - With ETAToPortOfCallafter SentAt, and - Without ATAPortOfCall. Hazmat information in results is as valid before arrival to the port.	- PortOfCall must be provided. - PortOfCall = "ZZUKN" is not allowed. - StartDateTime and EndDateTime may be used in any order (Start before End or End before Start). Central SSN will consider the time period defined between the closest date and the farthest date. - Time period must be after SentAt, must be within [SentAt + 60 days] and cannot be longer than 30 days. - If only StartDateTime or EndDateTime is provided, then SentAt value is considered for the missing one. - If none is provided, then NumberOfCalls is considered .

Value of GetDetails (Type of query)	Parameters & Options Optional parameters are in brackets ()	Result of query	Business rules on parameters
			<ul style="list-style-type: none"> - If NumberOfCalls is not provided, then default value "500" is considered. - If StartDateTime or EndDateTime is provided, then NumberOfCalls is not considered. <p>Notes:</p> <p>For SEG it is better to ensure results completeness rather than having a longer time period. Max number of port call should be 500. Max. Duration would be 2 days.</p>
CurrentShipCallsAtEUPort	PortOfCall (StartDateTime) (ExcludeDetected voyagesYes)	<p>Central SSN will provide the list of ship calls</p> <ul style="list-style-type: none"> - With PortOfCall = defined PortOfCall, and - With ATAPortOfCallafter StartDateTime, and - Without ATDPortOfCall. <p>Hazmat information in results is as reported before departure from the port.</p>	<ul style="list-style-type: none"> - PortOfCall must be provided. - PortOfCall = "ZZUKN" is not allowed. - StartDateTime must be between [SentAt - 30 days] and [SentAt]. - If StartDateTime is not provided, [SentAt - 30 days] is considered. <p>Notes:</p> <p>This query should use reported and detected entries. The response should differentiate reported and detected information.</p>
CompletedShipCallsAtEU Port	PortOfCall (StartDateTime) (ExcludeDetected voyagesYes)	<p>Central SSN will provide the list of ship calls:</p> <ul style="list-style-type: none"> - With PortOfCall = defined PortOfCall, and - With ATDPortOfCallafter StartDateTime. <p>Hazmat information in results is as reported before departure from the port.</p>	<ul style="list-style-type: none"> - PortOfCall must be provided. - PortOfCall = "ZZUKN" is not allowed. - StartDateTime must be between [SentAt - 30 days] and [SentAt] - If StartDateTime is not provided, [SentAt - 30 days] is considered <p>Notes:</p> <ol style="list-style-type: none"> 1. This query should use reported and detected entries. The response should differentiate

Value of GetDetails (Type of query)	Parameters & Options Optional parameters are in brackets ()	Result of query	Business rules on parameters
			<p>reported and detected information.</p> <p>2. Intrasoft to confirm if results on this query are limited also to 500. If yes, Use case for SEG would be for limit to 500 results for 7 days window</p>
LatestCallUpdates	<p>StartDateTime EndDateTime (ExcludeDetected voyagesYes)</p>	<p>Central SSN will provide the list of ship calls which were registered or updated within the specified time period.</p>	<p>- StartDateTime must be < EndDateTime - StartDateTime and EndDateTime must be between [SentAt - 24h - 5min] and [Sent At + 5min].</p> <p>Notes: This query should use reported and detected entries. The response should differentiate reported and detected information.</p>
ListExpectedCallsOfSelectedShip	<p>CSDID or IMONumber or MMSINumber (StartDateTime)</p>	<p>Central SSN will provide the list of ship calls: - Without ArrivalDetails element, and - With ETAToPortOfCallafter StartDateTime, and - Without ATAPortOfCall. Hazmat information in results is as valid before arrival to the port.</p>	<p>- CSDID or IMONumber or MMSINumber must be provided. - StartDateTime must be between [SentAt] and [SentAt + 30 days] - If StartDateTime is not provided, SentAt value is considered</p>
SelectedShipCall	<p>ShipCallId (GetHazmat) (GetWaste) (GetSecurity) (GetBunkers)</p>	<p>Central SSN will provide the ship call with the specified ShipCallId. Hazmat or Bunkers information in results is as reported before arrival to the port.</p>	<p>ShipCallId is mandatory</p>
GetActiveHazmatForSelectedShip	<p>CSDID or IMONumber or MMSINumber GetHazmat (StartDateTime)</p>	<p>Central SSN will provide the most relevant ship call and associated hazmat details which are active at StartDateTime. Information may come from different PortPlus messages (different values of ShipCallId).</p>	<p>- CSDID or IMONumber or MMSINumber must be provided. - StartDateTime must be between [SentAt - 7 days] and [SentAt + 7 days] - If StartDateTime is not provided, SentAt value is considered</p>

Value of GetDetails (Type of query)	Parameters & Options Optional parameters are in brackets ()	Result of query	Business rules on parameters
		See section "Business rules for the definition of "active" information" below.	
GetActiveSecurityForSelectedShip	CSDID or IMONumber or MMSINumber GetSecurity (StartDateTime)	Central SSN will provide the most relevant ship call and associated security details. - without ATDPortOfCall and - with closest ETAToPortOfCall or ATAPortOfCall to StartDateTime	- CSDID or IMONumber or MMSINumber must be provided. - StartDateime must be between [SentAt - 7 days] and [SentAt + 7 days] - If StartDateime is not provided, SentAt value is considered
GetActiveWasteForSelectedShip	CSDID or IMONumber or MMSINumber GetWaste (StartDateTime)	Central SSN will provide the most relevant ship calls and associated waste details. - without ATDPortOfCall and - with closest ETAToPortOfCall or ATAPortOfCall to StartDateTime	- CSDID or IMONumber or MMSINumber must be provided. - StartDateime must be between [SentAt - 7 days] and [SentAt + 7 days] - If StartDateime is not provided, SentAt value is considered
GetActiveBunkersForSelectedShip	CSDID IMONumber or MMSINumber GetBunkers (StartDateTime)	or Central SSN will provide the most relevant ship call and associated Bunkers details which are active at StartDateime. Information may come from different PortPlus messages (different values of ShipCallId). See section "Business rules for the definition of "active" information" below.	- IMONumber or MMSINumber must be provided. - StartDateime must be between [SentAt - 7 days] and [SentAt + 7 days] - If StartDateime is not provided, SentAt value is considered

Queries specifically implemented for SEG WUP/ SEG

Value of GetDetails (Type of query)	Parameters & Options Optional parameters are in brackets ()	Result of query	Business rules on parameters ¹
GetCurrentVoyageOfSelected Ship	CSDID or IMONumber or MMSINumber (StartDateTime) (GetHazard) (GetWaste) (GetSecurity) (GetBunkers) (ExcludeDetected voyagesYes)	This query enables the retrieval of the shipcall associated to the current voyage of the ship. Hazard or Bunkers information in results is as reported before arrival to the port.	- CSDID or IMONumber or MMSINumber must be provided - StartDate must be between [SentAt - 30 days] and [SentAt + 30 days] - If StartDate is not provided, SentAt value is considered Notes: This query should use reported and detected entries. The response should differentiate reported and detected information.
GetAllReportedVoyagesOfSelectedShip	CSDID or IMONumber or MMSINumber (StartDateTime) (EndDateTime) (ExcludeDetected voyagesYes)	<u>The results should be arranged in the descending order, meaning that the 10 voyages closest to the end of the time criteria window will be considered as follows:</u> - in the past the last 10 voyages (and not the 10 oldest voyages). - in the future 10 voyages closest to the current time	<u>The query timeframe should allow to use parameters as far back as the SentAt-2*WVD (WorldVoyageDuration, currently defined as 30 days in SSN application settings page) and as far in the future as SentAt+2*WVD. To safeguard performance the number of records returned may be limited to 10.</u> Notes: This query should use reported and detected entries. The response should differentiate reported and detected information.
GetCurrentAndPreviousVoyageOfSelectedShipAtTimeStamp	Ship CSDID orIMO or MMSI TimeStamp related to the request (ExcludeDetected voyagesYes)	This query enables the retrieval of two voyages based on data reported from MS or detected data from STAR The "active" at timestamp and the most recently closed before the timestamp	CSDID or IMONumber or MMSINumber must be provided ETAPortOfCall > [QueryTimeStamp] OR NVL(ATDPortOfCall, ETDPortOfCall) < QueryTimeStamp

¹ Criteria shall be re-assessed during design and finally agreed at that stage

Value of GetDetails (Type of query)	Parameters & Options Optional parameters are in brackets ()	Result of query	Business rules on parameters ¹
		Hazmat summary information in results for each call is as valid before arrival to the port.	Notes: This query should use reported and detected entries. The response should differentiate reported and detected information.
GetVoyageforSSNVoygeID	SSNVoyageID (GetHazmat) (GetWaste) (GetSecurity) (GetBunkers)	Central SSN will provide the ship call linked to the voyage with the specified SSNVoyageID Hazmat or Bunkers information in results is as reported before arrival to the port.	SSNVoyageID is mandatory
GetExpectedandLastTenCalls	Ship CSDID orIMO or MMSI (StartDateTime) (ExcludeDetected voyagesYes)	Last x (configurable via a parameter transmitted in the request message, default value is 10 if criterion no defined) shipCall of the ship (if available information exist in EIS) and planned 10 ship calls for a vessel (if available information exist in EIS). As criterion shall be given its CSDID as specified in SSNENR_FSEG_REQ_5.	- CSDID or IMONumber or MMSINumber must be provided. - StartDateime must be between [SentAt - 30 days] and [SentAt + 30 days] - If StartDateime is not provided, SentAt value is considered Notes: 1. This query should use reported and detected entries. The response should differentiate reported and detected information. 2. Results should include the last x, current, and next x shipcalls
LatestCallUpdatesWithWaste	StartDateime EndDateime (ExcludeDetected voyagesYes)	Central SSN will provide the list of ship calls with all waste information, if registered in SSN EIS notification database, which were registered or updated within the specified time period.	- StartDateime must be < EndDateime - StartDateime and EndDateime must be between [SentAt - 11m] and [Sent At]. Notes: This query should use reported and detected entries. The response should differentiate reported and detected information.

3.2.3.4 Example message(s)

The following examples illustrate the details of request messages of the ES2SSN_ShipCall_Req.xml type:

```
<?xml version="1.0" encoding="UTF-8"?>
<ES2SSN_ShipCall_Req xmlns="urn:eu.emsa.ssn.voyage" xmlns:ssn="urn:eu.emsa.ssn"
xmlns:xsi="http://www.w3.org/2001/XMLSchema-instance" xsi:schemaLocation="urn:eu.emsa.ssn.voyage
seg_4_0.xsd">
  <Header ESRefId="ShipCall_Req_20180108_1" From="SEG" SentAt="2018-01-08T11:00:00"
TimeoutValue="60" To="SafeSeaNet" Version="4.0"/>
  <Body>
    <RequestOriginator OriginatorID="thanosId"/>
    <RequiredResponseCriteria>
      <ShipCallResp GetDetails="GetActiveWasteForSelectedShip" GetWaste="WasteDetails"/>
      <SearchCriteria>
        <ShipIdentificationCriteria IMONumber="9354284"/>
      </SearchCriteria>
    </RequiredResponseCriteria>
  </Body>
```

3.2.4 SSN2ES_ShipCall_Res.xml message

3.2.4.1 Message description

The following table describes the XML message used for the transaction.

Entities		Attributes	Oc c
Header			1
		Version	1
		TestId	0-1
		ESRefId	1
		SSNRefId	1
		SentAt	1
		From	1
		To	1
		StatusMessage	0-1
Body			0-1
	RequestOriginator		0-1
		OriginatorID	1
	ProvidedResponseCriteria		1
	ShipCallResp		1
		GetDetails	1
		GetHazmat	0-1

Entities		Attributes	Occ
		GetWaste	0-1
		GetSecurity	0-1
		GetBunkers	0-1
		SearchCriteria	1
		TimePeriodCriteria	0-1
		StartDateTime	0-1
		EndDateTime	0-1
		ShipIdentificationCriteria	0-1
		CSDID	0-1
		IMONumber	0-1
		MMSINumber	0-1
		PortOfCallIdentificationCriteria	0-1
		PortOfCall	1
		AdditionalVoyageCriteria	0-1
		ShipCallId	0-1
		SSNVoyageID	0-1
		NumberOfCalls	0-1
		NumberOfExpectedAndLastCalls	0-1
		ExcludeDetectedVoyagesYes	0-1
		QueryResults	0-1
		PortPlusNotificationList	0- ∞
		Source	1
		ProviderOfLastUpdate	1
		LastUpdateReceivedAt	1
		VesselIdentification	1
		CSDID	1
		IMONumber	0-1
		MMSINumber	0-1
		CallSign	0-1
		ShipName	0-1
		Flag	0-1
		IR_Number	0-1
		VoyageInformation	1
		ShipCallId	1
		LastPort	0-1
		PortOfCall	1
		PositionInPortOfCall	0-1
		PortFacilityLocode	0-1

Entities			Attributes	Oc c
			PortFacility	0-1
			ETDfromLastPort	0-1
			ETAToPortOfCall	0-1
			ETDFromPortOfCall	0-1
			NextPort	0-1
			ETAToNextPort	0-1
			BriefCargoDescription	0-1
			SSNVoyageID	1
			Detected	1
		PurposeOfCall		0-9
			CallPurposeCode	1
		VesselDetails		0-1
			GrossTonnage	0-1
			ShipType	0-1
		InmarsatCallNumber		0-5
			Inmarsat	1
		CertificateOfRegistry		0-1
			IssueDate	0-1
			CertificateNumber	0-1
		PortOfRegistry		0-1
			LoCode	0-1
			LocationName	0-1
		Company		0-1
			CompanyName	0-1
			IMOCompanyNr	0-1
		PreArrival3DaysNotificationDetails		0-1
			PossibleAnchorage	0-1
			PlannedOperations	0-1
			PlannedWorks	0-1
			ShipConfiguration	0-1
			CargoVolumeNature	0-1
			ConditionCargoBallastTanks	0-1
		PreArrival24HoursNotificationDetails		0-1
			POBVoyageTowardsPortOfCall	1
		ArrivalNotificationDetails		0-1
			ATAPortOfCall	1
			Anchorage	0-1
		DepartureNotificationDetails		0-1
			ATDPortOfCall	0-1

Entities			Attributes	Oc c
			POBVoyageTowardsNextPort	0-1
			HazmatConfirmation	1
			HazmatOnBoardYorN	1
			WasteConfirmation	0-1
			LastPortDelivered	0-1
			LastPortDeliveredDate	0-1
			WasteDeliveryStatus	1
			SecurityConfirmation	0-1
			CurrentSecurityLevel	1
			AgentInPortAtArrival	0-1
			AgentName	1
			Phone	0-1
			Fax	0-1
			EMail	0-1
			BunkersConfirmation	0-1
			BunkersReportedYorN	1
			WasteInformation	0-1
			WasteSummary	0-1
			LastPortDelivered	0-1
			LastPortDeliveredDate	0-1
			WasteDeliveryStatus	1
			WasteDetails	0-1
			Source	1
			ProviderOfLastUpdate	1
			LastUpdateReceivedAt	1
			ShipCallId	1
			WasteItem	0- ∞
			PortDeliveryRemainingWaste	0-1
			WasteType	1
			WasteCode	1
			WasteDescription	0-1
			ToBeDelivered	1
			UnitOfMeasurement	1
			Quantity	1
			MaxStorage	0-1
			UnitOfMeasurement	1
			Quantity	1
			RetainedOnBoard	0-1

Entities						Attributes	Oc c
						UnitOfMeasurement	1
						Quantity	1
						EstimateGenerated	0-1
						UnitOfMeasurement	1
						Quantity	1
						DeliveredAtLastPort	0-1
						UnitOfMeasurement	1
						Quantity	1
						PortPlusNotificationDetails	0-1
						Exemptions	0-1
						ExemptionDetails	1-n
						ExemptionType	1
						CompanyName	1
						DateFrom	1
						DateTo	1
						Route	1- ∞
						Port	1
						ExemptedWasteTypes	0- ∞
						WasteCode	1
						WasteDescription	0-1
						ExemptionAppliesTo	0- ∞
						Port	1
						ExemptedPortFacilities	0- ∞
						PortFacilityLocode	1
						PortFacility	1
						Authority	1
						Country	1
						AuthorityType	1
						AuthorityName	1
						Contact24/7	1
						FirstName	0-1
						LastName	0-1
						LoCode	0-1
						Phone	0-1
						Fax	0-1
						EEmail	0-1

Entities			Attributes	Occ	
			HazmatInformation		0-1
			HazmatSummary		0-1
				INFShipClass	0-1
				DG	0-99
				DGClassification	1
			HazmatDetails		0-1
			Source		1
				ProviderOfLastUpdate	1
				LastUpdateReceivedAt	1
				ShipCallId	1
			CargoInformation		1
			Consignment		0-∞
				TransportDocumentID	0-1
				PortOfLoading	0-1
				PortOfDischarge	0-1
			DPGItem		1-∞
				DGClassification	1
				TextualReference	1
				IMOHazardClass	0-1
				UNNumber	0-1
				PackingGroup	0-1
				FlashPoint	0-1
				MarpolCode	0-1
				PackageType	0-1
				TotalNrOfPackages	0-1
				AdditionalInformation	0-1
			EmS		0-5
				EmSNumber	1
			SubsidiaryRisks		0-5
				SubsidiaryRisk	1
			TotalQuantityGross		0-1
				UnitOfMeasurement	1
				Quantity	1
			TotalQuantityNet		0-1
				UnitOfMeasurement	1
				Quantity	1

Entities					Attributes	Occ
					TransportEquipmentUnit	0-∞
					TransUnitId	1
					LocationOnBoard	1
					NoOfPackages	0-1
					QuantityGross	0-1
					UnitOfMeasurement	1
					Quantity	1
					QuantityNet	0-1
					UnitOfMeasurement	1
					Quantity	1
					NonTransportEquipmentUnit	0-∞
					LocationOnBoard	1
					NoOfPackages	0-1
					QuantityGross	0-1
					UnitOfMeasurement	1
					Quantity	1
					QuantityNet	0-1
					UnitOfMeasurement	1
					Quantity	1
					CargoManifest	0-1
					UrlDetails	0-1
					Url	1
					DocType	1
					ContactDetails	0-1
					LastName	0-1
					FirstName	0-1
					LoCode	0-1
					Phone	1
					Fax	0-1
					EEmail	0-1
					WasteInformation	0-1
					WasteSummary	0-1
					LastPortDelivered	0-1
					LastPortDeliveredDate	0-1
					WasteDeliveryStatus	1
					WasteDetails	0-1
					Source	1
					ProviderOfLastUpdate	1

Entities				Attributes	Occ
				LastUpdateReceivedAt	1
				ShipCallId	1
				WasteItem	0-∞
				PortDeliveryRemainingWaste	0-1
				WasteType	1
				WasteCode	1
				WasteDescription	0-1
				ToBeDelivered	1
				UnitOfMeasurement	1
				Quantity	1
				MaxStorage	0-1
				UnitOfMeasurement	1
				Quantity	1
				RetainedOnBoard	0-1
				UnitOfMeasurement	1
				Quantity	1
				EstimateGenerated	0-1
				UnitOfMeasurement	1
				Quantity	1
				DeliveredAtLastPort	0-1
				UnitOfMeasurement	1
				Quantity	1
				SecurityInformation	0-1
				SecuritySummary	0-1
				CurrentSecurityLevel	1
				AgentInPortAtArrival	0-1
				AgentName	1
				Phone	0-1
				Fax	0-1
				E-Mail	0-1
				SecurityDetails	0-1
				ValidISSC	1
				ReasonForNoValidISSC	0-1
				ApprovedSecurityPlan	1
				SecurityRelatedMatterToReport	0-1
				Source	1
				ProviderOfLastUpdate	1
				LastUpdateReceivedAt	1

Entities				Attributes	Occ
				ShipCallId	1
				CSO	1
				FirstName	0-1
				LastName	1
				Phone	0-1
				Fax	0-1
				EMail	0-1
				ISSC	0-1
				ISSCType	1
				IssuerType	0-1
				Issuer	1
				ExpiryDate	1
				PreviousCallAtPortFacility	0- ∞
				Port	1
				DateOfArrival	1
				DateOfDeparture	1
				PortFacilityLocode	0-1
				PortFacility	1
				SecurityLevel	1
				SpecialOrAdditionalSecurityMeasure s	0-1
				ShipToShipActivity	0- ∞
				DateFrom	1
				DateTo	1
				Activity	1
				SecurityMeasures	0-1
				Location	1
				LoCode	0-1
				Latitude	0-1
				Longitude	0-1
				LocationName	0-1
			BunkersInformation		0-1
				BunkerItem	1-∞
				BunkerType	1
				BunkerDescription	0-1
				Quantity	1
				UnitOfMeasurement	1

3.2.4.2 Business rules

The following rules apply to the SSN2ES_ShipCall_Resmessage:

No.	General Rule applicable to the SSN2ES_ShipCall_Res message
1	<p>When details from a ship call regarding notifications (hazmat, waste or security) are requested and SSN Central holds information regarding a relevant exemption for such notification, SSN Central indicates in the result the information it holds regarding the exemption. An exemption is considered as relevant for a ship call if:</p> <ul style="list-style-type: none"> - it applies to the ship, - its list of exempted ports includes the Port Of Call, and - its validity period covers the ATAPortOfCall or the ETAToPortOfCall in the case of pre-arrival notifications and covers the ATDPortOfCall or the ETDFromPortOfCall in the case of notifications at departure.

The following table describes the XML message used for the transaction and the applicable business rules.

Item (element or sub-element or specific attribute)	Occ	Description
Header	1	
Version	1	
TestId	0-1	
ESRefId	1	This is the ESRefId as in the ES2SSN_ShipCall_Req.xml message
SSNRefId	1	The SSNRefId is unique
SentAt	1	
From	1	
To	1	
StatusCode	1	
StatusMessage	0-1	
Body	0-1	Mandatory unless StatusCode="InvalidFormat"
RequestOriginator	0-1	
OriginatorID	1	
ProvidedResponseCriteria	1	It defines the query as received by SSN. Content is as in the ES2SSN_ShipCall_Req.xml message
ShipCallResp	1	
GetDetails	1	
GetHazmat	0-1	
GetWaste	0-1	
GetSecurity	0-1	
GetBunkers	0-1	
SearchCriteria	1	
TimePeriodCriteria	0-1	
StartDateTime	0-1	
EndDateTime	0-1	
ShipIdentificationCriteria	0-1	
CSDID	0-1	
IMONumber	0-1	

Item (element or sub-element or specific attribute)	Occ	Description
MMSINumber	0-1	
PortOfCallIdentificationCriteria	0-1	
PortOfCall	1	
AdditionalVoyageCriteria	0-1	
ShipCallId	0-1	
SSNVoyageID	0-1	
NumberOfCalls	0-1	
NumberOfExpectedAndLastCalls	0-1	
ExcludeDetectedVoyagesYes	0-1	
QueryResults	0-1	<ul style="list-style-type: none"> - It includes the results of the query as defined in the ES2SSN_ShipCall_Req.xml message. - Not provided if the query has no result.
PortPlusNotificationList	0-∞	<ul style="list-style-type: none"> - These are the matching ship calls. Depending on the query, this may be a unique ship call or several. - Each record provides the latest consolidated PortPlus notification stored in central SSN system corresponding to the ShipCallId.
Source	1	
ProviderOfLastUpdate	1	As indicated in the From attribute of the latest PortPlus notification
LastUpdateReceivedAt	1	Date and time of receipt of the latest PortPlus notification
VesselIdentification	1	
CSDID	1	
IMONumber	0-1	
MMSINumber	0-1	
CallSign	0-1	
ShipName	0-1	
Flag	0-1	
IR_Number	0-1	
VoyageInformation	1	
ShipCallId	1	
LastPort	0-1	
PortOfCall	1	
PositionInPortOfCall	0-1	
PortFacilityLocode	0-1	
PortFacility	0-1	
ETDFromLastPort	0-1	
ETAToPortOfCall	0-1	
ETDFromPortOfCall	0-1	

<i>Item</i> <i>(element or sub-element or specific attribute)</i>	<i>Occ</i>	<i>Description</i>
NextPort	0-1	
ETAToNextPort	0-1	
BriefCargoDescription	0-1	
SSNVoyageID	1	
Detected	1	
PurposeOfCall	0-9	
CallPurposeCode	1	
VesselDetails	0-1	
GrossTonnage	0-1	
ShipType	0-1	
InmarsatCallNumber	0-5	
Inmarsat	1	
CertificateOfRegistry	0-1	
IssueDate	0-1	
CertificateNumber	0-1	
PortOfRegistry	0-1	
LoCode	0-1	
LocationName	0-1	
Company	0-1	
CompanyName	0-1	
IMOCompanyNr	0-1	
PreArrival3DaysNotificationDetails	0-1	
PossibleAnchorage	0-1	
PlannedOperations	0-1	
PlannedWorks	0-1	
ShipConfiguration	0-1	
CargoVolumeNature	0-1	
ConditionCargoBallastTanks	0-1	
PreArrival24HoursNotificationDetails	0-1	
POBVoyageTowardsPortOfCall	1	
ArrivalNotificationDetails	0-1	
ATAPortOfCall	1	
Anchorage	0-1	
DepartureNotificationDetails	0-1	
ATDPortOfCall	0-1	
POBVoyageTowardsNextPort	0-1	
HazmatConfirmation	1	

<i>Item</i> <i>(element or sub-element or specific attribute)</i>	<i>Occ</i>	<i>Description</i>
HazmatOnBoardYorN	1	latest update of the attribute registered in SSN EIS notification database for the voyage towards the PortOfCall identified in the voyage element of this response message
WasteConfirmation	0-1	
LastPortDelivered	0-1	
LastPortDeliveredDate	0-1	
WasteDeliveryStatus	1	
SecurityConfirmation	0-1	
CurrentSecurityLevel	1	
AgentInPortAtArrival	0-1	
AgentName	1	
Phone	0-1	
Fax	0-1	
EMail	0-1	
BunkersConfirmation	0-1	
BunkersReportedYorN	1	latest update of the attribute registered in SSN EIS notification database for the voyage towards the PortOfCall identified in the voyage element of this response message
WasteInformation	0-1	latest update registered in Central SSN System notification database for the voyage towards the PortOfCall identified in the voyage element
WasteSummary	0-1	
LastPortDelivered	0-1	
LastPortDeliveredDate	0-1	
WasteDeliveryStatus	1	
WasteDetails	0-1	
Source	1	
ProviderOfLastUpdate	1	
LastUpdateReceivedAt	1	
ShipCallId	1	
WasteItem	0-∞	
PortDeliveryRemainingWaste	0-1	
WasteType	1	
WasteCode	1	
WasteDescription	0-1	
ToBeDelivered	1	
UnitOfMeasurement	1	
Quantity	1	
MaxStorage	0-1	

Item (element or sub-element or specific attribute)	Occ	Description
UnitOfMeasurement	1	
Quantity	1	
RetainedOnBoard	0-1	
UnitOfMeasurement	1	
Quantity	1	
EstimateGenerated	0-1	
UnitOfMeasurement	1	
Quantity	1	
DeliveredAtLastPort	0-1	To become mandatory following V3-V4 transition period,
UnitOfMeasurement	1	
Quantity	1	
PortPlusNotificationDetails	0-1	<ul style="list-style-type: none"> - Provided only if the query included the GetHazmat, GetWaste, GetSecurity or GetBunkers attributes. (Query result is a unique ship call) - It includes the detailed or summary Hazmat, Waste, Security and Bunkers information, and information on exemptions.
Exemptions	0-1	This is the details of relevant exemptions recorded for that ship in the Central SSN System (see general business rules above)
ExemptionDetails	1-n	
ExemptionType	1	
CompanyName	1	
DateFrom	1	
DateTo	1	
Route	1-∞	
Port	1	
ExemptedWasteTypes	0-∞	
WasteCode	1	
WasteDescription	0-1	
ExemptionAppliesTo	0-∞	
Port	1	
ExemptedPortFacilities	0-∞	
PortFacilityLocode	1	
PortFacility	1	
Authority	1	
Country	1	
AuthorityType	1	
AuthorityName	1	
Contact24/7	1	

Item (element or sub-element or specific attribute)	Occ	Description
FirstName	0-1	
LastName	0-1	
Locode	0-1	
Phone	0-1	
Fax	0-1	
EMail	0-1	
HazmatInformation	0-1	<ul style="list-style-type: none"> - Provided if GetHazmat is included. - If GetHazmat = "HazmatSummary", this is the latest update registered in Central SSN System notification database for the voyage towards the PortOfCall identified in the voyage element - If GetHazmat = "HazmatDetails", this is the Hazmat details as provided by the relevant NCA on request.
HazmatSummary	0-1	
INFShipClass	0-1	
DG	0-99	
DGClassification	1	
HazmatDetails	0-1	Provided if GetHazmat = "HazmatDetails".
Source	1	
ProviderOfLastUpdate	1	
LastUpdateReceivedAt	1	
ShipCallId	1	
CargoInformation	1	
Consignment	0-∞	
TransportDocumentID	0-1	
PortOfLoading	0-1	
PortOfDischarge	0-1	
DPGItem	1-∞	
DGClassification	1	
TextualReference	1	
IMOHazardClass	0-1	
UNNumber	0-1	
PackingGroup	0-1	
FlashPoint	0-1	
MarpolCode	0-1	
PackageType	0-1	
TotalNrOfPackages	0-1	
AdditionalInformation	0-1	
EmS	0-5	
EmSNumber	1	
SubsidiaryRisks	0-5	
SubsidiaryRisk	1	
TotalQuantityGross	0-1	
UnitOfMeasurement	1	
Quantity	1	

Item (element or sub-element or specific attribute)	Occ	Description
TotalQuantityNet	0-1	
UnitOfMeasurement	1	
Quantity	1	
TransportEquipmentUnit	0-∞	
TransUnitId	1	
LocationOnBoard	1	
NoOfPackages	0-1	
QuantityGross	0-1	
UnitOfMeasurement	1	
Quantity	1	
QuantityNet	0-1	
UnitOfMeasurement	1	
Quantity	1	
NonTransportEquipmentUnit	0-∞	
LocationOnBoard	1	
NoOfPackages	0-1	
QuantityGross	0-1	Mandatory if <i>QuantityNet</i> not present.
UnitOfMeasurement	1	
Quantity	1	
QuantityNet	0-1	Mandatory if <i>QuantityGross</i> not present.
UnitOfMeasurement	1	
Quantity	1	
CargoManifest	0-1	This is the detailed information on the polluting and dangerous cargo manifest, as in the latest consolidated PortPlus notification stored in central SSN system corresponding to the ShipCallId. The cargo manifest is available either as a document on a web server or via a phone/fax/Email.
UrlDetails	0-1	Mandatory if ContactDetails is not provided
Url	1	Provides a URL located at central SSN server masking the original URL provided in the PortPlus Notification of the data provider. The data requestor system may utilise this URL to communicate (in 2-way SSL) with the central SSN system and download the document with the Hazmat details.
DocType	1	
ContactDetails	0-1	Mandatory if UrlDetails is not provided
LastName	0-1	
FirstName	0-1	
LoCode	0-1	
Phone	1	
Fax	0-1	
EMail	0-1	
WasteInformation	0-1	<ul style="list-style-type: none"> - Provided if GetWaste is included. - If GetWaste = "WasteSummary", this the latest update registered in Central

Item (element or sub-element or specific attribute)	Occ	Description
		SSN System notification database for the voyage towards the PortOfCall identified in the voyage element - If GetWaste = "WasteDetails", this is the Waste details as provided by the relevant NCA on request.
WasteSummary	0-1	
LastPortDelivered	0-1	
LastPortDeliveredDate	0-1	
WasteDeliveryStatus	1	
WasteDetails	0-1	Provided if GetWaste = "WasteDetails".
Source	1	
ProviderOfLastUpdate	1	
LastUpdateReceivedAt	1	
ShipCallId	1	
WasteItem	0-∞	
PortDeliveryRemainingWaste	0-1	
WasteType	1	
WasteCode	1	
WasteDescription	0-1	
ToBeDelivered	1	
UnitOfMeasurement	1	
Quantity	1	
MaxStorage	0-1	
UnitOfMeasurement	1	
Quantity	1	
RetainedOnBoard	0-1	
UnitOfMeasurement	1	
Quantity	1	
EstimateGenerated	0-1	
UnitOfMeasurement	1	
Quantity	1	
DeliveredAtLastPort	0-1	To become mandatory following V3-V4 transition period,
UnitOfMeasurement	1	
Quantity	1	
SecurityInformation	0-1	- Provided if GetSecurity is included. - If GetSecurity = "SecuritySummary", this the latest update registered in Central SSN System notification database for the voyage towards the PortOfCall identified in the voyage element - If GetSecurity = "SecurityDetails", this is the Security details as provided by the relevant NCA on request.
SecuritySummary	0-1	
CurrentSecurityLevel	1	
AgentInPortAtArrival	0-1	
AgentName	1	
Phone	0-1	
Fax	0-1	
EEmail	0-1	

<i>Item</i> <i>(element or sub-element or specific attribute)</i>	<i>Occ</i>	<i>Description</i>
SecurityDetails	0-1	Provided if GetSecurity = "SecurityDetails".
ValidISSC	1	
ReasonForNoValid ISSC	0-1	
ApprovedSecurityPlan	1	
SecurityRelatedMatterToReport	0-1	
Source	1	
ProviderOfLastUpdate	1	
LastUpdateReceivedAt	1	
ShipCallId	1	
CSO	1	
FirstName	0-1	
LastName	1	
Phone	0-1	
Fax	0-1	
EMail	0-1	
ISSC	0-1	
ISSCType	1	
IssuerType	0-1	
Issuer	1	
ExpiryDate	1	
PreviousCallAtPortFacility	0-∞	
Port	1	
DateOfArrival	1	
DateOfDeparture	1	
PortFacilityLocode	0-1	
PortFacility	1	
SecurityLevel	1	
SpecialOrAdditionalSecurityMeasures	0-1	
ShipToShipActivity	0-∞	
DateFrom	1	
DateTo	1	
Activity	1	
SecurityMeasures	0-1	
Location	1	
LoCode	0-1	
Latitude	0-1	
Longitude	0-1	
LocationName	0-1	
BunkersInformation	0-1	<ul style="list-style-type: none"> - Provided if GetBunkers is included. - GetBunkers = "BunkersDetails", this is the Bunkers details as provided by the relevant NCA on request.
BunkerItem	1-∞	
BunkerType	1	
BunkerDescription	0-1	
Quantity	1	
UnitOfMeasurement	1	

3.2.4.3 Example message(s)

The following example illustrates the details of request messages of the SSN2ES_ShipCall_Res.xml type:

```
<?xml version="1.0" encoding="UTF-8"?>
<SSN2ES_ShipCall_Res xmlns="urn:eu.emsa.ssn.voyage" xmlns:ssn="urn:eu.emsa.ssn"
xmlns:xsi="http://www.w3.org/2001/XMLSchema-instance" xsi:schemaLocation="urn:eu.emsa.ssn.voyage
seg_4_0.xsd">
  <Header ESRefId="ShipCall_Req_20180108_2" From="SafeSeaNet" SSNRefId="ShipCall_Req_20180108_2"
SentAt="2001-12-31T12:00:00" StatusCode="OK" To="SEG" Version="4.0"/>
  <Body>
    <RequestOriginator OriginatorID="thanosId"/>
    <ProvidedResponseCriteria>
      <ShipCallResp GetDetails="GetActiveWasteForSelectedShip" GetWaste="WasteDetails"/>
      <SearchCriteria>
        <ShipIdentificationCriteria IMONumber="9354284"/>
      </SearchCriteria>
    </ProvidedResponseCriteria>
    <QueryResults>
      <PortPlusNotificationList>
        <Source ProviderOfLastUpdate="GRPIR01" LastUpdateReceivedAt="2017-12-
15T08:53:12Z"/>
        <VesselIdentification CSDID="12653" IMONumber="9354284"
MMSINumber="276673000" CallSign="ESCK" ShipName="BALTIC PRINCESS"/>
        <VoyageInformation ShipCallId="SSN_EIS_PP_20171128" LastPort="PTSET"
PortOfCall="GRLAV" PositionInPortOfCall="marine" ETDFromLastPort="2017-12-13T16:35:22Z"
ETAToPortOfCall="2018-01-22T14:35:22Z" NextPort="PTLIS" ETAToNextPort="2017-12-16T16:35:22Z"
ETDFromPortOfCall="2017-12-15T16:35:22Z" Detected="0" SSNVoyageID="SSN_EIS_PP_20171128#GR"/>
        <PreArrival3DaysNotificationDetails CargoVolumeNature="fuel"
PlannedOperations="unloading" PlannedWorks="Maintenance" ConditionCargoBallastTanks="inerted"
PossibleAnchorage="Y" ShipConfiguration="SHT"/>
        <PreArrival24HoursNotificationDetails POBVoyageTowardsPortOfCall="123"/>
        <HazmatConfirmation HazmatOnBoardYorN="Y"/>
        <WasteConfirmation LastPortDelivered="GR000" LastPortDeliveredDate="2017-
12-13Z" WasteDeliveryStatus="All"/>
        <BunkersConfirmation BunkersReportedYorN="Y"/>
      </PortPlusNotificationList>
      <PortPlusNotificationDetails>
        <ssn:WasteInformation>
          <ssn:WasteSummary LastPortDelivered="GR000"
LastPortDeliveredDate="2017-12-13Z" WasteDeliveryStatus="All"/>
          <ssn:WasteDetails>
            <ssn:Source ProviderOfLastUpdate="thanosId"
LastUpdateReceivedAt="2017-08-07T10:00:00Z" ShipCallId="SSN_EIS_PP_20171128"/>
            <ssn:WasteItem PortDeliveryRemainingWaste="GRLAV">
              <ssn:WasteType WasteCode="1300"
WasteDescription="Waste oils"/>
              <ssn:ToBeDelivered UnitOfMeasurement="KGM"
Quantity="123.12"/>
            </ssn:WasteItem>
          </ssn:WasteDetails>
        </ssn:WasteInformation>
      </PortPlusNotificationDetails>
    </QueryResults>
  </Body>
</SSN2ES_ShipCall_Res>
```

```

Quantity="123.12"/>
Quantity="123.12"/>
Quantity="123.12"/>
Quantity="123.12"/>
</ssn:MaxStorage UnitOfMeasurement="KGM"
</ssn:RetainedOnBoard UnitOfMeasurement="KGM"
</ssn:EstimateGenerated UnitOfMeasurement="KGM"
</ssn:DeliveredAtLastPort UnitOfMeasurement="KGM"
</ssn:WasteItem>
</ssn:WasteDetails>
</ssn:WasteInformation>
</PortPlusNotificationDetails>
</QueryResults>
</Body>
</SSN2ES_ShipCall_Res>

```

3.3 Get Ship (MRS) Notification details

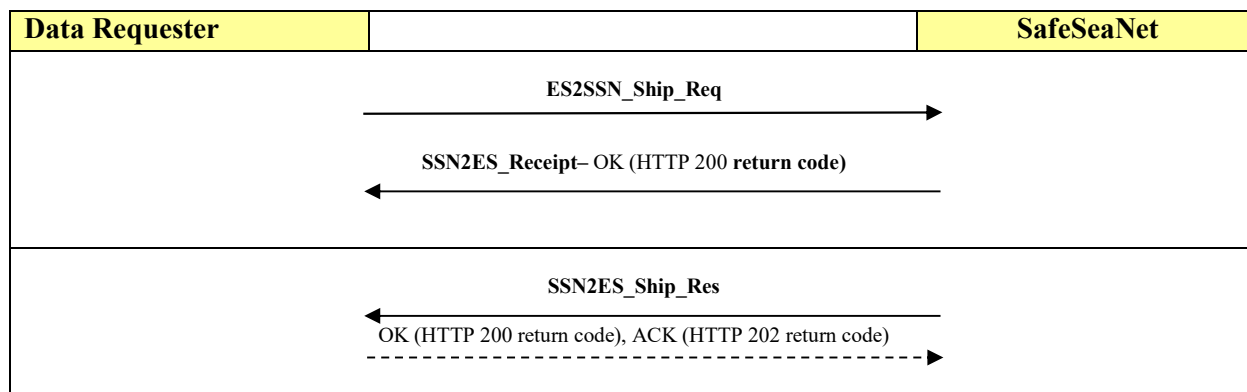
3.3.1 Introduction

The **ES2SSN_Ship_Req.xml** message is sent by a maritime application external to SSN EIS (e.g. STIRES, SEG or, if so decided, an MS application) (*data requester*) to SSN EIS application to request the latest ship notification details about a given vessel.

The **SSN2ES_Ship_Res.xml** message is the final response sent by SSNEIS to an external (to SSN EIS) application requesting the latest ship notification details about a given vessel.

3.3.2 Message Flow

The following figure outlines the expected asynchronous flow of XML messages related to this transaction:



3.3.3 ES2SSN_Ship_Req.xml message

3.3.3.1 Message description

The following table describes the XML message used for the transaction.

Entities	Attributes	Occ
----------	------------	-----

Header		1
	Version	1
	TestId	0-1
	ESRefId	1
	SentAt	1
	TimeoutValue	1
	From	1
	To	1
Body		1
	RequestOriginator	0-1
	OriginatorID	1
	SearchCriteria	1
	ShipNotType	1
	IMONumber	0-1
	MMSINumber	0-1
	MRSIdentification	0-1
	SenderCountryId	0-1

3.3.3.2 Business rules

The following table describes the XML message used for the transaction and the applicable business rules.

Item (element or sub-element or specific attribute)	Occ	Description
Header	1	
Version	1	
TestId	0-1	
ESRefId	1	The ESRefId must be unique.
SentAt	1	Format "YYYY-MM-DDThh:mm:ssTZD" Where TZD = time zone designator (Z or +hh:mm or -hh:mm).
TimeoutValue	1	
From	1	
To	1	
Body	1	
RequestOriginator	0-1	
OriginatorID	1	The user ID of the end-user who is the actual originator of the request submitted by SafeSeaNet Ecosystem GUI to EIS.
SearchCriteria	1	
ShipNotType	1	ShipNotType = MRS
IMONumber	0-1	Mandatory if <i>MMSINumber</i> not given.
MMSINumber	0-1	Mandatory if <i>IMONumber</i> not given.

Item (element or sub-element or specific attribute)	Occ	Description
MRSIdentification	0-1	Allowed for ShipNotType = MRS
SenderCountryId	0-1	This can be quoted to restrict the request to the Country sending the notification (identified by the Central SSN system on the basis of the attribute "From" in the notification)

3.3.3.3 Business rules for the query

ID	Ship type	notification	Information to be included in the RESPONSE message	Mandatory attributes to be quoted for accepting the REQUEST as valid	Optional attributes which can be quoted in the REQUEST
1	ShipNotType=MRS		<p>General rule: the query retrieves the latest MRS information available in SSN (on the basis of "ReportingDateAndTime") for a selected vessel (identified by the "IMONumber" and/or "MMSINumber")</p> <p>As a subcase of the above rule, the attribute "MRSIdentification" (optional) can be quoted to search the latest information for a specific MRS.</p> <p>The attribute "SenderCountryId" (optional) can be used to restrict the query to notifications sent by a specific MS.</p> <p>The response to this query (SSN2ES_Ship_Details_Res.xml) includes information from both notification and details. The details are provided via XML</p>	<p>- "ShipNotType",</p> <p>- "IMONumber" or "MMSINumber".</p>	<p>- "MRSIdentification"</p> <p>- "SenderCountryId"</p>

3.3.3.4 Example message(s)

The following examples illustrate the details of a request messages of the ES2SSN_Ship_Req.xml type:

```
<?xml version="1.0" encoding="UTF-8"?>
<ES2SSN_Ship_Req xmlns="urn:eu.emsa.ssn.voyage" xmlns:ssn="urn:eu.emsa.ssn"
xmlns:xsi="http://www.w3.org/2001/XMLSchema-instance" xsi:schemaLocation="urn:eu.emsa.ssn.voyage
seg_4_0.xsd">
  <Header ESRefId="SHIP_REQ_20180108_1" From="SEG" SentAt="2018-01-08T10:00:00"
TimeoutValue="60" To="SafeSeaNet" Version="4.0"/>
  <Body>
    <RequestOriginator OriginatorID="thanosId"/>
    <SearchCriteria IMONumber="9134256" MRSIdentification="ADRIREP" ShipNotType="MRS"/>
  </Body>
```

</ES2SSN_Ship_Req>

3.3.4 SSN2ES_Ship_Res.xml message

3.3.4.1 Message description

The following table describes the XML message used for the transaction.

Entities		Attributes	Occ
Header			1
		Version	1
		TestId	0-1
		ESRefId	1
		SSNRefId	1
		SentAt	1
		From	1
		To	1
		StatusCode	1
		StatusMessage	0-1
Body			0-1
	RequestOriginator		0-1
		OriginatorID	1
	SearchCriteria		1
		ShipNotType	1
		IMONumber	0-1
		MMSINumber	0-1
		MRSIdentification	0-1
		SenderCountryId	0-1
	NotificationDetails		0-1
		SentAt	1
		From	1
	VesselIdentification		1
		IMONumber	0-1
		MMSINumber	0-1
		CallSign	0-1
		ShipName	0-1
	VoyageInformation		0-1
		Longitude	1
		Latitude	1
		NextPortOfCall	1
		ETA	0-1
		TotalPersonsOnBoard	1

Entities			Attributes	Occ
		MRSNotificationDetails		0-1
			MRSInformation	1
			MRSIdentification	1
			CSTIdentification	0-1
		MRSVoyageInformation		1
			NextPortOfCall	1
			ETA	0-1
			TotalPersonsOnBoard	1
			AnyDG	1
			Longitude	1
			Latitude	1
			ReportingDateAndTime	1
		MRSDynamicInformation		1
			COG	1
			SOG	1
			NavigationalStatus	1
			Bunker	0-1
			Chars	1
			Quantity	1
		MRSCargoInformation		1
			CargoType	1
			DG	0-1
			AOI	0-1
			DGDetails	1-∞
			IMOCClass	0-1
			Quantity	1
			ContactDetails	0-1
			LastName	1
			FirstName	0-1
			LoCode	0-1
			Phone	0-1
			Fax	0-1
			EMail	0-1

3.3.4.2 Business rules

The following table describes the XML message used for the transaction and the applicable business rules.

Item (element or sub-element or specific attribute)	Occ	Description
Header	1	
Version	1	
TestId	0-1	
ESRefId	1	The ESRefId must be unique.
SSNRefId	1	The SSNRefId is unique.
SentAt	1	Format "YYYY-MM-DDThh:mm:ssTZD" Where TZD = time zone designator (Z or +hh:mm or -hh:mm).
From	1	
To	1	
StatusCode	1	
StatusMessage	0-1	
Body	0-1	Optional if StatusCode="InvalidFormat"
RequestOriginator	0-1	
OriginatorID	1	
SearchCriteria	1	
ShipNotType	1	From initial <i>ES2SSN_Ship_Req.xml</i> request
IMONumber	0-1	
MMSINumber	0-1	
MRSIdentification	0-1	
SenderCountryId	0-1	
NotificationDetails	0-1	
SentAt	1	Format "YYYY-MM-DDThh:mm:ssTZD" Where TZD = time zone designator (Z or +hh:mm or -hh:mm). Date and time indicating when the notification has been notified to SafeSeaNet. The value "SentAt" is also quoted in the attribute "ReportingDateAndTime" in case the notification provided is compliant to SSN v2
From	1	
VesselIdentification	1	
IMONumber	0-1	Mandatory if MMSI number is lacking.
MMSINumber	0-1	Mandatory if IMO number is lacking.
CallSign	0-1	none
ShipName	0-1	none
VoyageInformation	0-1	
Longitude	1	
Latitude	1	
NextPortOfCall	1	Location code of next port of call. It can be any LOCODE listed in the UNECE LOCODE list or any LOCODE listed in the specific EMSA locode list.
ETA	0-1	Format "YYYY-MM-DDThh:mm:ssTZD" Where TZD = time zone designator (Z or +hh:mm or -hh:mm). Date and time of the estimated time of arrival at next port of call.
TotalPersonsOnBoard	1	99999 if actually unknown.

<i>Item (element or sub-element or specific attribute)</i>	<i>Occ</i>	<i>Description</i>
MRSNotificationDetails	0-1	Mandatory if the ship notification is of type MRS.
MRSInformation	1	
MRSIdentification	1	It shall match the Search criteria if quoted
CSTIdentification	0-1	
MRSVoyageInformation	1	
NextPortOfCall	1	Location code of next port of call. . It can be any LOCODE listed in the UNECE LOCODE list or any LOCODE listed in the specific EMSA locode list.
ETA	0-1	Format "YYYY-MM-DDThh:mm:ssTZD" Where TZD = time zone designator (Z or +hh:mm or -hh:mm). Date and time of the estimated time of arrival at next port of call.
TotalPersonsOnBoard	1	99999 if actually unknown.
AnyDG	1	Possible values: "Y" or "N"
Longitude	1	
Latitude	1	
ReportingDateAndTime	1	Format "YYYY-MM-DDThh:mm:ssTZD" Where TZD = time zone designator (Z or +hh:mm or -hh:mm). Date and Time of reporting. This time stamp corresponds also to the given position.
MRSDynamicInformation	1	
COG	1	
SOG	1	
NavigationalStatus	1	
Bunker	0-1	Mandatory for ships of more 1000 gross tonnage.
Chars	1	
Quantity	1	Bunker estimated quantity
MRSCargoInformation	1	
CargoType	1	
DG	0-1	Element describing the dangerous/polluting goods on board. Mandatory if "AnyDG"="Y"
AOI	0-1	To provide detailed information about dangerous and polluting goods whenever the DGDDetails elements does not fit the reporting requirement (e.g. for reporting the oil cargo type, quantity, grades and density of heavy crude oil, heavy fuel oil , bitumen and tar as per WETREP requirements) . If other dangerous and polluting goods are carried simultaneously then DGDDetails element shall be quoted. This attribute can also be used for the other MRS to provide any other relevant information on dangerous and polluting goods.
DGDDetails	1-∞	
IMOCClass	0-1	Note: The value is as specified in the ShipCall messages for "IMOHazardClass" attribute.
Quantity	1	Quantity of DG
ContactDetails	0-1	Element indicating the address for the communication of cargo information
LastName	1	
FirstName	0-1	

Item (element or sub-element or specific attribute)	Occ	Description
LoCode	0-1	Location code of the contact person. Can be any LOCODE listed in the UNECE LOCODE list (i.e. not only LOCODES of ports) or any LOCODE listed in the SSN specific LOCODE list of EMSA
Phone	0-1	At least one contact detail must be provided (Phone, Fax or Email)
Fax	0-1	
EMail	0-1	

3.3.4.3 Example message(s)

The following examples illustrate the details of a request messages of the SSN2ES_Ship_Res.xml type:

```
<?xml version="1.0" encoding="UTF-8"?>
<SSN2ES_Ship_Res xmlns="eu.emsa.ssn.voyage" xmlns:ssn="eu.emsa.ssn"
xmlns:xsi="http://www.w3.org/2001/XMLSchema-instance" xsi:schemaLocation="urn:eu.emsa.ssn.voyage
seg_4_0.xsd">
  <Header Version="4.0" SentAt="2018-01-08T10:00:10" From="SafeSeaNet" To="SEG"
ESRefId="SHIP_REQ_20180108_1" SSNRefId="SHIP_REQ_20180108_1" StatusCode="OK"/>
  <Body>
    <RequestOriginator OriginatorID="thanosld"/>
    <SearchCriteria IMONumber="9134256" MRSIdentification="ADRIREP" ShipNotType="MRS"/>
    <NotificationDetails SentAt="2017-12-28T12:05:18Z" From="GRPIR01">
      <VesselIdentification IMONumber="9134256" MMSINumber="564621000"
CallSign="9V7953" ShipName="EVER DELUXE"/>
      <ssn:MRSNotificationDetails>
        <ssn:MRSInformation MRSIdentification="ADRIREP"
CSTIdentification="IT_TriesteMRSC"/>
        <ssn:MRSVoyageInformation NextPortOfCall="GRLAV"
TotalPersonsOnBoard="50" Longitude="108600000" Latitude="-54000000" AnyDG="Y"
ReportingDateAndTime="2017-09-27T11:00:00Z"/>
        <ssn:MRSDynamicInformation COG="1000" SOG="500" NavigationalStatus="1"/>
        <ssn:MRSCargoInformation CargoType="type of cargo">
          <ssn:DG AOI="information on oil cargo types">
            <ssn:DGDDetails IMOClass="imoclz" Quantity="2"/>
          </ssn:DG>
        </ssn:MRSCargoInformation>
      </ssn:MRSNotificationDetails>
    </NotificationDetails>
  </Body>
</SSN2ES_Ship_Res>
```

3.4 Get IncidentReport Notification details

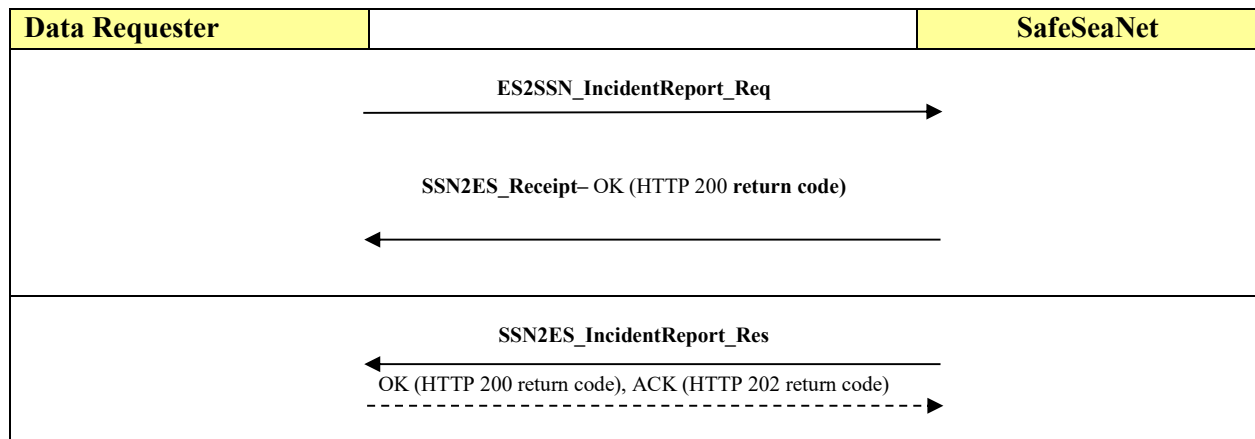
3.4.1 Introduction

The **ES2SSN_IncidentReport_Req.xml** message is sent by a maritime application external to SSN EIS (e.g. STIRES, SEG or, if so decided, an MS application) (*data requester*) to SSN EIS application to request the Incident Reports in accordance with the search criteria defined by the user.

The **SSN2ES_IncidentReport_Res.xml** message is the final response sent by SSNEIS to an external (to SSN EIS) application requesting the Incident Reports in accordance with the search criteria provided by the user in the request message.

3.4.2 Message Flow

The following figure outlines the expected asynchronous flow of XML messages related to this transaction:



3.4.3 ES2SSN_IncidentReport_Req.xml message

3.4.3.1 Message description

The following table describes the XML message used for the transaction.

Entities		Attributes	Occ
Header			1
		Version	1
		TestId	0-1
		ESRefId	1
		SentAt	1
		TimeoutValue	1
		From	1
		To	1
Body			1
	RequestOriginator		0-1
		OriginatorID	1
	IRQueryCriteria		1
		TypeOfQuery	1
		GetIRInformation	1
		IncidentSelectionCriteria	0-1
		IncidentID	0-1

Entities		Attributes	Occ
		IncidentSelectionType	0-N ²
		Type	1
		ShipIdentificationCriteria	0-1
		IMONumber	0-1
		MMSINumber	0-1
		CallSign	0-1
		ShipName	0-1
		Flag	0-1
		IRNumber_FishingVessel	0-1
		TimePeriodCriteria	0-1
		StartDateTime	1
		EndDateTime	1
		GeographicCriteria	0-1
		PortOfDepartureQuotedInIR	0-1
		PortOfDestinationQuotedInIR	0-1

3.4.3.2 Business rules

The following table describes the ES2SSN_IncidentReport_Req XML message used for the transaction and the applicable business rules.

ES2SSN_IncidentReport_Req - Item	Occ	Description
Header	1	
Version	1	
TestId	0-1	
ESRefId	1	The ESRefId must be unique.
SentAt	1	Format "YYYY-MM-DDThh:mm:ssTZD" Where TZD = time zone designator (Z or +hh:mm or -hh:mm).
TimeoutValue	1	
From	1	
To	1	
Body	1	
RequestOriginator	0-1	
OriginatorID	1	The user ID of the end-user who is the actual originator of the request submitted by SafeSeaNet Ecosystem GUI to EIS.
IRQueryCriteria	1	Defines the query parameters. Elements and attributes to be provided within this element and business rules depend on type of query (value of GetIRInformation). See table below.
TypeOfQuery	1	

²N equals to the number of Incident Types

ES2SSN_IncidentReport_Req - Item	Occ	Description
GetIRInformation	1	Type of query. Refer to the table below for possible values and description of queries, parameters and business rules.
IncidentSelectionCriteria	0-1	If GetIRInformation="GetSpecificIR" or GetIRInformation="SpecificTypesIRsOfSelectedShip", IncidentSelectionCriteria element must be defined.
IncidentID	0-1	If GetIRInformation="GetSpecificIR", IncidentID must be defined.
IncidentSelectionType	0-N	If GetIRInformation="SpecificTypesIRsOfSelectedShip", IncidentSelectionType element must be defined.
Type	1	
ShipIdentificationCriteria	0-1	If GetIRInformation="AllIRsOfSelectedShip", or GetIRInformation="SpecificTypesIRsOfSelectedShip", ShipIdentificationCriteria element must be defined. If defined then at least one of IMONumber, MMSINumber or IRNumber_FishingVessel must be defined.
IMONumber	0-1	
MMSINumber	0-1	
CallSign	0-1	
ShipName	0-1	
Flag	0-1	
IRNumber_FishingVessel	0-1	
TimePeriodCriteria	0-1	
StartDateTime	1	
EndDateTime	1	
GeographicCriteria	0-1	If GetIRInformation="IRsForSpecificPort", one of PortOfDepartureQuotedInIR or PortOfDestinationQuotedInIR attributes must be defined.
PortOfDepartureQuotedInIR	0-1	
PortOfDestinationQuotedInIR	0-1	

3.4.3.3 Business rules for the queries identified by the GetDetails attribute

ID	Value of the "GetIRInformation" element	Information to be included in the RES message	Attributes to be set for accepting the REQ as valid (mandatory)	Optional attribute	Timeframe
1	AllIRsOfSelectedShip	Data related to all the IRs concerning a selected ship (on the basis of the "ShipIdentificationCriteria" element). The query will provide the full details. Results are limited to the latest 10 IR unless "StartDateTime" and "EndDateTime" are quoted.	"IMONumber" or "MMSINumber" or "IRNumber_FishingVessel"	"CallSign", "ShipName", "StartDateTime", "EndDateTime" ("StartDateTime" and "EndDateTime" are referred to "SentAt")	Results are limited to 5 years before SentAt
2	SpecificTypesIRsOfSelectedShip	Data related to the IRs of a specific type(s) concerning a selected ship (on the basis of the "ShipIdentificationCriteria" element). The query will provide the full details. Results are limited to the last 10 IR received by SSN unless "StartDateTime" and "EndDateTime" are quoted	"IMONumber" or "MMSINumber" or "IRNumber_FishingVessel" + "Type" ("IncidentSelectionCriteria" element)	"CallSign", "ShipName", "StartDateTime", "EndDateTime" ("StartDateTime" and "EndDateTime" are referred to "SentAt")	Results are limited to 5 years before SentAt
3	IRsForSpecificPort	Data related to all the IRs concerning ships bounding/leaving a specific port (on the basis of the "GeographicCriteria"). The query will provide the full details. Unless "StartDateTime" and "EndDateTime" are quoted, results are limited to the last 15 days (e.g. "EndDateTime"=SentAt, "StartDateTime"=SentAt-15 days)	"PortOfDepartureQuotedInIR" or "PortOfArrivalQuotedInIR" (both are referred to the "IRVoyageInformation" in the "ES2SSN_IncidentDetailNotification")	"StartDateTime", "EndDateTime" ("StartDateTime" and "EndDateTime" are referred to "SentAt")	Results are limited to 1 year before SentAt
4	GetSpecificIR	Data related to the specific IR as identified by "IncidentID". The query provides full details	"IncidentID"	none	Results are limited to 5 years before SentAt

3.4.3.4 Example message(s)

The following examples illustrate the details of a request messages of the ES2SSN_IncidentReport_Req.xml type:

```
<?xml version="1.0" encoding="UTF-8"?>
<ES2SSN_IncidentReport_Req xmlns="urn:eu.emsa.ssn.voyage" xmlns:ssn="urn:eu.emsa.ssn"
xmlns:xsi="http://www.w3.org/2001/XMLSchema-instance" xsi:schemaLocation="urn:eu.emsa.ssn.voyage
seg_4_0.xsd">
  <Header ESRefId="IR_REQ_20180108_1" From="SEG" SentAt="2018-01-08T10:30:00" TimeoutValue="60"
To="SafeSeaNet" Version="4.0"/>
  <Body>
    <RequestOriginator OriginatorID="thanosId"/>
    <IRQueryCriteria>
      <ssn:TypeOfQuery GetIRInformation="AllIRsOfSelectedShip"/>
      <ssn:IncidentSelectionCriteria IncidentID="GRInAmOB1u6l8Hpb9">
        <ssn:IncidentSelectionType Type="POLREP"/>
      </ssn:IncidentSelectionCriteria>
      <ssn:ShipIdentificationCriteria IMONumber="8022913"/>
    </IRQueryCriteria>
  </Body>
</ES2SSN_IncidentReport_Req>
```

3.4.4 SSN2ES_IncidentReport_Res.xml message

3.4.4.1 Message description

The following table describes the XML message used for the transaction.

Entities			Attributes	Occ
Header				1
			Version	1
			TestId	0-1
			ESRefId	1
			SSNRefId	1
			SentAt	1
			From	1
			To	1
			StatusCode	1
			StatusMessage	0-1
Body				1
RequestOriginator				0-1
			OriginatorID	1
IRQueryCriteria				1
TypeOfQuery				1
			GetIRInformation	1
IncidentSelectionCriteria				0-1

Entities							Attributes	Occ
							IncidentID	0-1
					IncidentSelectionType			0-N
							Type	1
		ShipIdentificationCriteria						0-1
							IMONumber	0-1
							MMSINumber	0-1
							CallSign	0-1
							ShipName	0-1
							Flag	0-1
							IRNumber_FishingVessel	0-1
		TimePeriodCriteria						0-1
							StartDateTime	1
							EndDateTime	1
		GeographicCriteria						0-1
							PortOfDepartureQuotedInIR	0-1
							PortOfDestinationQuotedInIR	0-1
		ProvidedIncidentdetails						0-1
			Incidents					1-99
			IncidentIdentification					1
						Type	1	
					IncidentID	1		
					ReportSequence	0-1		
					AssociatedIncidentReport		0-99	
					AssociatedIncidentID	1		
	IRDistributionDetails					0-1		
					IRDistributionToFlagState	0-1		
					IRRecipient		0-99	
					RecipientCountry	1		
					ActionRequestedDetail	0-1		
	IRVesselIdentificationList					0-1		
		IRVesselIdentification				1-99		
		IRVessel_IdentityVerified				0-1		
					IMONumber	0-1		
					MMSINumber	0-1		
					CallSign	0-1		
					ShipName	0-1		
					Flag	0-1		
					IRNumber_FishingVessel	0-1		

Entities						Attributes	Occ
						IRVessel_IdentityNotFullyVerified	0-1
						DescribeVessel	1
						IRVoyageInformation	0-1
						PortofDeparture	0-1
						PortOfDestination	0-1
						TotalPersonsOnBoard	0-1
						CargoManifest	0-1
						UrlDetails	0-1
						Url	1
						DocType	1
						ContactDetails	0-1
						LastName	0-1
						FirstName	0-1
						LoCode	1
						Phone	1
						Fax	1
						EEmail	0-1
						ShipPositionAtTimeOfIncident	0-1
						GeoCoordinates	0-1
						Longitude	1
						Latitude	1
						Area	0-1
						GeographicalArea	1
						BearingDistance	0-1
						Bearing	1
						Distance	1
						Mark	1
						ShipPositionAtTimeOfReporting	0-1
						GeoCoordinates	0-1
						Longitude	1
						Latitude	1
						Area	0-1
						GeographicalArea	1
						BearingDistance	0-1
						Bearing	1
						Distance	1
						Mark	1
						AuthorityReportingIncident	0-1
						SSNUserIdentifier	0-1

Entities								Attributes	Occ
								SSNUserId	1
								IdentificationOfAuthority	0-1
								AuthorityName	1
								LoCode	1
								Phone	1
								Fax	1
								E-Mail	0-1
								IncidentDetailsDocument	0-1
								Base64Details	1
								DocType	1
								Base64Content	1
								IncidentDetails	0-1
								WasteIncidentInformation	0-1
								NonComplianceInformation	1
								WasteDeliveryDuePort	1
								ETD	1
								InspectionReason	1
								InspectionInformation	0-1
								Deficiencies	1
								ActionTaken	1
								InspectionAuthority	1
								Name	1
								Coordinates	0-1
								Phone	0-1
								Fax	0-1
								E-Mail	0-1
								SITREPIncidentInformation	0-1
								SITREPIncidentInformation	1
								C_Situation	1
								MessageType	1
								NotifiedAt	1
								Nature	1
								D_NumberOfPersonsAtRisk	0-1
								E_AssistanceRequired	0-1
								F_CoordinatingAuthority	0-1
								G_CasualtyDescription	0-1
								H_WeatherOnScene	0-1
								J_InitialActionTaken	1
								K_SearchArea	0-1

Entities							Attributes	Occ
							L_CoordinatingInstructions	0-1
							M_FuturePlans	0-1
							N_AdditionalInformation	0-1
							POLREPIncidentInformation	0-1
							POLREPIInformation	1
							POLWARN	0-1
							P1_DateTime	1
							P3_Incident	0-1
							P4_Outflow	0-1
							P5_Acknowledge	0-1
							P2_Position	1
							GeoCoordinates	0-1
							Longitude	1
							Latitude	1
							Area	0-1
							GeographicalArea	1
							BearingDistance	0-1
							Bearing	1
							Distance	1
							Mark	1
							POLINF	0-1
							P40_DateTime	0-1
							P41_PollutionPosition	0-1
							P42_PollutionChars	0-1
							P43_PollutionSource	0-1
							P44_Wind	0-1
							Speed	1
							Direction	1
							P45_Tide	0-1
							Speed	1
							Direction	1
							P46_SeaState	0-1
							WaveHeight	1
							Visibility	0-1
							P47_PollutionDrift	0-1
							DriftCourse	1
							DriftSpeed	1
							P48_PollutionEffectForecast	0-1
							P49_ObserverIdentity	0-99

Entities								Attributes	Occ
								Name	1
								HomePort	0-1
								Flag	0-1
								CallSign	0-1
							P50_ActionTaken		1
							P51_Photos		0-1
							P52_InformedStateOrg		0-99
							Name		1
							P53_OtherInformation		0-1
							P60_Acknowledge		0-1
						POLFAC			0-1
							P80_DateTime		0-1
							P81_RequestForAssistance		0-1
							Assistance		0-1
							P82_Cost		1
							P83_PreArrangements		1
							P84_Delivery		1
							P85_InformedStateOrg		0-99
							Name		1
							P86_ChangeOfCommand		0-1
							P87_ExchangeOfInformation		0-1
							P88_OtherInformation		0-1
							P99_Acknowledge		0-1
							LostFoundObjectIncidentInformation		0-1
							LostFoundObjectInformation		1
							DateTimeReportLostFoundObject		1
							P1_ReportType		1
							P2_ShipOrObserverIdentification		0-1
							IMONumber		0-1
							MMSINumber		0-1
							CallSign		0-1
							ShipName		0-1
							Flag		0-1
							IRNumber_FishingVessel		0-1
							Other		0-1
							ObjectInformation		1
							P3_ObjectPosition		1
							GeoCoordinates		0-1
							Longitude		1

Entities								Attributes	Occ
								Latitude	1
							Area		0-1
								GeographicalArea	1
							BearingDistance		0-1
								Bearing	1
								Distance	1
								Mark	1
							ObjectDetails		0-1
								P4_NumberOfObjects	0-1
								P5_TypeOfGoods	0-1
							Object		0-99
								Description	1
								CargoLeaking	0-1
							Wind		0-1
								Speed	1
								Direction	1
							Tide		0-1
								Speed	1
								Direction	1
							SeaState		0-1
								WaveHeight	1
								Visibility	0-1
							ObjectDrift		0-1
								DriftCourse	1
								DriftSpeed	1
							FailedNotificationIncidentInformation		0-1
							Description		1
							<TBD>		
							VTSRulesInfringementIncidentInformation		0-1
							Description		1
							<TBD>		
							BannedShipIncidentInformation		0-1
							Description		1
							<TBD>		
							InsuranceFailureIncidentInformation		0-1
							Description		1
							<TBD>		
							PilotOrPortReportIncidentInformation		0-1
							Description		1

Entities						Attributes		Occ	
					<TBD>				
			OtherIncidentInformation						0-1
					Description			1	
					<TBD>				
			<TBD>						-
	FeedbackList							0-1	
			FeedbackInformation					1-99	
			FeedbackIdentification					1	
						FeedbackID		1	
						IncidentID		1	
			FeedbackDistribution					0-1	
						FeedbackDistributionToFlagState		0-1	
					FeedbackRecipient			0-99	
						RecipientCountry		1	
			AuthorityReportingAction					1	
			SSNUserIdentifier					0-1	
						SSNUserID		1	
			IdentificationOfAuthority					0-1	
						AuthorityName		1	
						LoCode		1	
						Phone		1	
						Fax		1	
						EMail		0-1	
					ReportActionDetails			0-1	
						DateTimeReportAction		1	
						Details		1	
			ReportActionDocument					0-1	
					Base64Details			1	
						DocType		1	
						Base64Content		1	
					<TBD>			-	

3.4.4.2 Business rules

The following table describes the SSN2ES_IncidentReport_Res XML message used for the transaction and the applicable business rules.

SSN2ES_IncidentReport_Res - Item	Occ	Description
Header	1	Header Node
Version	1	none
TestId	0-1	none
ESRefId	1	The ESRefId must be unique
SSNRefId	1	The SSNRefId is unique
SentAt	1	Format "YYYY-MM-DDThh:mm:ssTZD" Where TZD = time zone designator (Z or +hh:mm or -hh:mm).
From	1	None
To	1	None
StatusCode	1	None
StatusMessage	0-1	None
Body	1	Body Element Node
RequestOriginator	0-1	
OriginatorID	1	
IRQueryCriteria	1	IRQueryCriteria element node
TypeOfQuery	1	TypeOfQuery element node
GetIRInformation	1	From original ES2SSN_IncidentReport_Req request
IncidentSelectionCriteria	0-1	IncidentSelectionCriteria element node
IncidentID	0-1	From original ES2SSN_IncidentReport_Req request
IncidentSelectionType	0-N	
Type	1	
ShipIdentificationCriteria	0-1	
IMONumber	0-1	From original ES2SSN_IncidentReport_Req request
MMSINumber	0-1	From original ES2SSN_IncidentReport_Req request
CallSign	0-1	From original ES2SSN_IncidentReport_Req request
ShipName	0-1	From original ES2SSN_IncidentReport_Req request
Flag	0-1	From original ES2SSN_IncidentReport_Req request
IRNumber_FishingVessel	0-1	From original ES2SSN_IncidentReport_Req request
TimePeriodCriteria	0-1	Time Period Criteria Node
StartDateTime	1	From original ES2SSN_IncidentReport_Req request
EndDateTime	1	From original ES2SSN_IncidentReport_Req request
GeographicCriteria	0-1	Geographic Criteria Node
PortOfDepartureQuotedInIR	0-1	From original ES2SSN_IncidentReport_Req request

SSN2ES_IncidentReport_Res - Item	Occ	Description
PortOfDestinationQuotedInIR	0-1	From original ES2SSN_IncidentReport_Req request
ProvidedIncidentdetails	0-1	ProvidedIncidentdetails Node. Not allowed if StatusCode <> OK
Incidents	1-99	Incidents Node
IncidentIdentification	1	IncidentIdentification Node
Type	1	none
IncidentID	1	The IncidentID must be unique per national SSN system per type of incident (e.g. after an event such as a collision a SITREP and a POLREP are issued the data provider. <i>Proposed structure: 2 letter country code + operational number at national level.</i> The IncidentID replaces also the old attribute "SitrepID"
ReportSequence	0-1	none
AssociatedIncidentReport	0-99	AssociatedIncidentReport Node
AssociatedIncidentID	1	none
IRDistributionDetails	0-1	IRDistributionDetails element node. Mandatory for distributed Incident reports.
IRDistributionToFlagState	0-1	Mandatory in case IRRecipientList not provided Only possible for Incident about SSN participants flag ships. If quoted, an automatic function will pick up the recipients from the vessel identification details
IRRecipient	0-99	List of recipients Element Node
RecipientCountry	1	Mandatory in case IRDistributionToFlagState not provided
ActionRequestedDetail	0-1	
IRVesselIdentificationList	0-1	IRVesselIdentificationList element node. Mandatory if vessel(s) identified. Possibility to identify more than one ship involved in the same incident. Element to be repeated if several ships are involved in the same incident. Mandatory if Incident type is: - WasteIncident - FailedNotification - VTSRulesInfringement - BannedShip - InsuranceFailure - PilotOrPortReport
IRVesselIdentification	1-99	
IRVessel_IdentityVerified	0-1	
IMONumber	0-1	Mandatory if MMSINumber or IRNumber_FishingVessel not given.
MMSINumber	0-1	Mandatory if IMONumber or IRNumber_FishingVessel not given.
CallSign	0-1	none

SSN2ES_IncidentReport_Res - Item	Occ	Description
ShipName	0-1	none
Flag	0-1	none
IRNumber_FishingVessel	0-1	Mandatory if IMONumber or MMSINumber not given.
IRVessel_IdentityNotFullyVerified	0-1	IRVessel_IdentityNotFullyVerified element node. Mandatory if IRVessel_IdentityVerified not provided. Not accepted if IRVessel_IdentityVerified provided. If only one ship is identified in the Incident Report and if IRVessel_IdentityNotFullyVerified, the Incident Report will be recorded in SSN as Incident Report with non identified vessel.
DescribeVessel	1	none
IRVoyageInformation	0-1	VoyageInformation element node.
PortofDeparture	0-1	none
PortOfDestination	0-1	none
TotalPersonsOnBoard	0-1	none
CargoManifest	0-1	CargoManifest element node
UrlDetails	0-1	UrlDetails element node. Mandatory if ContactDetails not provided
Url	1	The Url must start with https://
DocType	1	Extensions are case insensitive
ContactDetails	0-1	ContactDetails element node. Mandatory if UrlDetails not provided.
LastName	0-1	none
FirstName	0-1	none
LoCode	1	Location code of the Maritime Authority. Can be any LOCODE listed in the UNECE LOCODE list (i.e. not only LOCODES of ports) or any LOCODE listed in the SSN specific LOCODE list of EMSA
Phone	1	Only numbers and the symbol "+" are allowed. No spaces allowed.
Fax	1	Only numbers and the symbol "+" are allowed. No spaces allowed.
EMail	0-1	Email address of the contact person.
ShipPositionAtTimeOfIncident	0-1	ShipPositionAtTimeOfIncident element node. Mandatory for Incident type SITREP with vessel identified
GeoCoordinates	0-1	GeoCoordinates element node. Mandatory if Area or BearingDistance not provided
Longitude	1	none
Latitude	1	none
Area	0-1	Area element node. Mandatory if GeoCoordinates or BearingDistance not provided
GeographicalArea	1	none

SSN2ES_IncidentReport_Res - Item	Occ	Description
BearingDistance	0-1	BearingDistance element node. Mandatory if Area or GeoCoordinates not provided
Bearing	1	Indicated in the 360 degrees notation from true north and shall be that of the position from the mark
Distance	1	Indicated in nautical miles.
Mark	1	none
ShipPositionAtTimeOfReporting	0-1	ShipPositionAtTimeOfReporting element node. Not required if the position is the same as ShipPositionAtTimeOfIncident
GeoCoordinates	0-1	GeoCoordinates element node. Mandatory if Area or BearingDistance not provided
Longitude	1	none
Latitude	1	none
Area	0-1	Area element node. Mandatory if GeoCoordinates or BearingDistance not provided
GeographicalArea	1	none
BearingDistance	0-1	BearingDistance element node. Mandatory if Area or GeoCoordinates not provided
Bearing	1	Indicated in the 360 degrees notation from true north and shall be that of the position from the mark
Distance	1	Indicated in nautical miles.
Mark	1	none
AuthorityReportingIncident	0-1	Authority reporting incident element. Not allowed if StatusCode <> OK. Either SSNUserId or the AuthorityName and contact details are defined.
SSNUserIdentifier	0-1	none
SSNUserID	1	none
IdentificationOfAuthority	0-1	
AuthorityName	1	none
LoCode	1	Location code of the contact person. Can be any LOCODE listed in the UNECE LOCODE list (i.e. not only LOCODES of ports) or any LOCODE listed in the SSN specific LOCODE list of EMSA
Phone	1	Only numbers and the symbol "+" are allowed. No spaces allowed.
Fax	1	Only numbers and the symbol "+" are allowed. No spaces allowed.
EMail	0-1	Email address of the contact person.

SSN2ES_IncidentReport_Res - Item	Occ	Description
<i>IncidentDetailsDocument</i>	0-1	IncidentDetailsDocument element node.
<i>Base64Details</i>	1	Base64Details element. Mandatory when the data provider can only provide incident details as downloadable files
DocType	1	Extensions are case insensitive
Base64Content	1	Base64-encoded characters of the notification details downloaded by SafeSeaNet.
<i>IncidentDetails</i>	0-1	IncidentDetails element node. Not allowed if StatusCode <> OK
<u>WasteIncidentInformation</u>	0-1	WasteAlertInformation element node (if incident type = Waste). From incoming ES2SSN_IncidentDetail_Not
...		From incoming ES2SSN_IncidentDetail_Not (if any)
<u>SITREPIncidentInformation</u>	0-1	SITREPAAlertInformation element node (if incident type = SITREP). From incoming ES2SSN_IncidentDetail_Not (if any)
...		From incoming ES2SSN_IncidentDetail_Not (if any)
<u>POLREPIncidentInformation</u>	0-1	POLREPAAlertInformation element node (if incident type = POLREP). From incoming ES2SSN_IncidentDetail_Not (if any)
...		From incoming ES2SSN_IncidentDetail_Not (if any)
<u>LostFoundObjectIncidentInformation</u>	0-1	LostFoundContainersAlertInformation element node (if incident type = LostFoundContainers). From incoming ES2SSN_IncidentDetail_Not (if any)
...		From incoming ES2SSN_IncidentDetail_Not or (if any)
<u>FailedNotificationIncidentInformation</u>	0-1	FailedNotificationIncidentInformation element node (if incident type = FailedNotificationIncidentInformation). From incoming ES2SSN_IncidentDetail_Not (if any)
-		From incoming ES2SSN_IncidentDetail_Not (if any)
<u>VTSRulesInfringementIncidentInformation</u>	0-1	VTSRulesInfringementIncidentInformation element node (if incident type = VTSRulesInfringementIncidentInformation). From incoming ES2SSN_IncidentDetail_Not (if any)
-		From incoming ES2SSN_IncidentDetail_Not (if any)
<u>BannedShipIncidentInformation</u>	0-1	BannedShipIncidentInformation element node (if incident type = BannedShipIncidentInformation). From incoming ES2SSN_IncidentDetail_Not (if any)
-		From incoming ES2SSN_IncidentDetail_Not (if any)

SSN2ES_IncidentReport_Res - Item	Occ	Description
<u>InsuranceFailureIncidentInformation</u>	0-1	InsuranceFailureIncidentInformation element node (if incident type = InsuranceFailureIncidentInformation). From incoming ES2SSN_IncidentDetail_Not (if any)
...		From incoming ES2SSN_IncidentDetail_Not (if any)
<u>PilotOrPortReportIncidentInformation</u>	0-1	PilotOrPortReportIncidentInformation element node (if incident type = PilotOrPortReportIncidentInformation). From incoming ES2SSN_IncidentDetail_Not (if any)
...		From incoming ES2SSN_IncidentDetail_Not (if any)
<u>OtherIncidentInformation</u>	0-1	OtherIncidentInformation element node (if incident type = OtherIncidentInformation or Others). From incoming ES2SSN_IncidentDetail_Not (if any)
...		From incoming ES2SSN_IncidentDetail_Not (if any)
FeedbackList	0-1	FeedbackList element node.
FeedbackInformation	1-99	FeedbackInformation element node.
FeedbackIdentification	1	FeedbackIdentification element node.
FeedbackID	1	Unique identifier of feedback
IncidentID	1	Unique identifier of Incident Report
FeedbackDistribution	0-1	FeedbackDistribution element node.
FeedbackDistributionToFlagState	0-1	From original ES2SSNIncidentDetail_Not.
FeedbackRecipient	0-99	FeedbackRecipient element node.
RecipientCountry	1	From original ES2SSNIncidentDetail_Not.
AuthorityReportingAction	1	AuthorityReportingAction element node.
SSNUserIdentifier	0-1	SSN user identification. If provided, IdentificationOfAuthority will not be provided.
SSNUserID	1	From original ES2SSNIncidentDetail_Not
IdentificationOfAuthority	0-1	Identification of authority. If provided, SSNUserIdentifier will not be provided.
AuthorityName	1	From original ES2SSNIncidentDetail_Not
LoCode	1	
Phone	1	
Fax	1	
EMail	0-1	
ReportActionDetails	0-1	ReportActionDetails element node
DateTimeReportAction	1	From original ES2SSNIncidentDetail_Not
Details	1	From original ES2SSNIncidentDetail_Not
ReportActionDocument	0-1	ReportActionDocument element node
Base64Details	1	Base64Details element node.
DocType	1	From original ES2SSNIncidentDetail_Not

SSN2ES_IncidentReport_Res - Item	Occ	Description
Base64Content	1	
<TBD>	-	

3.4.4.3 Example message(s)

The following examples illustrate the details of a request messages of the SSN2ES_IncidentReport_Req.xml type:

```
<?xml version="1.0" encoding="UTF-8"?>
<SSN2ES_IncidentReport_Res xmlns="eu.emsa.ssn.voyage" xmlns:ssn="eu.emsa.ssn"
xmlns:xsi="http://www.w3.org/2001/XMLSchema-instance" xsi:schemaLocation="urn:eu.emsa.ssn.voyage
seg_4_0.xsd">
  <Header Version="4.0" SentAt="2018-01-08T10:30:10Z" From="SafeSeaNet" To="SEG"
ESRefId="IR_REQ_20180108_1" SSNRefId="IR_REQ_20180108_1" StatusCode="OK"/>
  <Body>
    <RequestOriginator OriginatorID="thanosId"/>
    <IRQueryCriteria>
      <ssn:TypeOfQuery GetIRInformation="AllIRsOfSelectedShip"/>
      <ssn:IncidentSelectionCriteria IncidentID="GRInAmOB1u6l8Hpb9">
        <ssn:IncidentSelectionType Type="POLREP"/>
      </ssn:IncidentSelectionCriteria>
      <ssn:ShipIdentificationCriteria IMONumber="8022913"/>
    </IRQueryCriteria>
    <ProvidedIncidentdetails>
      <ssn:Incidents>
        <ssn:IncidentIdentification Type="POLREP" IncidentID="GRInAmOB1u6l8Hpb9"/>
        <ssn:IRDistributionDetails IRDistributionToFlagState="Y">
          <ssn:IRRecipient RecipientCountry="EU"/>
          <ssn:IRRecipient RecipientCountry="DE"/>
        </ssn:IRDistributionDetails>
        <ssn:IRVesselIdentificationList>
          <ssn:IRVesselIdentification>
            <ssn:IRVessel_IdentityVerified IMONumber="8022913"
MMSINumber="258319000" CallSign="LMTR" ShipName="GAYSER SENIOR"/>
            <ssn:ShipPositionAtTimeOfIncident>
              <ssn:GeoCoordinates Longitude="12" Latitude="12"/>
            </ssn:ShipPositionAtTimeOfIncident>
          </ssn:IRVesselIdentification>
        </ssn:IRVesselIdentificationList>
        <ssn:AuthorityReportingIncident>
          <ssn:SSNUserIdentifier SSNUserID="SSNADMIN"/>
        </ssn:AuthorityReportingIncident>
        <ssn:IncidentDetails>
          <ssn:POLREPIncidentInformation>
            <ssn:POLREPInformation>
              <ssn:POLINF P50_ActionTaken="taken">
                <ssn:P49_ObserverIdentity Name="name1"
HomePort="port1" Flag="GR" CallSign="csign1"/>
              </ssn:POLINF>
            </ssn:POLREPInformation>
          </ssn:POLREPIncidentInformation>
        </ssn:IncidentDetails>
      </ssn:Incidents>
    </ProvidedIncidentdetails>
  </Body>
</SSN2ES_IncidentReport_Res>
```

```

HomePort="port3"/>
<ssn:P49_ObserverIdentity Name="name3"
  <ssn:P52_InformedStateOrg Name="1"/>
  </ssn:POLINF>
  </ssn:POLREPIInformation>
  </ssn:POLREPIIncidentInformation>
  </ssn:IncidentDetails>
  </ssn:Incidents>
  </ProvidedIncidentdetails>
</Body>
</SSN2ES_IncidentReport_Res>

```

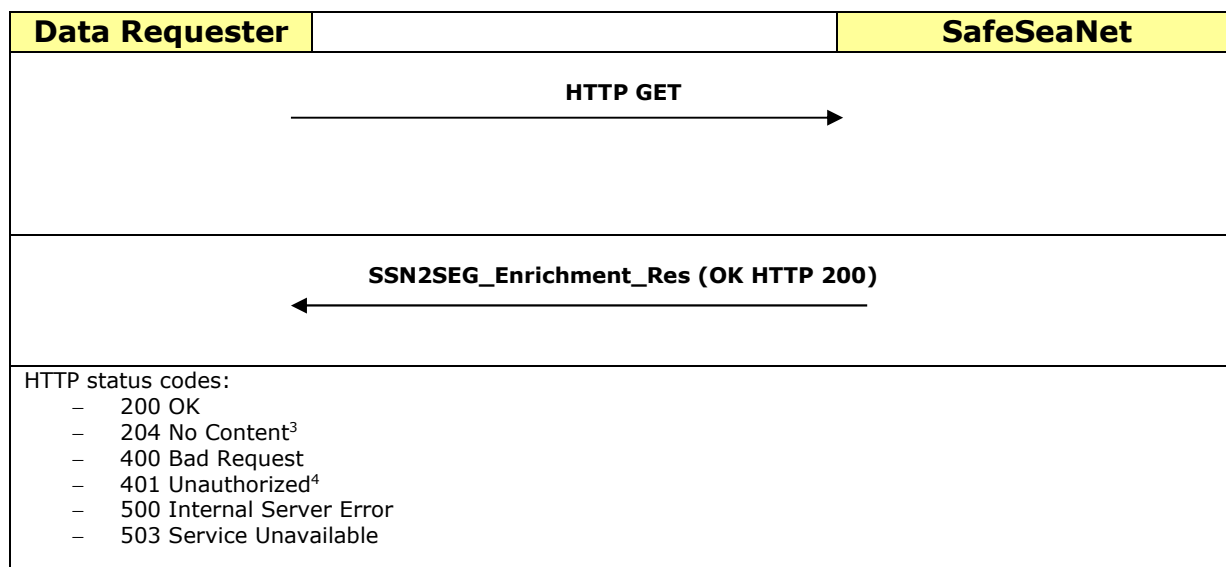
3.5 Get Vessel Enrichment and Exemption data

3.5.1 Introduction

This section describes the request operation.

3.5.2 Message flow

The following figure outlines the expected synchronous flow of XML messages related to this SafeSeaNet XML transaction.



³According to jsr339-jaxrs-2.0-final-spec for Return Type

If the return value is not null a 200 status code is used; a null return value results in a 204 status code.

⁴HTTP Basic authentication (BA) should be used on REST methods to identify the name (BA username) of the system/user retrieves SEG Enrichment information; EIS core system uses the BA username to authorise the request.

3.5.3 Enrichment and Exemption requests

The request is submitted to a single end point using RESTFUL Services.

3.5.3.1 Operation description

A request is submitted as following:

Operation name is a choice of:

- a) voyages (returns all voyages currently with status active; request the active voyage information for all the valid ships.). Active voyages are voyages with status "on going" and "at port" at the time of the request, as defined in Annex A of SSN SDD.
- b) incidents (returns the latest active incident (based on the sent at of the incident) per incident type; request enrichment information for the active incidents (active status decided according to the table here- below) at the time of the request) for all the valid ships.

Incident type	Labelling of the ship time
Waste – Waste not delivered POLREP	15 days
	30 days
SITREP	5 days
LFC (Lost and Found Objects)	3 days
Failed Notification	7 days
VTS Rules Infringement	7 days
Banned Ship alert	7 days
Insurance Failure	7 days
Pilot Or Port Report	7 days
Other	7 days

Table 1 Period⁵ (in days) during which an incident is considered as "active" for labelling it as such in SEG

- c) MRS (returns all MRS notifications currently active; request enrichment information for the latest received MRS information available in SSN (on the basis of "ReportingDateAndTime") for all the valid ships).
- d) Exemptions (returns exemptions being active for for all the valid ships). An active exemption is an exemption which "DateFrom" is past or equal to the date of the request and which "DateTo" is posterior or equal to the date of request.

⁵Period is the interval between the SentAT of the active incident request and the SentAt of the latest incident notification per incident type.

Operation type: get

Response message: XML document containing multiple records based on the choice of Operation name.

Sample query string (depending on the choice of Operation name) :

- a) ssn-seg-ws/enrichment/voyages
- b) ssn-seg-ws/enrichment/incidents
- c) ssn-seg-ws/enrichment/MRS
- d) ssn-seg-ws/enrichment/exemptions

3.5.4 SSN2SEG_Enrichment_Res.xml message

The SSN2SEG_Enrichment_Res message is the response sent by SafeSeaNet to a maritime application external to SSN EIS (e.g. STIRES, SEG or, if so decided, an MS application) (*data requester*).

3.5.4.1 Message description

The following table describes the XML message used for the transaction.

Elements		Attributes	Occ
Body			1
	EnrichmentResults		0-1
	ActiveVoyages		1--∞
	VesselIdentification		1
		CSDID	1
		IMONumber	0-1
		MMSINumber	0-1
		CallSign	0-1
		ShipName	0-1
		IR_Number	0-1
		XR_Number	0-1
		ER_Number	0-1
		Flag	0-1
	VoyageInformation		1
		SSNVoyageID	1
		ShipCallId	1
		ETAToPortOfCall	0-1
		ATAPortOfCall	0-1
		ATDPortOfCall	0-1

				PositionInPortOfCall	0-1
				ETAToNextPort	0-1
				POBVoyageTowardsPortOfCall	0-1
				LastPort	0-1
				LoCode	1
					0-1
				PortOfCall	1
				LoCode	1
					0-1
				NextPort	0-1
				LoCode	1
					0-1
				HazmatConfirmation	1
				HazmatOnBoardYorN	1
				WasteConfirmation	0-1
				WasteDeliveryStatus	1
				SecurityConfirmation	0-1
				CurrentSecurityLevel	1
				BunkersConfirmation	0-1
				BunkersReportedYorN	1
				ActiveIncidents	1-∞
				VesselIdentification	1
				CSDID	0-1
				IMONumber	0-1
				MMSINumber	0-1
				CallSign	0-1
				ShipName	0-1
				IR_Number	0-1
				XR_Number	0-1
				ER_Number	0-1
				Flag	0-1
				IncidentIdentification	1-10
				Type	1
				IncidentID	1
				ActiveMRS	1-∞
				VesselIdentification	1
				CSDID	0-1
				IMONumber	0-1
				MMSINumber	0-1
				CallSign	0-1

				ShipName	0-1
				IR_Number	0-1
				XR_Number	0-1
				ER_Number	0-1
				Flag	0-1
			MRSInformation		1
				MRSIdentification	1
				CSTIdentification	0-1
			MRSVoyageInformation		1
				NextPortOfCall	1
				ETA	0-1
				TotalPersonsOnBoard	1
				AnyDG	1
				Longitude	1
				Latitude	1
				ReportingDateAndTime	1

3.5.4.2 Business rules

The following table describes the XML message used for the transaction and the applicable business rules. The detailed definition of the attributes is included in [R2] Annex A.

Item (element or sub-element or specific attribute)	Description
EnrichmentResults	Element node,child to <i>Body</i> , including the results of the query to be executed. The <i>EnrichmentResults</i> element is only included in the response when a query has results. If specified, only one of <i>ActiveVoyages</i> , <i>ActiveIncidents</i> , <i>ActiveMRSelements</i> is included in the response, depending on the type of EIS web service operation defined in the original request.
ActiveVoyages	Element node,child to <i>EnrichmentResults</i> . Mandatory if value of <i>OperationType</i> attribute, defined in <i>EnrichmentOperation element</i> of the original request is "GetActiveVoyages" and query has results. If specified, <i>ActiveIncidents</i> and <i>ActiveMRS</i> elements are not allowed. <i>Returns the active voyages registered in SSN database, on the basis of the criteria defined in the original request message.</i> Active is considered a voyage that is having one of the states 0:initiated or 3:at port (ATA) with ETAPortofCall closest to the timestamp of the query. (for business definitions refer to SDD) : <ol style="list-style-type: none"> 1. "On-going". 2. "At port". 3. With ETAPortofCall closest to the timestamp of the query.
VoyageInformation	Element node. Child to <i>ActiveVoyages</i> . Includes the voyage related information.
ActiveIncidents	Element node,child to <i>EnrichmentResults</i> . Mandatory if value of <i>OperationType</i> attribute, defined in <i>EnrichmentOperation element</i> of the original request is "GetActiveIncidents" and query has results. If specified, <i>ActiveVoyages</i> and <i>ActiveMRS</i> elements are not allowed. <i>Returns the active incidents registered in SSN database, on the basis of the criteria defined in the original request message.</i>

Item (element or sub-element or specific attribute)	Description
	The service returns all the incidents of a specific type that are active at SentAt of the Request message received by SSN not only the latest reported to SSN. For the period of an incident is being active refer to Table 1) The service does not provide in the response the incidents associated with non-identified vessels nor the vessels with temporary identity status but only incidents associated with vessels whose identity is available in the CSD (vessels with CSDID).
IncidentIdentification	Element node. Child to <i>ActiveIncidents</i> . Includes the incident related identification information.
ActiveMRS	Element node, child to <i>EnrichmentResults</i> . Mandatory if value of <i>OperationType</i> attribute, defined in <i>EnrichmentOperation element</i> of the original request is "GetActiveMRS" and query has results. If specified, <i>ActiveVoyages</i> and <i>ActiveIncidents</i> elements are not allowed. <i>Returns the active MRS report for all the vessels listed in the CSD database, on the basis of the criteria defined in the original request message.</i>
MRSVoyageInformation	Element node. Child to <i>ActiveMRS</i> . Includes the related MRS voyage information.
VesselIdentification	Element node, child to <i>ActiveVoyages</i> , <i>ActiveIncidents</i> , <i>ActiveMRS</i> . Includes ship identifiers, CSDID and UVI for all the vessels associated to <i>ActiveVoyages</i> , <i>ActiveIncidents</i> or <i>ActiveMRS</i> elements.

3.5.4.3 Example message(s)

The following example illustrates the details of response messages of the SSN2SEG_Enrichment_Res.xml type:

```
<SSN2SEG_Enrichment_Res xmlns="urn:eu.emsa.ssn.voyage"
  xmlns:ssn="urn:eu.emsa.ssn" xmlns:xsi="http://www.w3.org/2001/XMLSchema-instance"
  xsi:schemaLocation="urn:eu.emsa.ssn.voyage seg_4_0.xsd">
  <Body>
    <EnrichmentResults>
      <ActiveVoyages>
        <VesselIdentification IMONumber="9316294"
          MMSINumber="311996000" CallSign="C6UR4" ShipName="THAMES
HIGHWAY"
          Flag="BS" CSDID="158223"/>
        <VoyageInformation SSNVoyageID="phics2010_447508#PL"
          ShipCallID="phics2010_447508" ETAToPortOfCall="2017-04-
23T21:00:00Z"
          ATAPortOfCall="2017-04-23T20:45:00Z" PositionInPortOfCall="Helsinki I"
          ETAToNextPort="2017-04-25T04:00:00Z"
          POBVoyageTowardsPortOfCall="21">
          <LastPort LoCode="BEZEE"/>
          <PortOfCall LoCode="PLGDY"/>
          <NextPort LoCode="SEMMA"/>
          <HazardConfirmation HazardOnBoardYorN="N"/>
          <WasteConfirmation WasteDeliveryStatus="None"/>
          <SecurityConfirmation CurrentSecurityLevel="SL1"/>
          <BunkersConfirmation BunkersReportedYorN="Y"/>
        </VoyageInformation>
      </ActiveVoyages>
    </EnrichmentResults>
  </Body>
</SSN2SEG_Enrichment_Res>
```

```

MMSINumber="308539000" CallSign="C6UU7" ShipName="SHANNON
FISHER"

Flag="BS" CSDID="153131"/>
<VoyageInformation SSNVoyageID="FRDKK2005029320489#FR"
ShipCallID="FRDKK2005029320489" ETAToPortOfCall="2017-04-
22T19:00:00Z"

PositionInPortOfCall="rade" POBVoyageTowardsPortOfCall="99999">
<LastPort LoCode="NLRTM"/>
<PortOfCall LoCode="FRDKK"/>
<NextPort LoCode="ZZUKN"/>
<HazmatConfirmation HazmatOnBoardYorN="Y"/>
</VoyageInformation>
</ActiveVoyages>
<ActiveVoyages>
<VesselIdentification IMONumber="9321093"
MMSINumber="244850854" CallSign="PBOJ" ShipName="FWN SOLIDE"
Flag="GB"

CSDID="153139"/>
<VoyageInformation SSNVoyageID="2037153#FI"
ShipCallID="2037153" ETAToPortOfCall="2017-04-24T14:00:00Z"
POBVoyageTowardsPortOfCall="12">
<LastPort LoCode="DKEBJ"/>
<PortOfCall LoCode="FIRAA"/>
<NextPort LoCode="ZZUKN"/>
<HazmatConfirmation HazmatOnBoardYorN="N"/>
<WasteConfirmation WasteDeliveryStatus="Some"/>
<SecurityConfirmation CurrentSecurityLevel="SL1"/>
</VoyageInformation>
</ActiveVoyages>
<ActiveVoyages>
<VesselIdentification IMONumber="9323857"
MMSINumber="247149100" CallSign="IBSY" ShipName="BASILUZZO M."
Flag="IT" CSDID="153193"/>
<VoyageInformation SSNVoyageID="VTS_ITRAN17001232#IT"
ShipCallID="VTS_ITRAN17001232" ETAToPortOfCall="2017-04-
24T05:00:00Z"

ATAPortOfCall="2017-04-24T06:04:00Z" ETAToNextPort="2017-04-
28T21:00:00Z"

POBVoyageTowardsPortOfCall="17">
<LastPort LoCode="ITGOA"/>
<PortOfCall LoCode="ITRAN"/>
<NextPort LoCode="ITGOA"/>
<HazmatConfirmation HazmatOnBoardYorN="N"/>
<WasteConfirmation WasteDeliveryStatus="Some"/>
</VoyageInformation>
</ActiveVoyages>
</EnrichmentResults>
</Body>
</SSN2SEG_Enrichment_Res>

```


3.5.5 SSN2SEG_Exemption_Res.xml message

The SSN2SEG_Exemption_Resmessage is the response sent by SafeSeaNet to a maritime application external to SSN EIS (e.g. STIRES, SEG or, if so decided, an MS application) (*data requester*).

3.5.5.1 Message description

The following table describes the XML message used for the transaction.

Elements	Attributes	Occ
Body		1
ActiveExemptions		0-∞
VesselIdentification		1
CSDID		1
IMONumber		0-1
MMSINumber		0-1
CallSign		0-1
ShipName		0-1
IR_Number		0-1
XR_Number		0-1
ER_Number		0-1
Flag		0-1
ExemptionDetails		1
ExemptionType		1
CompanyName		1
DateFrom		1
DateTo		1
Route		1-∞
Port		1
ExemptedWasteTypes		0-∞
WasteCode		1
WasteDescription		0-1
ExemptionAppliesTo		0-∞
Port		1
ExemptedPortFacilities		0-∞
PortFacilityLocode		1
PortFacility		1
Authority		1
Country		1
AuthorityType		1
AuthorityName		1
Contact24/7		1
FirstName		0-1

Elements				Attributes	Occ
				LastName	0-1
				LoCode	0-1
				Phone	0-1
				Fax	0-1
				EMail	0-1

3.5.5.2 Business rules

The following table describes the XML message used for the transaction and the applicable business rules. The detailed definition of the attributes is included in [R2] Annex A.

Item (element or sub-element or specific attribute)	Occ	Description
Body	0-1	Mandatory unless StatusCode="InvalidFormat"
ActiveExemptions	0-∞	- It includes the results of the query. - Not provided if the query has no result.
ExemptionID	1	
Source	1	
ProviderOfLastUpdate	0-1	As indicated in the From attribute of the latest Exemption notification
LastUpdateReceivedAt	0-1	Date and time of receipt of the latest Exemption notification
VesselIdentification	1	
IMONumber	0-1	
MMSINumber	0-1	
CallSign	0-1	
ShipName	0-1	
Flag	0-1	
ExemptionDetails	1	
ExemptionType	1	
CompanyName	1	
DateFrom	1	
DateTo	1	
Route	1-∞	
Port	1	
ExemptedWasteTypes	0-∞	
WasteCode	1	
WasteDescription	0-1	
ExemptionAppliesTo	0-∞	Following V3-V4 transition period, at least one port should be identified,
Port	1	
ExemptedPortFacilities	0-∞	
PortFacilityLocode	1	
PortFacility	1	

Item (element or sub-element or specific attribute)	Occ	Description
Authority	1	
Country	1	
AuthorityType	1	
AuthorityName	1	
Contact24/7	1	
FirstName	0-1	
LastName	0-1	
LoCode	0-1	
Phone	0-1	
Fax	0-1	
EMail	0-1	

3.5.5.3 Example message(s)

The following example illustrates the details of response messages of the SSN2SEG_Exemption_Res.xml type:

```
<SSN2SEG_Exemption_Res xmlns="urn:eu.emsa.ssn.voyage"
  xmlns:ssn="urn:eu.emsa.ssn" xmlns:xsi="http://www.w3.org/2001/XMLSchema-instance"
  xsi:schemaLocation="urn:eu.emsa.ssn.voyage seg_4_0.xsd">
  <Body>
    <ActiveExemptions ExemptionID="EUKgXtyizHmA94">
      <VesselIdentification IMONumber="9086588"
        MMSINumber="311007200" CallSign="C6XF4" ShipName="SKANIA"
        CSDID="20087"/>
      <ExemptionDetails ExemptionType="Waste" CompanyName="ii"
        DateFrom="2016-12-10Z" DateTo="2017-12-10Z">
        <ssn:Route Port="GRAGE"/>
        <ssn:Route Port="GRPIR"/>
        <ssn:Authority Country="EU" AuthorityType="NCA"
          AuthorityName="SafeSeaNet"/>
        <ssn:Contact247 FirstName="SafeSeaNet" LastName="EMSA"
          LoCode="EUCOM" Phone="+351211209415" Fax="+351211209415"
          EMail="Grigoris.SAXIONIS@intrasoft-intl.com"/>
      </ExemptionDetails>
    </ActiveExemptions>
    <ActiveExemptions ExemptionID="SI00000031">
      <VesselIdentification IMONumber="9250062"
        CallSign="IYVQ" ShipName="G.DALLA PORTA" CSDID="42169"/>
      <ExemptionDetails ExemptionType="Hazmat"
        CompanyName="FINSHIP" DateFrom="2016-01-08Z" DateTo="2017-01-08Z">
        <ssn:Route Port="ITRAN"/>
        <ssn:Route Port="ITVCE"/>
        <ssn:Authority Country="SI" AuthorityType="NCA"
          AuthorityName="MRCC KOPER"/>
        <ssn:Contact247 FirstName="PRIMOZ" LastName="BAJEC"
```

```

                                LoCode="SIKOP" Phone="+38656632108" Fax="+38656632110"
E-Mail="koper.mrcc@gov.si"/>
    </ExemptionDetails>
  </ActiveExemptions>
  <ActiveExemptions ExemptionID="GR00000001">
    <VesselIdentification IMONumber="2683674"
      MMSINumber="312617000" CallSign="STORSAN" ShipName="LADY M."
CSDID="65917"/>
    <ExemptionDetails ExemptionType="WasteFees"
      CompanyName="GRMAR" DateFrom="2016-01-08Z" DateTo="2017-01-08Z">
      <ssn:Route Port="ITRAN"/>
      <ssn:Route Port="ITVCE"/>
      <ssn:ExemptedWasteTypes WasteCode="1200"
        WasteDescription="test"/>
      <ssn:ExemptionAppliesTo Port="ITRAN">
        <ssn:ExemptedPortFacilities
          PortFacilityLocode="ITRAN" PortFacility="0001"/>
      </ssn:ExemptionAppliesTo>
      <ssn:Authority Country="GR" AuthorityType="NCA"
        AuthorityName="Maritime Information Traffic Unit"/>
      <ssn:Contact247 FirstName="Test"
        LoCode="GRPIR" Phone="+302104191761" Fax="+302104191761"
E-Mail="test.piraeus@gov.gr"/>
    </ExemptionDetails>
  </ActiveExemptions>
</Body>
</SSN2SEG_Exemption_Res>
```

APPENDIX A: ATTRIBUTES AND SIMPLE TYPES USED IN MESSAGES EXCHANGED

Attribute name	Type	Len	Description and general rules	Message(s) that the attribute is included
ActionTaken	Text	1-256	Free text entry. Description of the action(s) taken	ES2SSN_IncidentDetail_Not SSN2ES_IncidentReport_Res
ActionRequestedDetail	Text	1-256	Content of the action requested to the recipient MS	ES2SSN_IncidentDetail_Not SSN2ES_IncidentReport_Res
Activity	ENUM		Description of ship-to-ship activity performed defined using the EDIFACT codes (8025)	SSN2ES_ShipCall_Res
AdditionalInformation	Text	1-256	Any additional information regarding dangerous and polluting goods on board.	SSN2ES_ShipCall_Res
AgentName	Text	1-50	Name of the organisation representing the ship in the context of the call in the port.	SSN2ES_ShipCall_Res
Anchorage	ENUM		Indicates whether the ship is at anchorage. Possible values (at "sent-at" time): Y : Ship at anchorage N : Ship to berth	SSN2ES_ShipCall_Res
AnyDG	ENUM		Used to report any dangerous or polluting goods (DPG) on board. Possible values: Y : declares that DPG is on board N : declares that there is no DPG	SSN2ES_Ship_Res SSN2SEG_Enrichment_Res

Attribute name	Type	Len	Description and general rules	Message(s) that the attribute is included
			X : to be quoted in the SSN2ES_Ship_Res.xml in case the notification provided is compliant to SSN v2	
AOI	Text	1-350	This is used to report the WETREP specific information (e.g. information on oil cargo types, quantity, grades and density under designator "P"). It can also be used to provide other cargo-related data which is considered as essential by the data provider	SSN2ES_Ship_Res
ApprovedSecurityPlan	ENUM		Indicates if the ship has an approved security plan on board. This is a yes (Y) /no (N) data element.	SSN2ES_ShipCall_Res
AssociatedIncidentID	Text	1-20	IncidentID identification number of an Incident Report which is associated to the current Incident Report. The format is in accordance with the IncidentID.	ES2SSN_IncidentDetail_Not SSN2ES_IncidentReport_Res
ATAPortOfCall	DT		Date and time in of the actual time of arrival at port of call.	SSN2ES_ShipCall_Res SSN2SEG_Enrichment_Res
ATDPortOfCall	DT		Date and time of the actual time of departure from the port of call	SSN2ES_ShipCall_Res SSN2SEG_Enrichment_Res
AuthorityName	Text	1-100	Name of the reporting Authority or Authority granting the exemption	SSN2ES_ShipCall_Res ES2SSN_IncidentDetail_Not SSN2ES_IncidentReport_Res SSN2SEG_Exemption_Res
AuthorityType	ENUM		Type of the Authority granting the exemption. Possible value: NCA – National Competent Authority POR – Port Authority OTH - Other	SSN2ES_ShipCall_Res SSN2SEG_Exemption_Res
Base64Content	base64		Base64-encoded characters of the notification details downloaded by SafeSeaNet.	ES2SSN_IncidentDetail_Not SSN2ES_IncidentReport_Res

Attribute name	Type	Len	Description and general rules	Message(s) that the attribute is included
Bearing	Text	1-20	Indicated in the 360 degrees notation from true north and shall be that of the position from the mark.	ES2SSN_IncidentDetail_Not SSN2ES_IncidentReport_Res
BriefCargoDescription	Text	1-256	This is a short text giving an overview of what cargo the ship carries. This shall also contain brief details of any harmful substances and gases that could endanger persons or the environment.	SSN2ES_ShipCall_Res
BunkerDescription	Text	1-25	Free text description of bunkers in case BunkersType="Other".	SSN2ES_ShipCall_Res
BunkersReportedYorN	ENUM		Bunkers information reported Yes/ No status code. Possible values: Y – declares that Bunkers information has been reported N – declares that there is no Bunkers information reported	SSN2ES_ShipCall_Res SSN2SEG_Enrichment_Res
BunkerType	ENUM		Attribute contains the category of bunkers declared. Possible values: MGO - marine gas oil MDO - marine diesel oil IFO - intermediate fuel oil MFO - marine fuel oil HFO - heavy fuel oil LPG - liquefied petroleum gas LNG - liquefied natural gas LO - lubrication oil Other – any other type of bunkers	SSN2ES_ShipCall_Res
CallPurposeCode	ENUM		Primary purpose of the call defined using the EDIFACT codes (8025)	SSN2ES_ShipCall_Res
CallSign	Text	0-7	Call sign of the vessel	

Attribute name	Type	Len	Description and general rules	Message(s) that the attribute is included
				SSN2ES_Ship_Res SSN2ES_ShipCall_Res ES2SSN_IncidentDetail_Not ES2SSN_IncidentReport_Req SSN2ES_IncidentReport_Res SSN2SEG_Enrichment_Res SSN2SEG_Exemption_Res
CargoLeaking	Text	1-20	Yes/No/Not visible Description of Pollution	ES2SSN_IncidentDetail_Not SSN2ES_IncidentReport_Res
CargoType	Text	0-255	Free text entry. Type of cargo.	SSN2ES_Ship_Res
CargoVolumeNature	Text	0-256	Free text entry identifying the volume and nature of the cargo.	SSN2ES_ShipCall_Res
CertificateNumber	Text	1-35	Number of the certification of registry	SSN2ES_ShipCall_Res
ConditionCargoBallastTanks	Text	0-256	Free text entry identifying the condition of the cargo and ballast tanks (e.g. full, empty, inerted etc.)	SSN2ES_ShipCall_Res
Chars	Text		Free text entry. Bunker characteristics	SSN2ES_Ship_Res
COG	Int		Course over ground in 1/10° (0-3599; 3600 = not available = default; 3601-4095 = should not be used). Lower value: 0; Upper value: 3600.	SSN2ES_Ship_Res
CompanyName	Text	1-70	Name of ship's operating company, as defined in the ISM code	SSN2ES_ShipCall_Res SSN2SEG_Exemption_Res
Country	Text	2	Alpha-2 (two-digits) in accordance with standard ISO 3166-1	SSN2ES_ShipCall_Res SSN2SEG_Exemption_Res

<i>Attribute name</i>	<i>Type</i>	<i>Len</i>	<i>Description and general rules</i>	<i>Message(s) that the attribute is included</i>
CSDID	Text		Unique identifier associated to all the information available for this particular ship.	ES2SSN_ShipCall_Req SSN2ES_ShipCall_Res SSN2SEG_Enrichment_Res SSN2SEG_Exemption_Res
CSTIdentification	Text	1-30	CST responsible for receiving ship-to-shore MRS reports. It starts with Alpha-2 code (two-digits) in accordance with the standard ISO 3166-1. The full list of the relevant CSTs will be included in the "MRS Guidelines" and regularly updated when needed.	SSN2ES_Ship_Res SSN2SEG_Enrichment_Res
CurrentSecurityLevel	ENUM		Ship's current security level according to the ISPS code. Possible values: " SL1 ", " SL2 " and " SL3 "	SSN2ES_ShipCall_Res SSN2SEG_Enrichment_Res
D_NumberOfPersons	Int		Number of persons on board. 99999 if actually unknown. The value 0 (Zero) is allowed in situations where SITREP refers to a vessel that has been fully evacuated. Note that type "INT" prohibits the use of dots and commas" to bring it in line with other persons on board fields.	ES2SSN_IncidentDetail_Not SSN2ES_IncidentReport_Res
D_NumberOfPersonsAtRisk	Int		Number of persons at risk. 99999 if actually unknown. The value 0 (Zero) is allowed in situations where SITREP refers to a vessel that has been fully evacuated. Note that type "INT" prohibits the use of dots and commas" to bring it in line with other persons on board fields.	ES2SSN_IncidentDetail_Not SSN2ES_IncidentReport_Res
DateFrom	Date		Indicates the date when an activity was initiated.	SSN2ES_ShipCall_Res SSN2SEG_Exemption_Res
DateOfArrival	Date		Actual date of arrival.	SSN2ES_ShipCall_Res
DateOfDeparture	Date		Actual date of departure.	SSN2ES_ShipCall_Res
DateTimeReportAction	DT		Date and time when the action report is provided. If local time is used MS application has to adjust the time to UTC.	ES2SSN_IncidentDetail_Not SSN2ES_IncidentReport_Res

<i>Attribute name</i>	<i>Type</i>	<i>Len</i>	<i>Description and general rules</i>	<i>Message(s) that the attribute is included</i>
DateTimeReportLostFoundObject	DT		Date and time when the observation about lost / found objects takes place. If local time is used MS application has to adjust the time to UTC.	ES2SSN_IncidentDetail_Not SSN2ES_IncidentReport_Res
DateTo	Date		Indicates the date when an activity was concluded.	SSN2ES_ShipCall_Res SSN2SEG_Exemption_Res
Deficiencies	Text	1-256	Free text entry. Deficiencies found during inspection.	ES2SSN_IncidentDetail_Not SSN2ES_IncidentReport_Res
DescribeVessel	Text	1-50	Free text entry. Possibility to provide information on vessels without IMO or MMSI (e.g. pleasure craft, fishing vessels...)	ES2SSN_IncidentDetail_Not SSN2ES_IncidentReport_Res
Description	Text	1-512	Description of a container: dimension, color, marks, numbers, condition	ES2SSN_IncidentDetail_Not SSN2ES_IncidentReport_Res
Details	Text	1-512	Free text entry. Description of the incident.	ES2SSN_IncidentDetail_Not SSN2ES_IncidentReport_Res
Direction	Text	1-20	Indicates wind direction in degrees.	ES2SSN_IncidentDetail_Not SSN2ES_IncidentReport_Res
Distance	Text	1-20	Indicates distance in nautical miles.	ES2SSN_IncidentDetail_Not SSN2ES_IncidentReport_Res
DistributionFeedback_yes_no	ENUM		Distribute feedback Yes/ No. Possible value: Y – yes, feedback received will be distributed N – no, feedback received will not be distributed	ES2SSN_IncidentDetail_No
DistributionIR_yes_no	ENUM		Distribute Incident Report Yes/ No. Possible value: Y – yes, incident report will be distributed N – no, incident report will not be distributed	ES2SSN_IncidentDetail_Not
DGClassification	ENUM		Attribute contains the information in which IMO Code(s) DG must be declared	SSN2ES_ShipCall_Res

Attribute name	Type	Len	Description and general rules	Message(s) that the attribute is included
			Values: "IMDG", "IGC", "IBC", "MARPOL_ANNEX1", "IMSBC" "X": to be quoted in the SSN2ES_ShipCall_Res.xml in case the notification provided is compliant to SSN v2, without information	
DocType	ENUM		Type of document format among the following possible values: DocType: DOC -> Extensions allowed: MS WORD 97 or subsequent versions (e.g. DOC, DOCX,DOT, RTF, etc) DocType: HTML -> Extensions allowed: HTM, HTML DocType: PDF -> Extensions allowed: PDF DocType: TXT -> Extensions allowed: TXT DocType: XML -> Extensions allowed: XML DocType: XLS -> Extensions allowed: MS EXCEL 97 or subsequent versions (e.g. XLS, , etc)	SSN2ES_ShipCall_Res ES2SSN_IncidentDetail_Not SSN2ES_IncidentReport_Res
DriftCourse	Text	1-20	Indicates the drift course of pollution in degrees	ES2SSN_IncidentDetail_Not SSN2ES_IncidentReport_Res
DriftSpeed	Text	1-20	Indicates the drift speed of pollution in knots and tenths of knots. In cases of air pollution (gas cloud), drift speed should be indicated in m/sec	ES2SSN_IncidentDetail_Not SSN2ES_IncidentReport_Res
E_AssistanceRequired	Text	1-20	Free text entry. Type of assistance required	ES2SSN_IncidentDetail_Not SSN2ES_IncidentReport_Res
EMail	Text	0-50	Email address of the contact person	SSN2ES_Ship_Res SSN2ES_ShipCall_Res ES2SSN_IncidentDetail_Not SSN2ES_IncidentReport_Res SSN2SEG_Exemption_Res
EmSNumber	Text	1-50	This refers to the relevant emergency schedules for fire and spillage in "The EmS Guide – Emergency Response Procedures for Ships Carrying Dangerous Goods"	SSN2ES_ShipCall_Res

<i>Attribute name</i>	<i>Type</i>	<i>Len</i>	<i>Description and general rules</i>	<i>Message(s) that the attribute is included</i>
EndDateTime	DT		Ending point of a time window declared to define a query	ES2SSN_ShipCall_Req SSN2ES_ShipCall_Res ES2SSN_IncidentReport_Req SSN2ES_IncidentReport_Res
ER_Number	Text	0-12	EMSA vessel Registration number.	SSN2SEG_Enrichment_Res SSN2SEG_Exemption_Res
ETA	DT		Date and time of the estimated time of arrival at Next Port of Call	SSN2ES_Ship_Res SSN2SEG_Enrichment_Res
ETAToNextPort	DT		Date and time of estimated time of arrival to the subsequent port of call.	SSN2ES_ShipCall_Res SSN2SEG_Enrichment_Res
ETAToPortOfCall	DT		Date and time of the estimated time of arrival at port of call	SSN2ES_ShipCall_Res SSN2SEG_Enrichment_Res
ETD	DT		Date and time of the estimated time of departure from Next Port of Call	ES2SSN_IncidentDetail_Not SSN2ES_IncidentReport_Res
ETDFromLastPort	DT		Date and time of the estimated time of departure from the last port of Call	SSN2ES_ShipCall_Res
ETDFromPortOfCall	DT		Date and time of the estimated time of departure from port of call	SSN2ES_ShipCall_Res
ESRefId	Text	1-36	Reference identifier specified by the original caller. It will be inserted by SafeSeaNet in the ESRefId attribute of the SSN2ES_Receipt.xml response.	ES2SSN_Ship_Req SSN2ES_Ship_Res ES2SSN_ShipCall_Req SSN2ES_ShipCall_Res

Attribute name	Type	Len	Description and general rules	Message(s) that the attribute is included
				ES2SSN_IncidentDetail_Not ES2SSN_IncidentReport_Req SSN2ES_IncidentReport_Res SSN2SEG_Exemption_Res
ExpiryDate	Date		Date indicating when the certificate expires.	SSN2ES_ShipCall_Res
ExemptionID	Text	1-36	This the identifier of an exemption granted by a Member State to a ship. The value of ExemptionID is defined by the NCA and the NCA guarantees that the value is unique within the MSand that it is preceded by the 2-letter country code.	SSN2SEG_Exemption_Res
ExemptionType	ENUM		Indicates the type of Exemption granted to a scheduled service. Possible value: Pre-Arrival (Article 15 of Directive 2002/59/EC) Hazmat (Article 15 of Directive 2002/59/EC) Security (Article 7 of Regulation (EC) No 725/2004) Waste (Article 9 of Directive 2000/59/EC) [to be removed following the V3-V4 transition] WasteNotification (Article 9 of Directive 2000/59/EC) WasteDelivery (Article 9 of Directive 2000/59/EC) WasteFees (Article 9 of Directive 2000/59/EC)	SSN2ES_ShipCall_Res SSN2SEG_Exemption_Res
F_CoordinatingAuthority	Text	1-80	Name of coordinating Authority	ES2SSN_IncidentDetail_Not SSN2ES_IncidentReport_Res
Fax	Text	1-20	Fax number (country code included) of the contact person.	SSN2ES_Ship_Res SSN2ES_ShipCall_Res ES2SSN_IncidentDetail_Not SSN2ES_IncidentReport_Res SSN2SEG_Exemption_Res

Attribute name	Type	Len	Description and general rules	Message(s) that the attribute is included
FeedbackID	Text	1-20	Country code + 15 characters Country code: Alpha-2 (two-letters) in accordance with standard ISO 3166-1. Country code of the member state providing the Incident Report.	ES2SSN_IncidentDetail_Not SSN2ES_IncidentReport_Res
FeedbackDistributionToFlagState	ENUM	1	Distribute Feedback to flag State(s) if participating to SSN. Possible values: Y – yes, feedback will be distributed to the flag State(s) N - no, feedback will not be distributed to the flag State(s)	ES2SSN_IncidentDetail_Not SSN2ES_IncidentReport_Res
FirstName	Text	0-50	First name of the contact person	SSN2ES_Ship_Res SSN2ES_ShipCall_Res ES2SSN_IncidentDetail_Not SSN2ES_IncidentReport_Res SSN2SEG_Exemption_Res
Flag	ENUM		The Alpha-2 code (two-digits flag code)in accordance with the standard ISO 3166-1.	SSN2ES_ShipCall_Res ES2SSN_IncidentDetail_Not ES2SSN_IncidentReport_Req SSN2ES_IncidentReport_Res SSN2SEG_Enrichment_Res SSN2SEG_Exemption_Res
FlashPoint	Decimal		The temperature in degrees Celsius at which a liquid will give off enough flammable vapour to be ignited. To be provided in degrees Celsius.	SSN2ES_ShipCall_Res
From	Text	7-32	The UserID of the originator of the message (as defined in SafeSeaNet). Best practice for the field is to include the reference identification of the originator of the data included in the message.	ALL messages

Attribute name	Type	Len	Description and general rules	Message(s) that the attribute is included
G_CasualtyDescription	Text	1-256	Free text entry. Physical description, owner/character, cargo carried, passage from/to, life-saving equipment carried	ES2SSN_IncidentDetail_Not SSN2ES_IncidentReport_Res
GeographicalArea	Text	1-50	Geographical area name	ES2SSN_IncidentDetail_Not SSN2ES_IncidentReport_Res
GetBunkers	ENUM		Definition of the level of details for a Bunkers response. Possible value: BunkersDetails (Bunkers "full" version)	ES2SSN_ShipCall_Req SSN2ES_ShipCall_Res
GetDetails	ENUM		Definition of the data query to be processed through a request message. The quotation of the value relates to a specific combination of search criteria that has to be defined for the query to be executed. Possible values are listed in 3.2.3.3	ES2SSN_ShipCall_Req SSN2ES_ShipCall_Res
GetHazmat	ENUM		Definition of the level of details for a Hazmat response. Possible values: HazmatSummary (HAZMAT "lite" version) HazmatDetails (HAZMAT "full" version) Although the response message should include the hazmat information of the specific ShipCall listed by the query (depending on the value of the GetDetails attribute), however it is important to note that the Call for which data are requested might differ from the latest registered to the national SSN system based on the SentAt value in the notification	ES2SSN_ShipCall_Req SSN2ES_ShipCall_Res
GetIRInformation	ENUM		Possible values: - AllIRsOfSelectedShip - SpecificTypesIRsOfSelectedShip - IRsForSpecificPort - GetSpecificIR	ES2SSN_IncidentReport_Req SSN2ES_IncidentReport_Res
GetWaste	ENUM		Definition of the level of details for a Waste response.	ES2SSN_ShipCall_Req

Attribute name	Type	Len	Description and general rules	Message(s) that the attribute is included
			Possible values: WasteSummary (Waste "lite" version) WasteDetails (Waste "full" version)	SSN2ES_ShipCall_Res
GetSecurity	ENUM		Definition of the level of details for a Security response. Possible values: SecuritySummary (Security "lite" version) SecurityDetails (Security "full" version)	ES2SSN_ShipCall_Req SSN2ES_ShipCall_Res
GrossTonnage	Decimal	(3)	The measure of the overall size of a ship determined in accordance with the provisions of the International Convention on Tonnage Measurement of Ships, 1969	SSN2ES_ShipCall_Res
H_WeatherOnScene	Text	1-256	Weather on scene. Wind, sea/swell state, air/sea temperature, visibility, cloud cover/.ceiling, barometric pressure	ES2SSN_IncidentDetail_Not SSN2ES_IncidentReport_Res
HazmatOnBoardYorN	ENUM		A Hazmat-on-board Yes/ No status code. Possible value: Y – declares that Hazmat cargo is onboard N – declares that there is no Hazmat cargo onboard	SSN2ES_ShipCall_Res SSN2SEG_Enrichment_Res
HomePort	Text	1-20	Location code.	ES2SSN_IncidentDetail_Not SSN2ES_IncidentReport_Res
IMOCClass	Text	1-7	The value is as specified in the ShipCall messages for "IMOHazardClass" attribute	SSN2ES_Ship_Res
IMOCompanyNr	Text	7	Identification number of an organization according to a database of IMO Registered Owner or Company (DOC) number	SSN2ES_ShipCall_Res
IMOHazardClass	Text	1-7	IMO Hazard class (IMDG-IBC-IMSBC codes) of DPG	SSN2ES_ShipCall_Res

Attribute name	Type	Len	Description and general rules	Message(s) that the attribute is included
IMONumber	Text	7	IMO number – IMO Res. A.600 (15)	ALL messages except from SSN2ES_Receipt and _Ack
INFShipClass	ENUM		Code for the license of the vessel according to the INF Code (Code for the Safe Carriage of Irradiated Nuclear Fuel, Plutonium and High-level Radioactive Wastes in Flasks on board Ships). Possible values are: <ul style="list-style-type: none"> INF1 (Class INF 1) INF2 (Class INF 2) INF3 (Class INF3) 	SSN2ES_ShipCall_Res
IncidentID	Text	1-20	Country code +15 characters Country code: Alpha-2 (two-letters) in accordance with standard ISO 3166-1. Country code of the member state providing the Incident Report.	ES2SSN_IncidentDetail_Not SSN2ES_IncidentDetail_Tx_Ack SSN2ES_IncidentReport_Res ES2SSN_IncidentReport_Req SSN2SEG_Enrichment_Res
Inmarsat	Text	1-50	Number indicating the location of the ship by satellite services of Inmarsat Note: the following characters are not accepted: ',' '&' '_'	SSN2ES_ShipCall_Res
InspectionReason	Text	1-256	Reasons why the ship should be inspected in next port and any other relevant information.	ES2SSN_IncidentDetail_Not SSN2ES_IncidentReport_Res
IR_Number	Text	12	EU fishing vessel Registration number (CFR field). Pattern [a-zA-Z]{3}[0-9]{0,9}	SSN2SEG_Enrichment_Res SSN2SEG_Exemption_Res
IRDistributionToFlagState	ENUM	1	Distribute Incident Report to flag state(s) if participating to SSN. Possible value: Y – yes, incident report will be distributed to flag State(s) N – no, incident report will not be distributed to flag State(s)	ES2SSN_IncidentDetail_Not SSN2ES_IncidentReport_Res
IRNumber_FishingVessel	Text	12	EU fishing vessel Registration number (CFR field)	ES2SSN_IncidentDetail_Not ES2SSN_IncidentReport_Req SSN2ES_IncidentReport_Res

Attribute name	Type	Len	Description and general rules	Message(s) that the attribute is included
ISSCType	ENUM		To indicate if the ship is provided with an International Ship Security Certificate or an Interim International Ship Security Certificate. Possible values: " Full ", " Interim "	SSN2ES_ShipCall_Res
IssueDate	Date		Date indicating when the certificate was issued.	SSN2ES_ShipCall_Res
Issuer	Text	1-256	Name of the issuing body.	SSN2ES_ShipCall_Res
IssuerType	ENUM		To indicate the type of ISSC issuing authority. Possible values: " GVT " (Contracting Government), " RSO " (Recognized Security Organization)	SSN2ES_ShipCall_Res
J_InitialActionTaken	Text	1-256	Initial actions taken by casualty and RCC	ES2SSN_IncidentDetail_Not SSN2ES_IncidentReport_Res
K_SearchArea	Text	1-80	Search area as planned by RCC	ES2SSN_IncidentDetail_Not SSN2ES_IncidentReport_Res
L_CoordinatingInstructions	Text	1-256	OSC designated, units participating, communications	ES2SSN_IncidentDetail_Not SSN2ES_IncidentReport_Res
LastName	Text	0-50	Last name of the contact person	SSN2ES_Ship_Res SSN2ES_ShipCall_Res ES2SSN_IncidentDetail_Not SSN2ES_IncidentReport_Res SSN2SEG_Exemption_Res
LastPort	Text	5	This attribute indicates the last port of Call of the vessel (the port of departure for the voyage towards the Port of Call). The port is identified by its 5-digit LOCODE	SSN2ES_ShipCall_Res
LastPortDelivered	Text	5	Last port where ship-generated waste was delivered The port is identified by its 5-digit LOCODE	SSN2ES_ShipCall_Res

<i>Attribute name</i>	<i>Type</i>	<i>Len</i>	<i>Description and general rules</i>	<i>Message(s) that the attribute is included</i>
LastPortDeliveredDate	Date		Last date when ship-generated waste was delivered	SSN2ES_ShipCall_Res
LastUpdateReceivedAt	DT		Identifies the date/time when the information was last updated to the data requestor. If local time is used MS application has to adjust the time to UTC.	SSN2ES_ShipCall_Res
Latitude	Int		Latitude in 1/10000 min. (+/- 90 degrees; North = positive; South = negative; 91 = not available) 91° (north) -> 54600000 -90° (south) -> -54000000 0°0'1" (north) -> 167 50°50' (north) -> 30500000	SSN2ES_Ship_Res SSN2ES_ShipCall_Res ES2SSN_IncidentDetail_Not SSN2ES_IncidentReport_Res SSN2SEG_Enrichment_Res
LocationName	Text	0-256	The port or location is identified by its name in free text	SSN2ES_ShipCall_Res SSN2SEG_Enrichment_Res
LocationOnBoard	Text	1-25	▪ For guidance refer to SSN Guidelines on Reporting HAZMAT.	SSN2ES_ShipCall_Res
LoCode	Text	5	Location code of the contact person or company. Can be any LOCODE listed in the UNECE LOCODE list (i.e. not only LOCODES of ports) or any LOCODE listed in the SSN specific LOCODE list of EMSA	SSN2ES_Ship_Res SSN2ES_ShipCall_Res ES2SSN_IncidentDetail_Not SSN2ES_IncidentReport_Res SSN2SEG_Enrichment_Res SSN2SEG_Exemption_Res

Attribute name	Type	Len	Description and general rules	Message(s) that the attribute is included
Longitude	Int		Longitude in 1/10000 min. (+/- 180 degrees; East = positive; West = negative; 181 = not available). Examples: 181° (east) -> 108600000 -180° (west) -> -108000000 0°0'1" (east) -> 167 4°20' (east) -> 2600000	SSN2ES_Ship_Res SSN2ES_ShipCall_Res ES2SSN_IncidentDetail_Not SSN2ES_IncidentReport_Res SSN2SEG_Enrichment_Res
M_FuturePlans	Text	1-256	Free text entry.	ES2SSN_IncidentDetail_Not SSN2ES_IncidentReport_Res
Mark	Text	1-256	Free text entry. Reference point to which the bearing and distance is applied (e.g. Buoy n.3 entrance to the port of Lisbon)	ES2SSN_IncidentDetail_Not SSN2ES_IncidentReport_Res
MarpolCode	ENUM		As defined in MARPOL Annex II, IBC code, Marpol Annex III and IMDG codePossible values: "X", "Y", "Z", "OS", "P" and "UNKNOWN". [value "UNKNOWN" to be removed following the V3-V4 transition]	SSN2ES_ShipCall_Res
MessageType	ENUM		SITREP Alert Information Situation message type. Supported message type. Possible values are: - Distress - Urgency	ES2SSN_IncidentDetail_Not SSN2ES_IncidentReport_Res
MMSINumber	Text	9	MMSI number of the vessel. MID according to the ITU regulation. Length of the MMSI number should always be 9	ALL messages
MRSIdentification	Text	1-15	MRS as defined by IMO requirements which the notification is referred to. The list covers the existing MRS established along EU waters and for the time being is the following: • ADRIREP • BELTREP • BONIFREP	ES2SSN_Ship_Req SSN2ES_Ship_Res SSN2SEG_Enrichment_Res

Attribute name	Type	Len	Description and general rules	Message(s) that the attribute is included
			<ul style="list-style-type: none"> • CALDOVREP • CANREP • COPREP • FINREP • GDANREP • GIBREP • GOFREP • GREENPOS • MANCHREP • OUESSREP • SOUNDREP • TRANSREP • WETREP • BAREP <p>The full list will be included in the "MRS Guidelines" and regularly updated when needed.</p> <p>In the SSN2ES_Ship_Res.xml this attribute will report "undefined" in case the notification provided is compliant to SSN v2</p>	
MsRefIDofIRupdate	Text	1-36	Reference identifier specified by the original data provider of the ES2SSNIncidentDetail_Not.	SSN2ES_IncidentDetail_Tx_Ack
N_AdditionalInformation	Text	1-256	Include time SAR operation terminated	ES2SSN_IncidentDetail_Not SSN2ES_IncidentReport_Res
Name	Text	1-80	Name of the inspection authority or name of other states and organisations informed in case of an incident.	ES2SSN_IncidentDetail_Not SSN2ES_IncidentReport_Res
Nature	ENUM		Nature of distress/urgency. Possible values are:	ES2SSN_IncidentDetail_Not

Attribute name	Type	Len	Description and general rules	Message(s) that the attribute is included
			<ul style="list-style-type: none"> - Fire - Collision - Medico* - Grounding - Flooding - List - Capsizing - EngineFailure - StructuralFailure - SteeringGearFailure - ElectricalGeneratingSystemFailure - NavigationEquipmentFailure - CommunicationEquipmentFailure - AbandonShip - ShiftingOfCargo - Sinking - Other <p>The data provider will need to determine which value best describes a particular incident with respect of Directive 2002/59 requirement to report incidents or accidents that affect the safety of the ship or of shipping.</p> <p>*It should be noted that Medical Evacuation is not found within the examples in Article 17 and a SITREP with Nature "Medico" would not be used to report a Medical Evacuation from a vessel unless the evacuation had a direct effect on the safety of the ship or shipping (for example if the individual evacuated was key member of crew and their absence from the vessel compromised it safe manning)</p>	SSN2ES_IncidentReport_Res
NavigationalStatus	ENUM		One of the following possible values:	

Attribute name	Type	Len	Description and general rules	Message(s) that the attribute is included
			<ul style="list-style-type: none"> - 0 (under way using engine) - 1 (at anchor) - 2 (not under command) - 3 (restricted manoeuvrability) - 4 (constrained by her draught) - 5 (moored) - 6 (aground) - 7 (engaged in fishing) - 8 (under way sailing) - 9 till 14 (reserved -> should not be used) - 15 (not defined) 	SSN2ES_Ship_Res
NextPort	Text	5	<p>When referring to a specific leg of a voyage, the next port is the next port to be visited after the leg's arrival port (i.e. after the port of call). When referring to a port stay, the next port of call is the arrival port for the next leg leading from this port.</p> <p>The port is identified by its 5-digit LOCODE</p>	SSN2ES_ShipCall_Res
NextPortOfCall	Text	5	<p>This attribute indicates the actual port of call, e.g. if the port of Oostende is sending this notification, then this PortOfCall attribute must be the location code of Oostende (BEOST) and not the next port of call after Oostende.</p> <p>The "port of call" attribute cannot be unknown ("ZZUKN"). The "port of call" attribute must only be the LOCODE of the specific port of call or its dependent port's LOCODE</p>	<p>SSN2ES_Ship_Res</p> <p>SSN2SEG_Enrichment_Res</p>
NoOfPackages	Int		This is the number of packages covered by this cargo item in a specific location on board or in a cargo unit.	SSN2ES_ShipCall_Res

<i>Attribute name</i>	<i>Type</i>	<i>Len</i>	<i>Description and general rules</i>	<i>Message(s) that the attribute is included</i>
NotifiedAt	DT		Date and time (ISO 8601 UTC format) when the alert has been notified.	ES2SSN_IncidentDetail_Not SSN2ES_IncidentReport_Res
NumberOfCalls	Int		Specifies the number of ship calls referring to a specific ship in the request message.	ES2SSN_ShipCall_Req SSN2ES_ShipCall_Res
OriginatorID	Text		The user ID of the end-user who is the actual originator of the request submitted by SafeSeaNet Ecosystem GUI to EIS.	All messages
Other	Text	1-50	Free text entry. Any other ship observer identification.	ES2SSN_IncidentDetail_Not SSN2ES_IncidentReport_Res
P1_DateTime	DT		Date and time when the incident took place or, if the cause of the pollution is not known, the time of the observation. If local time is used MS application has to adjust the time to UTC.	ES2SSN_IncidentDetail_Not SSN2ES_IncidentReport_Res
P1_ReportType	ENUM		Supported report type. Possible values are: - Loss - Observation A. Loss (ship having lost a or several containers/packaged goods) B. Observation (ship noting the presence of containers/packages goods drifting at sea)	ES2SSN_IncidentDetail_Not SSN2ES_IncidentReport_Res
P3_Incident	Text	1-256	Incident summary	ES2SSN_IncidentDetail_Not SSN2ES_IncidentReport_Res
P4_NumberOfObjects	Int		Number of objects	ES2SSN_IncidentDetail_Not SSN2ES_IncidentReport_Res
P4_Outflow	Text	1-256	The polluting substance, such as CRUDE OIL, CHLORINE, DINITROL, PHENOL as well as the total quantity in tonnes of the outflow and/or the flow rate, and the risk of further outflow should be mentioned. If there is no pollution, but a threat of pollution, the words NOT YET followed by the substance (for example NOT YET FUEL OIL) should be stated.	ES2SSN_IncidentDetail_Not SSN2ES_IncidentReport_Res

<i>Attribute name</i>	<i>Type</i>	<i>Len</i>	<i>Description and general rules</i>	<i>Message(s) that the attribute is included</i>
P40_DateTime	DT		Date and time. If local time is used MS application has to adjust the time to UTC.	ES2SSN_IncidentDetail_Not SSN2ES_IncidentReport_Res
P41_PollutionPosition	Text	1-256	Indicates the main position of the pollution in degrees and minutes of latitude and longitude, and may in addition give the distance and bearing of some prominent landmark known to the receiver if other than indicated in POLWARN (Position). Estimated amount of pollution (eg size of polluted areas, number of tonnes of oil spilled if other than indicated in POLWARN (Outflow), or number of containers, drums lost). Indicates length and width of slick given in nautical miles if not indicated in POLWARN (Position).	ES2SSN_IncidentDetail_Not SSN2ES_IncidentReport_Res
P42_PollutionChars	Text	1-256	Gives type of pollution, eg type of oil with viscosity and pour point, packaged or bulk chemical, sewage. For chemicals proper name or United Nations number if known should be given. Appearance, eg liquid, floating solid, liquid oil, semi-liquid sludge, tarry lumps, weathered oil, Discolouration of sea, visible vapour should also be given as well as any markings on drums, containers	ES2SSN_IncidentDetail_Not SSN2ES_IncidentReport_Res
P43_PollutionSource	Text	1-256	Indicates the source of pollution eg from vessel or other undertaking. If from vessel, it should be notified whether the pollution is a result of a deliberate discharge or casualty. If the latter, a brief description should be given. Where possible name, type, size, call sign, nationality and port of registration of polluting vessel should be mentioned. If vessel is proceeding on its way, course, speed and destination should be indicated.	ES2SSN_IncidentDetail_Not SSN2ES_IncidentReport_Res
P48_PollutionEffectForecast	Text	1-256	Results of mathematical models could indicate eg. arrival on beach with estimated timing	ES2SSN_IncidentDetail_Not SSN2ES_IncidentReport_Res
P5_Acknowledge	Text	1-20	When this number is used, the message (telefax) should be acknowledged as soon as possible by the competent national authority	ES2SSN_IncidentDetail_Not SSN2ES_IncidentReport_Res
P5_TypeOfGoods	Text	1-256	Recomendation: DG/PG : Y/N IMO/UN/IMDG Code Number	ES2SSN_IncidentDetail_Not SSN2ES_IncidentReport_Res

<i>Attribute name</i>	<i>Type</i>	<i>Len</i>	<i>Description and general rules</i>	<i>Message(s) that the attribute is included</i>
P50_ActionTaken	Text	1-256	Mentions action taken for the disposal of the pollution	ES2SSN_IncidentDetail_Not SSN2ES_IncidentReport_Res
P51_Photosgraphs	Text	1-256	Indicates if photographs or samples from the pollution have been taken. Contact numbers (including telephone, telefax and telex numbers as appropriate) of the sampling authority should be given.	ES2SSN_IncidentDetail_Not SSN2ES_IncidentReport_Res
P53_OtherInformation	Text	1-256	Spare for additional relevant information. eg results of sample or photographic analysis, results of inspections or surveyors, statements of ship's personnel	ES2SSN_IncidentDetail_Not SSN2ES_IncidentReport_Res
P60_Acknowledge	Text	1-20	When this number is used, the message (telefax) should be acknowledged as soon as possible by the competent national authority	ES2SSN_IncidentDetail_Not SSN2ES_IncidentReport_Res
P80_DateTime	DT		Date and time. If local time is used MS application has to adjust the time to UTC.	ES2SSN_IncidentDetail_Not SSN2ES_IncidentReport_Res
P81_RequestForAssistance	Text	1-256	Type and amount of assistance required in form of: - specified equipment - specified equipment with trained personnel - complete strike teams - personnel with special expertise with indication of country requested	ES2SSN_IncidentDetail_Not SSN2ES_IncidentReport_Res
P82_Cost	Text	1-256	Information on cost of delivered assistance to be notified to requesting country.	ES2SSN_IncidentDetail_Not SSN2ES_IncidentReport_Res
P83_PreArrangements	Text	1-256	Information concerning customs clearance, access to territorial waters in the requesting country.	ES2SSN_IncidentDetail_Not SSN2ES_IncidentReport_Res
P84_Delivery	Text	1-256	Information concerning the delivery of the assistance, eg rendez-vous at sea with information on frequencies to be used, call sign and name of Supreme On-Scene Commander of the requesting country or land-based authorities with contact numbers (including telephone, telefax and telex numbers as appropriate) and contact persons.	ES2SSN_IncidentDetail_Not SSN2ES_IncidentReport_Res

Attribute name	Type	Len	Description and general rules	Message(s) that the attribute is included
P86_ChangeOfCommand	Text	1-80	When a substantial part of an oil pollution or serious threat of oil pollution moves or has moved into the zone of another Contracting Party, the country which has exercised the supreme command or the operation may request the other party to take over the supreme command	ES2SSN_IncidentDetail_Not SSN2ES_IncidentReport_Res
P87_ExchangeOfInformation	Text	1-256	When a mutual agreement has been reached between two parties on a change of supreme command, the country transferring the supreme command should give a report on all relevant information pertaining to the operation to the country taking over the command	ES2SSN_IncidentDetail_Not SSN2ES_IncidentReport_Res
P88_OtherInformation	Text	1-256	Spare for any other relevant requirements or instructions.	ES2SSN_IncidentDetail_Not SSN2ES_IncidentReport_Res
P99_Acknowledge	Text	1-20	When this number is used, the message (telefax) should be acknowledged as soon as possible by the competent national authority	ES2SSN_IncidentDetail_Not SSN2ES_IncidentReport_Res
PackageType	ENUM		This is a description of the outer package of the cargo item. Possible values: two-letter alphabetic code of annex VI of UNECE R21. EDIFACT codes (7065)	SSN2ES_ShipCall_Res
PackingGroup	ENUM		May be applicable for some IMDG goods. There are IMDG goods without a packing group. Only applicable for IMO Hazard Class: 3, 4.1, 4.2, 5.1, 6.1, 8, 9. Not every good of these classes has a packing group. Possible values: "I", "II", "III" and "NONE" [value "NONE" to be removed following the V3-V4 transition]	SSN2ES_ShipCall_Res
Phone	Text	1-20	Phone number (country code included) of the contact person.	SSN2ES_Ship_Res SSN2ES_ShipCall_Res ES2SSN_IncidentDetail_Not SSN2ES_IncidentReport_Res SSN2SEG_Exemption_Res

<i>Attribute name</i>	<i>Type</i>	<i>Len</i>	<i>Description and general rules</i>	<i>Message(s) that the attribute is included</i>
PlannedOperations	Text	0-256	Free text in English language describing the planned operations at the port or anchorage (loading, unloading, other)	SSN2ES_ShipCall_Res
PlannedWorks	Text	0-256	Free text in English language describing the planned statutory survey inspections and substantial maintenance and repair work to be carried out whilst in the port or anchorage of destination	SSN2ES_ShipCall_Res
POBVoyageTowardsNextPort	Int		Total number of persons aboard. To be used for notification(s) made along the voyage toward the NextPort. 99999 if actually unknown. The value 0 (Zero) is not allowed. Lower value: 1; Upper value: 99999. Note that the type "INT" prohibits the use of dots and commas	SSN2ES_ShipCall_Res
POBVoyageTowardsPortOfCall	Int		Total number of persons aboard. To be used for notification(s) made along the voyage toward the PortOfCall. 99999 if actually unknown. The value 0 (Zero) is not allowed. Lower value: 1; Upper value: 99999. Note that the type "INT" prohibits the use of dots and commas	SSN2ES_ShipCall_Res SSN2SEG_Enrichment_Res
Port	Text	5	Location code of port of the ship's last calls or scheduled route or exempted port.	SSN2ES_ShipCall_Res SSN2SEG_Exemption_Res
PortDeliveryRemainingWaste	Text	5	Location code of the port where remaining waste will be disposed of.	SSN2ES_ShipCall_Res
PortFacility	Text	1-4	Port Facility as defined in ISPS Code The last 4 digits of the port facility's code as in the IMO GISIS maritime security database. Generic code "0000" to be used in case port facility is: - not ISPS-approved - recently approved but still not included in the GISIS database	SSN2ES_ShipCall_Res SSN2SEG_Exemption_Res
PortFacilityLocode	Text	5	This attribute indicates the port facility Locode (five characters LOCODE) as in the IMO GISIS maritime security database.	SSN2ES_ShipCall_Res SSN2SEG_Exemption_Res

Attribute name	Type	Len	Description and general rules	Message(s) that the attribute is included
PortOfCall	Text	5	This attribute indicates the actual port of call, e.g. if the port of Oostende is sending this notification, then this PortOfCall attribute must be the location code of Oostende (BEOST) and not the next port of call after Oostende. The "port of call" attribute cannot be unknown ("ZZUKN"). The "port of call" attribute must only be the LOCODE of the specific port of call or its dependent port's LOCODE	ES2SSN_ShipCall_Req SSN2ES_ShipCall_Res
PortOfDeparture	Text	5	Location code of port of departure.	ES2SSN_IncidentDetail_Not SSN2ES_IncidentReport_Res
PortOfDepartureQuotedInIR	Text	5	Location code of port of departure quoted in an incident report.	ES2SSN_IncidentReport_Req SSN2ES_IncidentReport_Res
PortOfDestination	Text	5	Location code of port of destination.	ES2SSN_IncidentDetail_Not SSN2ES_IncidentReport_Res
PortOfDestinationQuotedInIR	Text	5	Location code of port of destination quoted in an incident report.	ES2SSN_IncidentReport_Req SSN2ES_IncidentReport_Res
PortOfDischarge	Text	5	Identity of the port where the cargo will be discharged from the ship. The port is identified by its 5-digit LOCODE	SSN2ES_ShipCall_Res
PortOfLoading	Text	5	Identity of the port where the cargo was loaded on board the ship. The port is identified by its 5-digit LOCODE	SSN2ES_ShipCall_Res
PositionInPortOfCall	Text	0-50	Any 50 character free text value will be accepted. However M.S are encouraged to utilise a 15 characters (subsidiary) LOCODE identifying the position of a subsidiary location within the port or port approaches (e.g. a terminal in the port, a berth, an anchorage site, Fairway section code, Fairway section hectometer etc). The subsidiary LOCODES will be maintained within the SSN EIS LOCODE Database for subsidiary locations. The subsidiary LOCODES are provided through the "PositionInPortOfCall" and should follow the structure agreed by MSs during the SSN WS18	SSN2ES_ShipCall_Res SSN2SEG_Enrichment_Res

Attribute name	Type	Len	Description and general rules	Message(s) that the attribute is included																								
			<table><thead><tr><th>Item</th><th>Occ</th><th>Len</th><th>Description</th></tr></thead><tbody><tr><td>PositionInPortOfCall</td><td>0-1</td><td>0-15</td><td></td></tr><tr><td>UN Locode</td><td>1</td><td>5</td><td>UN Locode</td></tr><tr><td>Fairway sectioncode</td><td>0-1</td><td>0-5</td><td>Port Basin or Port area</td></tr><tr><td>Terminal code</td><td>0-1</td><td>0-5</td><td>Terminal code</td></tr><tr><td>Fairway section hectometer</td><td>0-1</td><td>0-5</td><td>Port number or Terminal details</td></tr></tbody></table> <p>The M.S. should notify EMSA the list of subsidiary codes and the locations identified by each LOCODE in order to be registered in the SSN LOCODE Database. The procedure on how to notify is available in LOCODES guidelines</p>	Item	Occ	Len	Description	PositionInPortOfCall	0-1	0-15		UN Locode	1	5	UN Locode	Fairway sectioncode	0-1	0-5	Port Basin or Port area	Terminal code	0-1	0-5	Terminal code	Fairway section hectometer	0-1	0-5	Port number or Terminal details	
Item	Occ	Len	Description																									
PositionInPortOfCall	0-1	0-15																										
UN Locode	1	5	UN Locode																									
Fairway sectioncode	0-1	0-5	Port Basin or Port area																									
Terminal code	0-1	0-5	Terminal code																									
Fairway section hectometer	0-1	0-5	Port number or Terminal details																									
PossibleAnchorage	ENUM		Indicates whether a ship is expected to stay at an anchorage upon arrival at the PortOfCall. "Ship at anchorage" means a ship in a port or another area within the jurisdiction of a port, but not at berth, carrying out a ship/port interface. Possible values (at "sent-at" time): Y : Ship expected to stay at anchorage N : Ship expected to berth	SSN2ES_ShipCall_Res																								
ProviderOfLastUpdate	Text	3-32	Identifies the data provider of the information (UserID as defined in SafeSeaNet) to the data requestor. The lenght allows compatibility between SSN v2 and v3 messages.	SSN2ES_ShipCall_Res																								

<i>Attribute name</i>	<i>Type</i>	<i>Len</i>	<i>Description and general rules</i>	<i>Message(s) that the attribute is included</i>
Quantity	Text	1-18	Free text entry. Indicating Quantity.	SSN2ES_Ship_Res SSN2ES_ShipCall_Res
QuantityGross: Quantity	Decimal	(3)	Gross weight of the dangerous goods including respectively their packing, but without the equipment used by the carrier for their transport.	SSN2ES_ShipCall_Res
QuantityNet: Quantity	Decimal	(3)	Net weight of the dangerous goods excluding respectively their packing, and without the equipment used by the carrier for their transport.	SSN2ES_ShipCall_Res
ReasonForNoValidISSC	Text	1-256	The reasons why the ship has no valid ISSC.	SSN2ES_ShipCall_Res
RecipientCountry	Text	2	Alpha-2 (two-digits) in accordance with standard ISO 3166-1	ES2SSN_IncidentDetail_Not SSN2ES_IncidentDetail_Tx_Ack SSN2ES_IncidentReport_Res
RecipientEmail_Ack	ENUM		OK: receipt acknowledged with status OK. KO: receipt acknowledged with status Not OK.	SSN2ES_IncidentDetail_Tx_Ack
RecipientUser_Email	Text	0-50	Email address of the recipient user	SSN2ES_IncidentDetail_Tx_Ack
RecipientXML_Ack	ENUM		OK: receipt acknowledged with status OK. KO: receipt acknowledged with status Not OK.	SSN2ES_IncidentDetail_Tx_Ack
ReportingDateAndTime	DT		Date and Time of reporting. This time stamp corresponds also to the given position.	SSN2ES_Ship_Res
ReportSequence	Int		Sequence number as defined and used by the coastal station managing the incident. Used for operational purpose. This information is not treated by the system.	ES2SSN_IncidentDetail_Not SSN2ES_IncidentReport_Res
			•	

Attribute name	Type	Len	Description and general rules	Message(s) that the attribute is included
SecurityLevel	ENUM		Ship's security level according to the ISPS code. Possible values: " SL1 ", " SL2 " and " SL3 "	SSN2ES_ShipCall_Res
SecurityMeasures	Text	0-256	Security measures applied in lieu	SSN2ES_ShipCall_Res
SecurityRelatedMatterToReport	Text	0-256	Security related matter to report, if any.	SSN2ES_ShipCall_Res
SenderCountryId	Text	2	The Alpha-2 code (two-digits code) in accordance with the standard ISO 3166-1 defining the country.	ES2SSN_Ship_Req SSN2ES_Ship_Res
SentAt	DT		Date and time the message was sent. If local time is used MS application has to adjust the time to UTC.	ALL messages
ShipCallId	Text	1-36	Reference identifier, unique per MS, assigned by the notifying MS upon sending the first notification related to the ship call. The ShipCallId included in further updates of the initial notification must be the same as in the first notification related to the ship call.	ES2SSN_ShipCall_Req SSN2ES_ShipCall_Res
ShipConfiguration	ENUM		Identifier of the ship configuration: Possible values: SHT – indicating a single hull tanker, SHT-SBT indicating a single hull with segregated ballast tanks (SBT), DHT - indicating a double hull tanker	SSN2ES_ShipCall_Res
ShipName	Text	0-35	Name of the vessel	

Attribute name	Type	Len	Description and general rules	Message(s) that the attribute is included
			Upon SOLAS, chapter I, part B, regulation 15 "Form Certificates", "the particulars inserted in the certificates shall be in Roman characters and Arabic figures". (From "A" to "Z" and from 0 to 9). Additional characters allowed are dots ".", dashes "-" and single apostrophe "'".	SSN2ES_Ship_Res SSN2ES_ShipCall_Res ES2SSN_IncidentDetail_Not ES2SSN_IncidentReport_Req SSN2ES_IncidentReport_Res SSN2SEG_Enrichment_Res SSN2SEG_Exemption_Res
ShipNotType	ENUM		Possible values: - MRS - AIS	ES2SSN_Ship_Req SSN2ES_Ship_Res
ShipType	ENUM		Codes the ship type according to UNECE R28. The actual codes shall be taken from and constructed according to the above reference. The code is a two- or three-digit number without any inserted space.	SSN2ES_ShipCall_Res
SOG	Int		Speed over ground in 1/10 knot steps (0-102.2 knots). 102.3 = not available; 102.2 = 102.2 knots or higher. Example: A value of 893 means 89.3 knots. Lower value: 0; Upper value: 1023.	SSN2ES_Ship_Res
SpecialOrAdditionalSecurityMeasures	Text	0-256	Special or additional security measures taken by the ship.	SSN2ES_ShipCall_Res
Speed	Text	1-20	Indicates speed in m/sec or in knots and tenths of knots depending on the type.	ES2SSN_IncidentDetail_Not SSN2ES_IncidentReport_Res
SSN_ID_AuthorityXML	Text	7-32	Unique identification in SSN of the XML recipient Authority	SSN2ES_IncidentDetail_Tx_Ack
SSNRefId	UUID	1-36	Reference number given by the SafeSeaNet. It must be inserted later by the national SSN system in the SSNRefID attribute of the ES2SSN_<SSN_Tx_type>_Res.xml response and will be used for correlation when SafeSeaNet will receive the response from national SSN system	SSN2ES_Ship_Res SSN2ES_ShipCall_Res

<i>Attribute name</i>	<i>Type</i>	<i>Len</i>	<i>Description and general rules</i>	<i>Message(s) that the attribute is included</i>
				SSN2ES_IncidentReport_Res SSN2ES_Receipt
SSNUserID	Text	3-32	A valid SSN unique user Identifier. The lenght allows compatibility between SSN v2 and v3 messages.	ES2SSN_IncidentDetail_Not SSN2ES_IncidentReport_Res
SSNVoyageID	Text	1-36	Unique reference identifier related to the ship call (Concatenation of ShipCallId and country code of notifying MS).	ES2SSN_ShipCall_Req SSN2ES_ShipCall_Res SSN2SEG_Enrichment_Res
StartDateTime	DT		Starting point of a time window declared to define a query	ES2SSN_ShipCall_Req SSN2ES_ShipCall_Res ES2SSN_IncidentReport_Req SSN2ES_IncidentReport_Res
StatusCode	ENUM		Global status code. See "Validation of the XML messages" section for possible values	SSN2ES_Receipt SSN2ES_Ship_Res SSN2ES_ShipCall_Res SSN2ES_IncidentReport_Res SSN2SEG_Exemption_Res
StatusMessage	Text	0-255	Global status message string	SSN2ES_Receipt SSN2ES_Ship_Res SSN2ES_ShipCall_Res SSN2ES_IncidentReport_Res SSN2SEG_Exemption_Res

<i>Attribute name</i>	<i>Type</i>	<i>Len</i>	<i>Description and general rules</i>	<i>Message(s) that the attribute is included</i>
SubsidiaryRisk	Text	1-17	Any risks in addition to the class to which dangerous goods are assigned; and which is determined by a requirement to have a subsidiary risk.	SSN2ES_ShipCall_Res
TextualReference	Text	1-350	This is the proper shipping name, completed with the technical name where appropriate, for goods under IMDG Code, or the product name for goods under IBC Code and IGC Code, or the bulk cargo shipping name for goods under IMSBC Code, or the name of oil for goods under Annex I to the MARPOL Convention.	SSN2ES_ShipCall_Res
TestId	Text	0-8	Test Case identification. Only useful for testing.	ALL messages
TimeoutValue	Int		Timeout value (in seconds) indicating when the request should be considered as expired and must not be processed	ES2SSN_Ship_Req ES2SSN_ShipCall_Req ES2SSN_IncidentReport_Req
Timestamp	DT		Date and time of the ship position reporting.	SSN2ES_Ship_Res
To	Text	7-32	The reference identification of the recipient of the message ('SSN')	All messages
TotalNrOfPackages	Int		This is the total number of packages on all cargo units covered by this cargo item	SSN2ES_ShipCall_Res
TotalPersonsOnBoard	Int		Total number of persons aboard. To be used for notification(s) made along the voyage toward the PortOfCall. 99999 if actually unknown. The value 0 (Zero) is not allowed. Note that the type "INT" prohibits the use of dots and commas	SSN2ES_Ship_Res ES2SSN_IncidentDetail_Not SSN2ES_IncidentReport_Res SSN2SEG_Enrichment_Res

Attribute name	Type	Len	Description and general rules	Message(s) that the attribute is included
TransportDocumentID	Text	1-35	Identifies the Transport document ID, e.g., Bill of Lading, identity code	SSN2ES_ShipCall_Res
TransUnitId	Text	1-17	Identification number of cargo transport unit (if no tanks). For containers, this shall be the identification code as defined in ISO 6346 (limited to goods under IMDG code)	SSN2ES_ShipCall_Res
Type	ENUM		Type of the incident notification among the following possible values: - SITREP - POLREP - Waste - LostFoundContainers - Others - FailedNotification - VTSRulesInfringement - BannedShip - InsuranceFailure - PilotOrPortReport	ES2SSN_IncidentDetail_Not ES2SSN_IncidentReport_Req SSN2ES_IncidentReport_Res SSN2SEG_Enrichment_Res
UnitOfMeasurement	ENUM		Indication of the unit of measurement in which the weight (mas) or volume is expressed. Possible values are: ▪ KGM (kilogram) ▪ TNE (Metric tonne) ▪ M3 (Cubic meter)	SSN2ES_ShipCall_Res
UNNumber	Text	4	UN number of DPG.	SSN2ES_ShipCall_Res
UpdateMSRefId	UUID	1-36	A reference number identifying the MSRefId of the notificationto be updated	ES2SSN_IncidentDetail_Not

Attribute name	Type	Len	Description and general rules	Message(s) that the attribute is included
UpdateStatus	ENUM		<p>Potential values:</p> <ol style="list-style-type: none"> N for a new notification U for an updating notification related to a previous one identified by the UpdateMSRefID attribute. D for deleting a notification. This is to be used to remove notifications that were reported by mistake. This does not actually delete the notification from the SSN database, but invalidates the notification. Note: this value is only allowed for some types of notification. Please refer to business rules. <p>Possible cases: Case: UpdateStatus="N" In this case UdateMSRefId should be omitted Case: UpdateStatus="U" or UpdateStatus="D" In this case UpdateMSRefId=MSRefId of affected msg (s)</p> 	ES2SSN_IncidentDetail_Not
Url	Uri	20-256	Url of the document containing the notification details. If SafeSeaNet receives a request for getting detailed information about this notification, it will use this url to download the document.	ES2SSN_IncidentDetail_Not SSN2ES_IncidentReport_Res
Url	Uri	20-256	<p>Provides a surrogated URL located at central SSN server masking the original URL provided in the PortPlus Notification of the <i>data provider</i>.</p> <p>The <i>data requestor</i> system may utilise this URLto communicate (in 2-way SSL) with the central SSN system and download the document with the Hazmat details.</p>	SSN2ES_ShipCall_Res
ValidISSC	ENUM		Indicates if the ship has a valid International Ship Security Certificate (ISSC). This is a yes (Y) /no (N) data element.	SSN2ES_ShipCall_Res
Version	ENUM		SafeSeaNet request current version ('x.x') Possible values: " 3.0 " or " 4.0 "	ALL messages
Visibility	Text	1-20	Indicates visibility in nautical miles	ES2SSN_IncidentDetail_Not SSN2ES_IncidentReport_Res
WasteCode	ENUM		Waste type code as defined in Annex B In addition, for Exemptions "all waste types" code is "0000"	SSN2ES_ShipCall_Res SSN2SEG_Exemption_Res

<i>Attribute name</i>	<i>Type</i>	<i>Len</i>	<i>Description and general rules</i>	<i>Message(s) that the attribute is included</i>
WasteDeliveryDuePort	Text	5	Location code of the port where waste-delivery was due.	ES2SSN_IncidentDetail_Not SSN2ES_IncidentReport_Res
WasteDeliveryStatus	ENUM		If ship delivers all, some or none of its waste in the port it reports to. Possible values: " All ", " Some " or " None "	SSN2ES_ShipCall_Res SSN2SEG_Enrichment_Res
WasteDescription	Text	1-256	Free text description of waste type.	SSN2ES_ShipCall_Res SSN2SEG_Exemption_Res
WaveHeight	Text	1-20	Indicates the wave height in metres.	ES2SSN_IncidentDetail_Not SSN2ES_IncidentReport_Res
XR_Number	Text	1-14	Vessel registration detail - the side number of the vessel	SSN2SEG_Enrichment_Res SSN2SEG_Exemption_Res